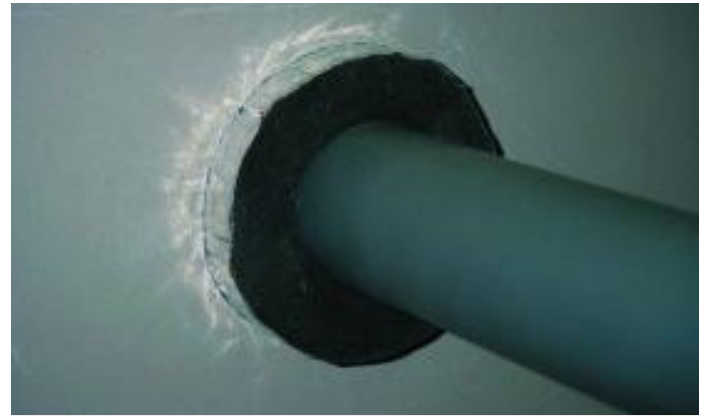


Quelfire QIF Insulated Fire Sleeves prevent the spread of fire through combustible and non-combustible pipes where they penetrate fire compartment walls and floors.



QIF Insulated Fire Sleeves



QIF Insulated Fire Sleeve installed in a wall penetration

FEATURES & BENEFITS

- 🔍 Tested to BSEN 1366-3: 2009
- 🔍 Up to 4 hour fire rating
- 🔍 Suitable for masonry or plasterboard partitions.
- 🔍 Available for 17 - 169mm pipes
- 🔍 Can be retrofitted

COMPOSITION

The QIF Insulated Fire Sleeves consist of a foil containing insulating mineral fibre and graphite intumescent material which reacts under the influence of heat to exert pressure on the pipe as it softens to form a carbonaceous char which provides an effective insulation plug thus preventing smoke and fire passing through to the adjoining compartment.

APPLICATION / INSTALLATION

The QIF Insulated Fire Sleeve should be placed around the pipe, positioned centrally within the partition and should protrude from each face of the wall by 50mm. To retrofit, the sleeve must be cut along its length with a sharp knife put around the pipe and then sealed with the foil tape provided. The plasterboard should be cut to a tight fit around the QIF Insulated Fire Sleeve, and any gaps should be sealed with the QuelStop CE Marked Intumescent Acrylic Sealant.

REGULATIONS

Building Regulations impose limitations on all pipes passing through fire compartment walls and floors. QIF Insulated Fire Sleeves allow pipes to meet the requirements of the Building Regulations. QIF Insulated Fire Sleeves have been tested according to BSEN 1366-3: 2009 where pipe diameters of up to 169mm have met insulation and integrity criteria for this standard for up to four hours.

TECHNICAL SUPPORT & GUIDANCE

Should you require any further information regarding this product, please don't hesitate to contact Quelfire Ltd

PERFORMANCE

Product Code	Pipe Size (mm)	Space needed around pipe to fit QIF (mm)	QIF length (mm)	Fire Rating
QIF17	17Ø	27	300	Up to 4 hours
QIF21	21Ø	27	300	Up to 4 hours
QIF27	27Ø	27	300	Up to 4 hours
QIF34	34Ø	27	300	Up to 4 hours
QIF42	42Ø	27	300	Up to 4 hours
QIF48	48Ø	27	300	Up to 4 hours
QIF54	54Ø	27	300	Up to 4 hours
QIF60	60Ø	27	300	Up to 4 hours
QIF67	67Ø	27	300	Up to 4 hours
QIF76	76Ø	27	300	Up to 4 hours
QIF80	80Ø	27	300	Up to 4 hours
QIF89	89Ø	27	300	Up to 4 hours
QIF102	102Ø	27	300	Up to 4 hours
QIF108	108Ø	27	300	Up to 4 hours
QIF114	114Ø	27	300	Up to 4 hours
QIF127	127Ø	27	300	Up to 4 hours
QIF140	140Ø	27	300	Up to 4 hours
QIF159	159Ø	27	300	Up to 4 hours
QIF169	169Ø	27	300	Up to 4 hours

WARRANTY The Company warrants its products to be free from defects in material and workmanship for a period of 12 months from the date of delivery. The Company's obligation under this warranty is limited, as its option, to the repair or replacement, free of charge, or refund of the net Invoiced price of any part found to be defective, and which, in the Company's opinion, has not been subject to undue wear and tear, accident, alteration, abuse or misuse. Consequent damages are expressly disclaimed. Technical advice from Quelfire whether verbal, in writing or by way of trials, is given in good faith but without warranty. The application, use and installation of the Company's products are beyond the control of the Company, and the purchaser is solely responsible that goods are fit for any particular purpose. In line with the Company's policy of continual research and development, product specifications and availability are subject to change or withdrawal without prior notice.

Quelfire maintain a policy of constant improvement and reserve the right to alter or amend the specifications of their products without notice. Quelfire is a Registered Trademark.