

QuelStop Fire Batt is a coated mineral wool board used to reinstate the fire rating of wall and floor constructions where they have been penetrated by services.



QuelStop Fire Batt



QuelStop Fire Batt used in conjunction with QuelStop Intumescent Acrylic Sealant

FEATURES & BENEFITS

- Up to 2 hour fire rating
- Suitable for use in flexible walls, rigid walls and floors
- Suitable for use around cables, cable bunches, cable trays, cable ladders and non-combustible pipes
- Also suitable for use around plastic pipes and insulated non-combustible pipes with the addition of other Quelfire products
- Can be used as a blank seal as a head of wall detail
- Can be installed into both lined and unlined apertures in partitions walls
- Can be installed as a single or double batt seal
- Can be pattress fitted / face fixed to walls
- Tested with plasterboard ceilings and steel composite profile decks
- Can be used in conjunction with Intufoam to allow for deflection head movement

SIZE

- 1200mm x 600mm, 50mm thick, 140kg/m³ density

STANDARDS & APPROVALS

- Fire resistance testing to BS EN 1366-3
- Classified to EN 13501-2
- Acoustic tested to EN 10140 up to 60dB
- CE Marked



The Warringtonfire Logo displayed is the trademark of Warringtonfire registered in the United Kingdom. The Warringtonfire Logo is evidence that the products denoted as 'Tested by Warringtonfire' were tested to BSEN 1366-3: 2009 in England between 22nd September 2015 and 9th December 2022.



This product is CE Marked.

PACKAGING & STORAGE

QuelStop Fire Batt is supplied as a 1200x600mmx50mm slab, individually wrapped in polythene and is usually shipped on a pallet and must be stored in dry conditions between +5 and +40C.

APPLICATION

QuelStop Fire Batt is used to maintain the fire integrity of compartment walls or floors, typically where oversized holes have been formed for services. A single or double batt may be required depending on a number of factors and it can also be fitted as a pattress fit (or face fit) too.

QuelStop Fire Batt is always installed in conjunction with QuelStop Intumescent Acrylic Sealant which is applied to all cuts, joints and exposed edges.

Where combustible, non-combustible services and insulated services penetrate the QuelStop Fire Batt seal the following additional products may be required:

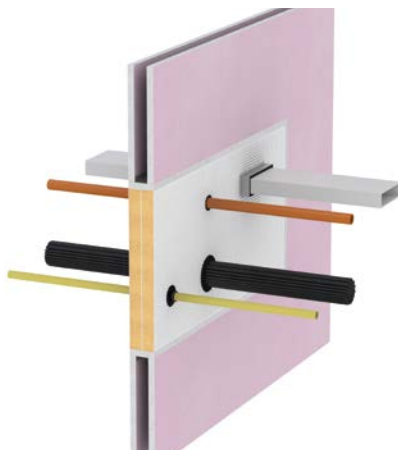
- 🔍 QuelCoil Intuwrap
- 🔍 QWR Fire Collar
- 🔍 QRS Fire Sleeve
- 🔍 QuelStop HPE Graphite Sealant
- 🔍 QuelStop Intumescent Acrylic Sealant
- 🔍 QIF Insulated Fire Sleeve
- 🔍 QI Intufoam

For full details on the size of seals, the spacing of services, batt overlap requirements, seal details etc refer to all available documentation, installation details and the Quelfire Technical team.

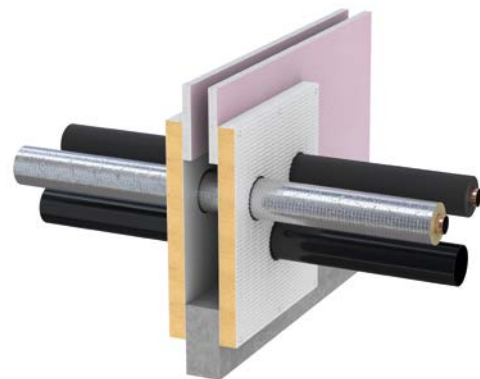
INSTALLATION

QuelStop Fire Batt can be installed in many different ways. In all cases the surfaces, letterbox and services must be clean of contaminants and dust free and the batt must be installed with QuelStop Intumescent Acrylic Sealant and in conjunction with the supporting documentation provided.

To give some idea of the scope of the system, some indicative installation details are:



QuelStop Fire Batt in a letterbox opening with multiple services used in conjunction with other Quelfire products including QuelStop HPE Sealant and QRS Fire Sleeves



QuelStop Fire Batt as a pattress (or face fit) installation used in conjunction with other Quelfire products including QuelCoil Intuwrap to insulated non-combustible pipes



QuelStop Fire Batt used in conjunction with QuelStop Intumescent Sealants



QuelStop Fire Batt in a wall penetration used in conjunction with QuelStop HPE Sealant to services



QuelStop Fire Batt installed as a pattress on a steel profiled deck



QuelStop Fire Batt used in conjunction with Quelfire Intufoam to allow for deflection in a head of wall seal

HEALTH & SAFETY

QuelStop Fire Batt is manufactured from stone wool insulation which consists of small fibres. Appropriate protective clothing, including gloves, dust mask, safety glasses, should be worn, especially during cutting and installation, to guard against dust inhalation, eye and skin irritation. For further information, please refer to the Material Safety Data Sheet, available on request.

Technical Support & Guidance:

Should you require any further information regarding this product, please do not hesitate to contact the technical department at Quelfire Ltd.

Tel: **0161 928 7308**. Email: technical@quelfire.co.uk

Please be aware that this document is intended for general information only and all details should be checked against all relevant supporting test evidence, certification and installation guidelines.

Use of alternative components or deviations from the instructions in any way is likely to mean that the installation will not comply with the assessed rating.

Quelfire Ltd does not accept responsibility for the consequences of using Quelfire products in applications or for purposes not authorised by Quelfire Ltd. Expert advice should be sought where such applications are contemplated.

The policy of Quelfire Ltd is one of constant improvement. Details are subject to change and/or withdrawal without notification therefore you must ensure this is the latest published documentation. Whilst Quelfire will endeavour to keep its publications up to date, the accuracy of the information contained within this document may be affected by pertinent changes in the law or regulatory requirements and alterations or amendments to the specification of Quelfire products.

All information contained in this document is given in good faith and is provided for guidance only. Any drawings provided are for illustrative purposes only. As Quelfire Ltd has no control over the methods or competence of installation and of prevailing site conditions, no warranties, expressed or implied, is intended to be given as to the actual performance of the product mentioned or referred to herein and no liability whatsoever will be accepted for any loss, damage or injury arising from the use of the information given. Full terms and conditions can be accessed at: <https://quelfire.co.uk/terms-conditions-of-sale/>