

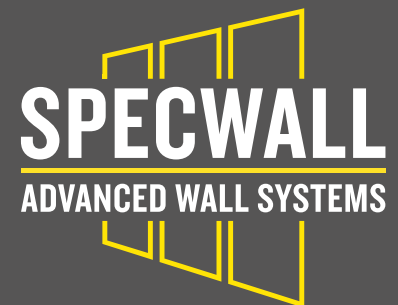
QuelStop Fire Stop System INSTALLATION INSTRUCTIONS for Specwall

This installation guide is intended for general information only and all details should be checked against relevant supporting test evidence and certification.



Specwall is an alternative wall system to traditional brick/block and fire resistant stud partition systems and as such requires specific attention when breached with apertures and service penetrations.

This installation guide is ONLY applicable to installation of the following details:



QuelStop Fire Batt details:

| | |
|---|---|
| <u>QB-SP75-P-00</u> | <u>Pattress QuelStop Fire Batt to Blank Seal</u> |
| <u>QB-SP75-P-02</u> | <u>Pattress QuelStop Fire Batt to Cable penetration (HPE)</u> |
| <u>QB-SP75-P-04</u> | <u>Pattress QuelStop Fire Batt to Insulated Metal Pipe (QuelCoil)</u> |
| <u>QB-SP75-P-05</u> | <u>Pattress QuelStop Fire Batt to CPVC Sprinkler Pipe (HPE)</u> |
| <u>QB-SP75-P-06</u> | <u>Pattress QuelStop Fire Batt to Plastic Pipe (QuelCoil)</u> |
| <u>QB-SP75-P-07</u> | <u>Pattress QuelStop Fire Batt to Plastic Pipe (QWR Fire Collar)</u> |
| <u>QB-SP75-P-10</u> | <u>Pattress QuelStop Fire Batt to Metal Pipes (QSS)</u> |
| <u>QB-SP75-P-HOW-04</u> | <u>Pattress QuelStop Fire Batt to Head Of Wall with Intufoam</u> |

QuelStop Intumescent Acrylic Sealant details:

| | |
|------------------------------------|---|
| <u>QSS-SP75-00</u> | <u>Direct to wall, QuelStop Intumescent Acrylic Sealant to blank seal</u> |
| <u>QSS-SP75-01</u> | <u>Direct to wall, QuelStop Intumescent Acrylic Sealant to cable/s</u> |
| <u>QSS-SP75-02</u> | <u>Direct to wall, QuelStop Intumescent Acrylic Sealant to metal pipe</u> |

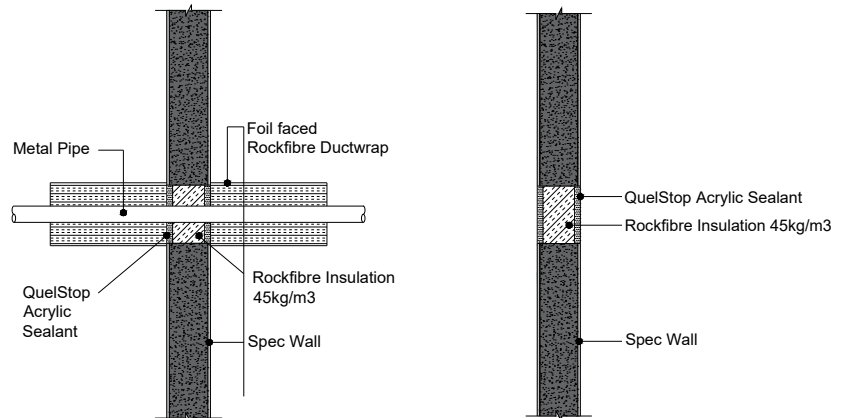
Quelfire Putty Pad detail:

| | |
|-----------------------------------|---|
| <u>PP-SP75-01</u> | <u>Putty Pad to electric socket boxes</u> |
|-----------------------------------|---|

DIRECT TO WALL SEALS USING QUELSTOP INTUMESCENT ACRYLIC SEALANT

Penetrations not exceeding 100mm x 100mm can potentially be sealed with a direct to wall seal using QuelStop Intumescent Acrylic Sealant applied to a rock fibre backing material.

Refer to the QSS-SP75 series of details.



Typical Installation Details

1. Check that the aperture size does not exceed 100x100mm and that any services penetrating the aperture are within specification as noted on the standard details.
2. Make sure that the area within the aperture is clean of any debris and remove any dust and contaminants from all edges.
3. Rock fibre insulation with a minimum density of 45kg/m³ should be packed into the aperture to the full depth of the wall ensuring that it is set back 10mm from the face on both sides of the wall as a backing material.
4. QuelStop Intumescent Acrylic Sealant should then be gun applied to the face of the rock fibre insulation and smoothed out with a spatula to a consistent depth of 10mm across the face of the backing material so that is flush with the face of the wall.
5. Repeat on the other side of the wall.

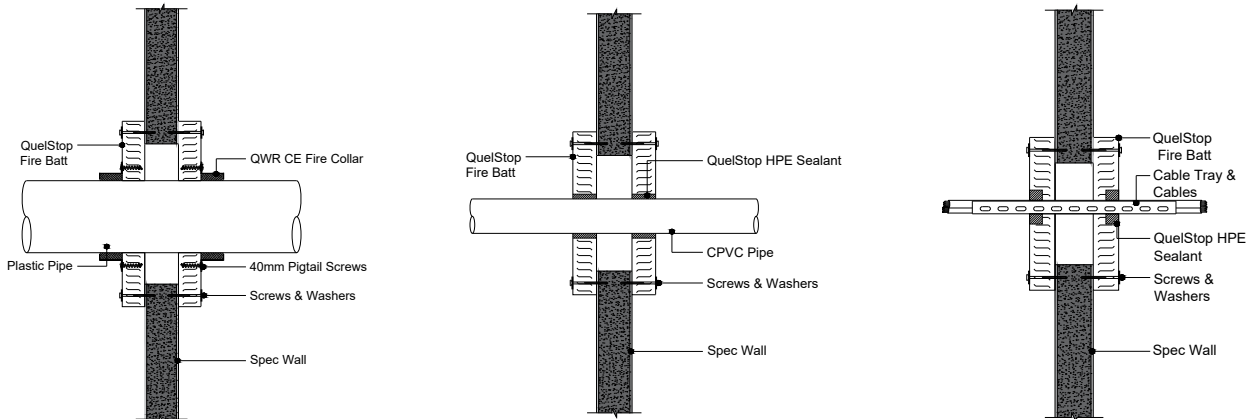
QuelStop Fire Stop System INSTALLATION INSTRUCTIONS for Specwall

DOUBLE QUELSTOP FIRE BATT SEALS

Penetrations of up to 600mm x 600mm can potentially be sealed with a pattrass fitted QuelStop Fire Batt Seal.

Refer to the QB-SP75 series of details.

Typical Installation Details



1. Check that the aperture size does not exceed 600x600mm and that any services penetrating the aperture are within specification as noted on the standard details.
2. Cut the QuelStop Fire Batt to the size and shape required to pattrass fit the aperture, ensuring the QuelStop Fire Batt will overlap the aperture on all sides by at least 50mm on all sides.
3. Cut holes in the QuelStop Fire Batt to accommodate the penetrating services. (Follow the relevant guidance suitable for the type and size of service)
4. Cut the QuelStop Fire Batt across its width at the midpoint of each hole to allow the QuelStop Fire Batt to be fitted around the services.
5. Apply QuelStop Intumescent Acrylic Sealant to all cuts and joints of the QuelStop Fire Batt including the service penetration hole - unless QuelStop HPE Sealant is required. (Follow the relevant guidance suitable for the type and size of service)
Use a spatula to smooth the QuelStop Intumescent Acrylic Sealant evenly to cover over the entire thickness of the QuelStop Fire Batt.
6. Apply a bead of QuelStop Intumescent Acoustic Sealant to the face of the wall around the opening of the aperture where the batt is to overlap.
7. Place the sections of the QuelStop Fire Batt onto the wall around the services. The QuelStop Fire Batt must be fixed to the wall at maximum 300mm centres and in the corner of each seal using the following:
 - 80mm steel screws
 - 25mm diameter steel washers
8. Ensuring the fixing is positioned in the centre of the overlap of the batt.
9. Follow the relevant guidance for the correct Quelfire Sealant or closure device depending on the type and size of the services penetrating the QuelStop Fire Batt.
10. Apply QuelStop Ablative Coating to repair any damage to the coating on the QuelStop Fire Batt that may have occurred during installation.
11. Apply QuelStop Intumescent Acrylic Sealant or Ablative Coating to the face of the screws and washers.
12. Repeat sections 2 – 11 for a second layer of QuelStop Fire Batt on the other side of the wall.



QuelStop Fire Stop System INSTALLATION INSTRUCTIONS for Specwall

ELECTRIC SOCKET BOXES USING QUELFIRE INTUMESCENT ACOUSTIC PUTTY PAD

Electric socket boxes set into Specwall can be sealed with the Quelfire Intumescent Acoustic Putty Pad.

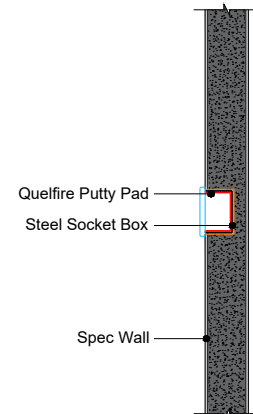
Refer specifically to detail PP-SP75-01.

Typical Installation Details

1. Check that the aperture in the Specwall is cut as tight as possible to suit the metal electric socket box and any gaps do not exceed 3mm around the box.
2. Apply QuelStop Intumescent Acrylic Sealant to seal the gap between the Specwall and the metal socket box ensuring it is flush with the face of the Specwall.

The following installation principles apply to all Putty Pad installation so refer also to the [Quelfire Putty Pad Installation Guide](#) for a step by step pictorial guide.

3. Ensure that all surfaces are free from dust, dirt, grease and contamination.
4. Select the appropriate Quelfire Intumescent Acoustic Putty Pad to suit the socket size:
 - PUTPAD-S Single Socket
 - PUTPAD-D Double Socket
5. Remove the Putty Pad from the paper backing and insert into the socket box
6. A cut or slot can be made for the cables.
7. Ensure the Putty Pad completely covers the back and sides of the socket box right up to the front face of the wall.
8. Ensure the Putty Pad is firmly pressed into the whole box and mould the putty back around the cable penetration ensuring that the original 3mm thickness is maintained at all times.
9. Trim any excess material off and ensure the putty is sealed along the front edge.
10. Finally, clear the screw holes and fit the cover plate as required.



Technical Support & Guidance:

Should you require any further information regarding this product, please do not hesitate to contact the technical department at Quelfire Ltd.

Tel: 0161 928 7308. Email: technical@quelfire.co.uk

Please be aware that this document is intended for general information only and all details should be checked against all relevant supporting test evidence, certification and installation guidelines.

Use of alternative components or deviations from the instructions in any way is likely to mean that the installation will not comply with the assessed rating.

Quelfire Ltd does not accept responsibility for the consequences of using Quelfire products in applications or for purposes not authorised by Quelfire Ltd. Expert advice should be sought where such applications are contemplated.

The policy of Quelfire Ltd is one of constant improvement. Details are subject to change and/or withdrawal without notification therefore you must ensure this is the latest published documentation. Whilst Quelfire will endeavour to keep its publications up to date, the accuracy of the information contained within this document may be affected by pertinent changes in the law or regulatory requirements and alterations or amendments to the specification of Quelfire products.

All information contained in this document is given in good faith and is provided for guidance only. Any drawings provided are for illustrative purposes only. As Quelfire Ltd has no control over the methods or competence of installation and of prevailing site conditions, no warranties, expressed or implied, is intended to be given as to the actual performance of the product mentioned or referred to herein and no liability whatsoever will be accepted for any loss, damage or injury arising from the use of the information given. Full terms and conditions can be accessed at: <https://quelfire.co.uk/terms-conditions-of-sale/>