

QuelStop Fire Batt INSTALLATION INSTRUCTIONS for single sided access only

This installation guide is intended for general information only and all details should be checked against relevant supporting test evidence and certification.



Installation from one side of the wall only is only to be considered where no other options are available.

If access to both sides is available then the relevant details should be considered as installation from one side of the wall only is not good practice and does have an adverse effect on performance.

This installation guide is ONLY applicable to installation of the following details:

[QB-FW100-D-SS-02](#)

[QB-FW100-D-SS-04](#)

[QB-FW100-D-SS-05](#)

[QB-FW100-D-SS-06](#)

[QB-FW100-D-SS-12](#)

[QB-FW100-D-SS-14](#)

SINGLE SIDED ACCESS ONLY: DOUBLE QUELSTOP FIRE BATT

1. Make sure that the area within the aperture is clean of any debris and remove dust from all edges.
2. Cut QuelStop Fire Batt to the size and shape required to fit the aperture, ensuring the QuelStop Fire Batt will have a tight fit within all the edges of the aperture.
3. Cut holes in the QuelStop Fire Batt to accommodate the penetrating services. (Follow the relevant guidance suitable for the type and size of service.)
4. Cut the QuelStop Fire Batt across its width at the midpoint of each hole to allow the QuelStop Fire Batt to be fitted into the aperture around the services.
5. Where QuelCoil Intuwrap is required around the services then wrap the correct number of layers around the services and seal with the self-adhesive tape ensuring that the seal is in line with the proposed batt position.
6. Liberally apply QuelStop Intumescent Acrylic Sealant around the perimeter, in the centre of the aperture, where the batt is to be installed.
7. Liberally apply QuelStop Intumescent Acrylic Sealant to all edges, cuts and joints of the QuelStop Fire Batt. This includes the service penetration hole, unless QuelStop HPE Sealant is required. (Follow the relevant guidance suitable for the type and size of service.)

Use a spatula to smooth the QuelStop Intumescent Acrylic Sealant evenly to cover over the entire thickness of the QuelStop Fire Batt.

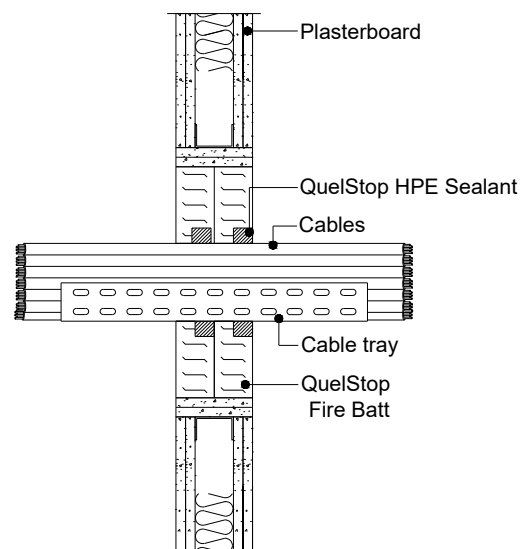
Liberal application of QuelStop Intumescent Sealant is required – the intention being that excessive material will squeeze out on the inaccessible side filling all gaps as shown indicatively in the image on the right.



Example Single Side Access Batt Installation as viewed from the non-accessible side showing liberal amounts of sealant.

QuelStop Fire Batt INSTALLATION INSTRUCTIONS for single sided access only

8. Insert the first section of the QuelStop Fire Batt into the aperture around the services.
9. Apply a bead of QuelStop Intumescent Acrylic Sealant to all joints and the perimeter of the seal ensuring all gaps are fully filled and sealed. Use a spatula to smooth off.
10. Where a QuelStop HPE Sealant seal is required then this should be now applied into the first batt seal observing the depth and annulus requirements of the specific details.
11. Repeat sections 1 – 7 for the second layer of QuelStop Fire Batt.
12. Insert the second layer of QuelStop Fire Batt.
13. Apply QuelStop Intumescent Acrylic Sealant to the perimeter seal and to any joints. Use a spatula to smooth the seal.
14. Apply QuelStop Ablative Coating to repair any damage to the QuelStop Fire Batt coating that may have occurred during installation.



Example QuelStop Batt and HPE Sealant Detail

PLEASE NOTE THAT ONLY THE FOLLOWING DETAILS SHOULD BE INSTALLED USING THIS METHOD:

[QB-FW100-D-SS-02](#)

[QB-FW100-D-SS-04](#)

[QB-FW100-D-SS-05](#)

[QB-FW100-D-SS-06](#)

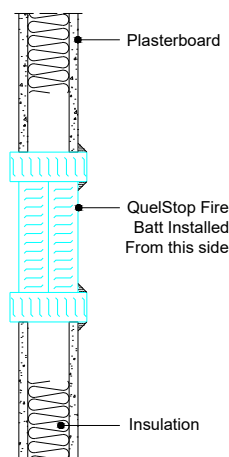
[QB-FW100-D-SS-12](#)

[QB-FW100-D-SS-14](#)

THIS METHOD DOES NOT APPLY TO ALL QUELFIRE DOUBLE BATT DETAILS WHICH SHOULD NORMALLY BE INSTALLED WITH ACCESS AVAILABLE TO BOTH SIDES OF THE WALL.

Note: These details are based on a framed and lined aperture, where this is not possible to achieve then Quelfire Standard Installation Detail [QB-FW100-D-00C](#) should be considered noting the limitations on size and fire rating.

This details involves the use of QuelStop Fire Batt and QuelStop Intumescent Acrylic Sealant to frame and line the aperture (as opposed to the wall system stud and fire rated board) and this can be installed from one side of the wall too.



Technical Support & Guidance:

Should you require any further information regarding this product, please do not hesitate to contact the technical department at Quelfire Ltd.

Tel: **0161 928 7308**. Email: technical@quelfire.co.uk

Please be aware that this document is intended for general information only and all details should be checked against all relevant supporting test evidence, certification and installation guidelines.

Use of alternative components or deviations from the instructions in any way is likely to mean that the installation will not comply with the assessed rating.

Quelfire Ltd does not accept responsibility for the consequences of using Quelfire products in applications or for purposes not authorised by Quelfire Ltd. Expert advice should be sought where such applications are contemplated.

The policy of Quelfire Ltd is one of constant improvement. Details are subject to change and/or withdrawal without notification therefore you must ensure this is the latest published documentation. Whilst Quelfire will endeavour to keep its publications up to date, the accuracy of the information contained within this document may be affected by pertinent changes in the law or regulatory requirements and alterations or amendments to the specification of Quelfire products.

All information contained in this document is given in good faith and is provided for guidance only. Any drawings provided are for illustrative purposes only. As Quelfire Ltd has no control over the methods or competence of installation and of prevailing site conditions, no warranties, expressed or implied, is intended to be given as to the actual performance of the product mentioned or referred to herein and no liability whatsoever will be accepted for any loss, damage or injury arising from the use of the information given. Full terms and conditions can be accessed at: <https://quelfire.co.uk/terms-conditions-of-sale/>