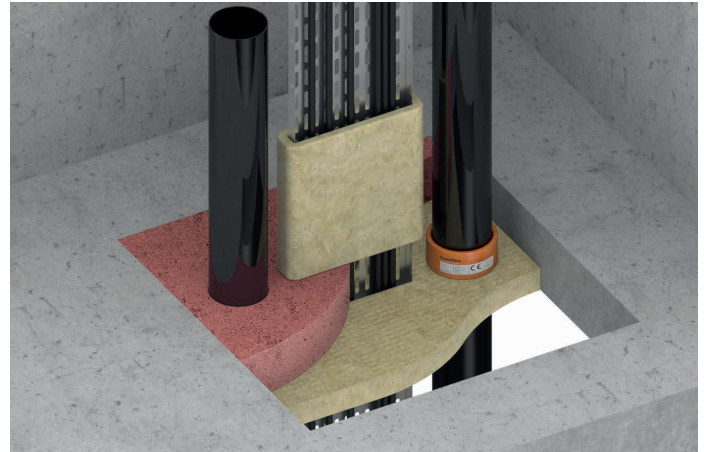


Quelfire MW Mineral Wool Shuttering Slab provides a simple means of shuttering to Quelfire Fire Protection Compounds.



MW Mineral Wool Shuttering Slab



Indicative cross section detail of MW Mineral Wool Shuttering Slab used in conjunction with QF2 Fire Protection Compound

FEATURES & BENEFITS

- 🔧 An easy to install shuttering system for the fire protection compounds
- 📏 1200 x 600 x 50mm slabs
- 🔪 Easily cut with a knife or saw
- 🔧 Allows friction fitting into penetrations

COMPOSITION

Quelfire MW Mineral Wool Shuttering Slab is a non-combustible mineral wool batt which will provide increased fire resistance when used as a shutter for fire protection compounds. It is easy to cut facilitating installation around services and is used as a fire resistant permanent or temporary shuttering to all types of fire protection compound.

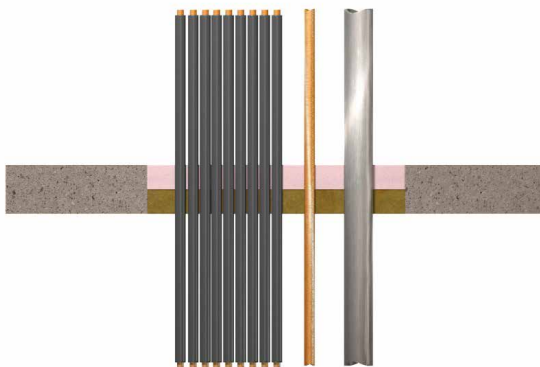
APPLICATION / INSTALLATION

Solid floor penetrations:

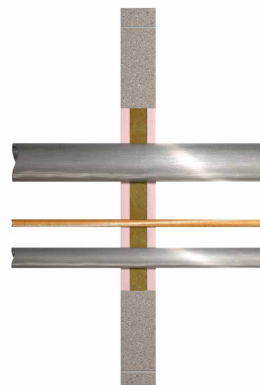
Quelfire MW Shuttering Slab should be cut to suit the penetration slightly oversize and around all penetrating services so when installed it will be a good friction fit. The MW Slab should be positioned towards the bottom of the hole so that the correct depth of Fire Protection Compound can be installed on top – normally a minimum of 100mm but this should be checked in accordance with the test evidence and recommendations. Consideration should be given to any necessary temporary or permanent support that may be required. Once secure any necessary closure devices such as wraps may be installed around the services and the Fire Protection Compound poured on top of the MW Shuttering Slab. Once the Fire Protection Compound has cured, the shuttering slab may be removed or cut back so that the fire seal is visible.

Solid wall penetrations:

Quelfire MW Shuttering Slab should be cut to suit the penetration, slightly oversize and around all penetrating services so when installed it will be a good friction fit. The MW Slab should be positioned in such a way that the correct depth of Fire Protection Compound can be installed within the overall seal, in accordance with the test evidence for the Fire Protection Compound, this may be to both sides of the shutter, or to one side only. Once the shutter is complete and secure, any necessary closure devices such as wraps may be installed around the services and the Fire Protection Compound rendered to the MW Shuttering Slab.



Floor cross section of MW Mineral Wool Shuttering Slab used in conjunction with QF2 Fire Protection Compound



Wall cross section of MW Mineral Wool Shuttering Slab used in conjunction with a Fire Protection Compound

Technical Support & Guidance:

Should you require any further information regarding this product, please do not hesitate to contact the technical department at Quelfire Ltd.

Tel: **0161 928 7308**. Email: technical@quelfire.co.uk

Please be aware that this document is intended for general information only and all details should be checked against all relevant supporting test evidence, certification and installation guidelines.

Use of alternative components or deviations from the instructions in any way is likely to mean that the installation will not comply with the assessed rating.

Quelfire Ltd does not accept responsibility for the consequences of using Quelfire products in applications or for purposes not authorised by Quelfire Ltd. Expert advice should be sought where such applications are contemplated.

The policy of Quelfire Ltd is one of constant improvement. Details are subject to change and/or withdrawal without notification therefore you must ensure this is the latest published documentation. Whilst Quelfire will endeavour to keep its publications up to date, the accuracy of the information contained within this document may be affected by pertinent changes in the law or regulatory requirements and alterations or amendments to the specification of Quelfire products.

All information contained in this document is given in good faith and is provided for guidance only. Any drawings provided are for illustrative purposes only. As Quelfire Ltd has no control over the methods or competence of installation and of prevailing site conditions, no warranties, expressed or implied, is intended to be given as to the actual performance of the product mentioned or referred to herein and no liability whatsoever will be accepted for any loss, damage or injury arising from the use of the information given. Full terms and conditions can be accessed at: <https://quelfire.co.uk/terms-conditions-of-sale/>