



# QuelSelector

---

Standard Installation Detail  
Selector Tool

V4

# Contents

• <a href="#">What's new, Website, How-To-Use and Info</a>	<a href="#">Pages 3-5</a>	
• <a href="#">WALL SUBSTRATES</a>	<a href="#">Page 6</a>	
• <a href="#">Single Skin Wall</a>	<a href="#">Pages 7-10</a>	
• <a href="#">Double Skin Wall</a>	<a href="#">Pages 11-16</a>	
• <a href="#">Partial Penetrations</a>	<a href="#">Page 17</a>	
• <a href="#">Whitewall (Euroclad)</a>	<a href="#">Pages 18-23</a>	
• <a href="#">Rigid Wall</a>	<a href="#">Pages 24-25</a>	
• <a href="#">Porotherm Wall</a>	<a href="#">Page 26</a>	
• <a href="#">Specwall</a>	<a href="#">Page 27</a>	
• <a href="#">Shaftwall</a>	<a href="#">Page 28</a>	
• <a href="#">Single Side Access Only</a>	<a href="#">Page 29</a>	
• <a href="#">FLOOR SUBSTRATES</a>	<a href="#">Page 30</a>	
• <a href="#">QuelCast Cast In Fire Collar</a>	<a href="#">Page 31</a>	
• <a href="#">Concrete Floor</a>	<a href="#">Pages 32-36</a>	
• <a href="#">Raised Access Floor</a>	<a href="#">Page 37</a>	
• <a href="#">Hollow Core Concrete Slab</a>	<a href="#">Pages 38-41</a>	
• <a href="#">Steel Profile Deck</a>	<a href="#">Pages 42-45</a>	
• <a href="#">Plasterboard ceiling/timber floor</a>	<a href="#">Pages 46-47</a>	
• <a href="#">OTHER TYPES OF SEAL</a>	<a href="#">Page 48</a>	
• <a href="#">Head Of Wall Batt details</a>	<a href="#">Page 49</a>	
• <a href="#">Head of Wall – Linear Joint Seals</a>	<a href="#">Page 50</a>	
• <a href="#">Linear Joint Seals in Walls</a>	<a href="#">Page 51</a>	
• <a href="#">Linear Joint Seals – Door Frames</a>	<a href="#">Page 52</a>	
• <a href="#">Linear Joint Seals in Floors</a>	<a href="#">Page 53</a>	
• <a href="#">Linear Joint Seals – Intufoam</a>	<a href="#">Page 54</a>	
• <a href="#">Electrical Socket Boxes – Putty Pads</a>	<a href="#">Page 55</a>	
• <a href="#">OTHER USEFUL RESOURCES</a>	<a href="#">Page 56</a>	
• <a href="#">Installation Guides</a>	<a href="#">Page 57</a>	
• <a href="#">Website Resources</a>	<a href="#">Page 58</a>	
• <a href="#">Whitepaper Download</a>	<a href="#">Page 59</a>	
• <a href="#">Technical Support Contact Details</a>	<a href="#">Page 60</a>	

# What's new in QuelSelector V4?

Since its launch, the QuelSelector has become a very popular but also important tool, for identifying suitable tested standard detail solutions.

Version 4 (V4) is now bigger and better than ever before with many new details and based on feedback from our valued customers and clients we have also made some small modifications to layout and content in order to improve the user experience and accommodate the increase in number of tested details now available.

We have also responded to feedback from our users by providing this page with an overview of the updates and changes in QuelSelector V4. So, here is an overview of what you can expect to find:

- New title pages allow you to shortcut the navigation to the relevant section based on an image.
- Links to [Knowledge Hub FAQ's](#), for instance regarding [CPVC compatibility considerations](#) at strategic locations throughout.
- The first page for each substrate is generally for "Blank Seals" and "Head of Wall" seals.
- Where possible each service category is now on its own page – eg "Metal Pipes" are separate to "Plastic Pipes".
- There has been a slight reordering of some of the pages to create a more logical flow

More specifically you will find:

- Single Skin Wall – additional conduit and partial penetration details.
- Double Skin Wall – additional detail [QB-FW100-D-29](#) for Python Pipes.
- Partial Penetrations – a significant number of new "Direct Seal" details.
- Rigid Walls – Added details for 100mm thick walls.
- Concrete Floor – QF2 Fire Protection Compound "Blank Seal" details and many new pattress installed QF2 details added.
- Concrete Floor – Detail [QF2-CF150-17](#) for conduits, [QF2-CF150-25](#) for insulated pipes and cable (AC basket) and Detail [QF2-CF150-29](#) for Python Pipes added.
- Hollow Core Slab – Detail [QF2-HC150-35](#) for Busbar and Detail [QF2-HC150-27](#) for large diameter plastic pipes added.
- Steel Profiled Deck - Many new pattress QF2 details added, plus many new solutions for:
  - electrical containment, trunking and busbar
  - insulated and uninsulated metal pipes
  - plastic pipes including large diameter, MLC and CPVC
- Linear Joint Seals – New solutions in particular, for 100mm thick walls added.
- Useful Resources – A link to download our popular [Whitepaper on Early Engagement](#) [#BecauseItsYourJobToKnow](#)

# Website Information

All standard installation details are also available to download from our website:

[www.quelfire.co.uk/standard-installation-details](http://www.quelfire.co.uk/standard-installation-details)

Drop down selectors are available to help identify the most appropriate detail.

However, this **QuelSelector** tool is provided as a handy guide with links to the relevant details.

Each detail has its own unique URL which is hyperlinked in this document and we encourage you to use these details and links in your own documentation to ensure you are always accessing the most current information.

All standard installation details are based on actual test evidence which is referenced on each detail.

Service Penetration Type	Direct Seal	Letterbox Batt	Patress Batt
Uninsulated Metal Pipe	QSS-FW100-03	QB-FW100-D-23	QB-FW100-P-23
	QSS-FW120-01	QB-FW100-D-10	
	QSS-FW100-02		
	QSS-FW120-02		
Insulated Metal Pipe	HPE-FW100-01		QB-FW100-P-04
	HPE-FW100-02		QB-FW100-P-10
	QIF-FW100-01		QB-FW100-P-11
			QB-FW100-P-23
Sleeved Gas Pipe		Inspect	QB-FW100-P-12

Once you have identified the most appropriate detail then hover over cell and click on the detail reference.

We suggest you right click and “Open link in new tab” for the best user experience.

Click on the video below to see what the QuelSelector is all about!



Depending on your system security settings you may need to confirm that you wish to continue.

The Quelfire Technical Team are always available to assist with any questions.



# Important Information



- Quelfire Standard Installation Details are intended for general information only and should be checked against all relevant supporting test evidence, certification and installation guidelines.
- In line with the company's policy of continual development, these details are subject to change and/or withdrawal therefore you must ensure that you have the latest published detail and instructions.
- You can do this by checking online at [www.quelfire.co.uk](http://www.quelfire.co.uk) or by contacting our Technical Team through the website, by emailing [technical@quelfire.co.uk](mailto:technical@quelfire.co.uk), or by calling 0161 928 7308.
- Read full Terms & Conditions here: <https://quelfire.co.uk/terms-conditions-of-sale/>

**QB-FW75-P-02**

**Cable Penetrating a flexible or rigid wall (75mm or thicker)**

This standard detail is intended for general information only and all details should be checked against all relevant supporting test evidence, certification and installation guidelines. In line with the company's policy of continual development, details are subject to change and/or withdrawal therefore you must ensure this is the latest published detail and instructions.

**Additional Information:**

Flexible walls can be insulated or uninsulated and must have a minimum 10mm wide stud and a minimum 1 layer of 12.5mm fire rated plasterboard on both sides of the stud.

Overlap of Quelfire Fire Batt to substrate should be a 100mm on top and sides and 200mm on the bottom.

Quelfire Fire Batt installed in horizontal rows and fixed in a minimum of 2 vertical edges.

All edges, cuts and joints of the Quelfire Fire Batt tightly sealed and "bushered" sealed with Quelfire HPE Acrylic Sealant across the entire thickness of the Quelfire Fire Batt.

All exposed mineral wool edges, screw heads and washers should be "bushered" with a layer of Quelfire Acrylic Sealant or coated with Quelfire Abrasive Coating.

The total amount of cross section area of the services (including insulation) should not exceed 60% of the service penetration area.

Test results obtained with flexible supporting walls may be applied to concrete or masonry elements of an overall thickness equal to or greater than that of the element used in the test.

**Service Type**

Service Type	Size of Service	Quelfire HPE Sealant (insulated both sides)	Classification
Cable	<25mm		
Cable Bundle	<100mm Bundles cables <121mm		E1 60
Cable bundle	<100mm wide	20mm annulus	
Cable bundle fitted with <12mm cables	<100mm high	20mm annulus	E 60
Perforated Cable Tray fitted with services within this table	<100mm wide	E1 20	
Steel or Copper Conduit	<100mm	E 60 C/A	
Plastic Conduit	<100mm	E1 60 C/A	

**Important Information:**

- The supporting construction must be installed in accordance with the manufacturer's guidelines and must be capable of achieving the required fire rating of the Penetration.
- All services should be adequately supported either side of the Penetration to ensure that no load is transferred onto the Penetration.

**Notes and comments:**

- Any information provided by or on behalf of Quelfire Limited is provided for general information only. It is not intended to amount to advice on which you should rely. You must obtain professional or specialist advice before taking, or refraining from, any action in relation to the matters covered by this document. No liability is accepted by Quelfire Limited for any loss or damage caused by reliance on the information provided in this document.
- This document is not a contract and does not constitute an offer. It is intended to provide information and does not constitute an offer. No liability is accepted by Quelfire Limited for any loss or damage caused by reliance on the information provided in this document.
- Quelfire Limited does not accept any liability for any loss or damage caused by reliance on the information provided in this document, whether or not such loss or damage is foreseeable or preventable. No liability is accepted by Quelfire Limited for any loss or damage caused by reliance on the information provided in this document.
- Quelfire Limited does not accept any liability for any loss or damage caused by reliance on the information provided in this document, whether or not such loss or damage is foreseeable or preventable. No liability is accepted by Quelfire Limited for any loss or damage caused by reliance on the information provided in this document.

**Quelfire**

PROTECTING PEOPLE & PROPERTY

Product Code	Description
QB-FW	Quelfire Fire Batt
QHPF310	Quelfire HPE Graphite Sealant
QHS310	Quelfire Intumescent Acrylic Sealant
QCS310	Quelfire Abrasive Coating

**Quelfire Fire Batt Fitting Instructions:**

Quelfire Fire Batt should be used using Quelfire Acrylic Sealant and mechanically fixed to the substrate with minimum 6mm x 80mm steel wood screws and 20mm diameter steel retaining washers for flexible partitions or 6mm x 100mm countersunk concrete screws with 20mm steel retaining washers for rigid walls. Fixings installed in the centre of the overlap at maximum 300mm centres and in every corner of the batt seal.

Multiple Service Penetration Spacing	
Distances are from edge of the wall only	
Minimum distance from edge of opening	60mm
Minimum distance between services within the table below	50mm
Minimum distance between other service types	50mm

**To be read in conjunction with:**

Test Standard	BS 476: Part 7: 2002 & BS 476: Part 8: 2002
Substrate minimum thickness	75mm
Fire Service Support	<400mm
Maximum Aperture	800mm wide x 100mm high
Drainage	Not to scale
Scale	1:20
Date of issue	October 2021
Control Reference	QB-FW75-P-02

## Standard Installation Detail References are generally made up of 5 parts:

1. Primary Product code (QB = Quelfire Fire Batt, HPE = HPE Sealant, QWR = QWR Fire Collar etc) Where there are multiple products used, the primary product is used for reference eg. HPE Sealant used with Fire Batt is a QB batt detail.
2. Substrate construction (CF = Concrete Floor, PC = Plasterboard Ceiling, RW = Rigid Wall and FW = Flexible Wall)  
*Please note that Flexible Wall details also cover Rigid Wall applications.*
3. Substrate construction minimum thickness (75 = minimum 75mm thick, 150 = minimum 150mm thick etc.) These are minimum thicknesses so are generally suitable for thicker constructions.
4. Batt application where applicable (S = Single Batt, D = Double Batt and P = Pattress fitted, also known as a face fix.)
5. Unique reference – the last part of the reference is a unique 2 digit reference number.

For example: QB-FW100-P-09 = Batt Seal | Flexible Wall | Min 100mm thick | Pattress fitted Batt | Ref 09.

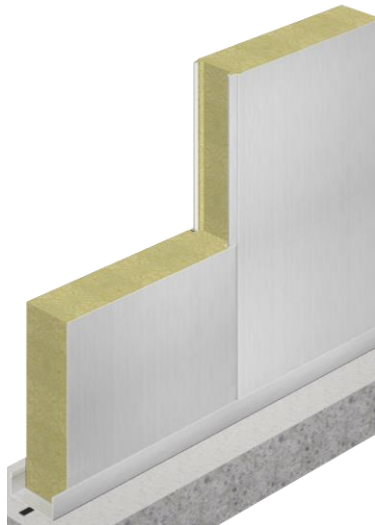


# WALL SUBSTRATES



Flexible Wall Systems:

- Single Skin • 100mm
- Double Skin • 150mm



Whitewall (Euroclad):



Rigid Concrete Walls

- In-situ
- Blockwork



Specialist Wall Systems:

- Porothersm
- Specwall



Shaftwall Systems:

- Batt System
- Single Side



Single Side Access:

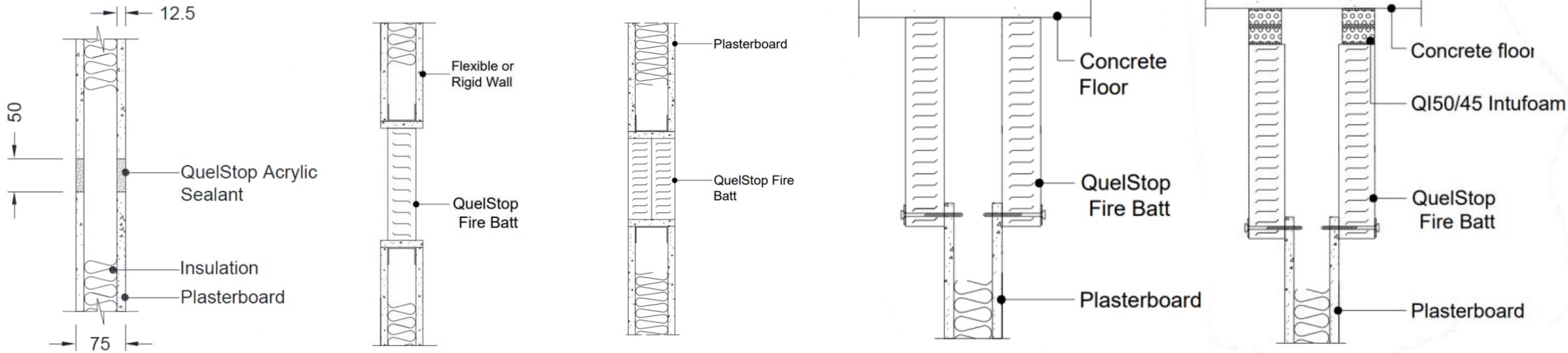
- Batt System
- Sealants

*Click on the relevant image above to go straight to the relevant section of standard details.*

# Single Skin Wall – Blank Seal & HoW

Penetration Type	Direct Seal	Letterbox Batt	Pattress Batt
N/A – Blank Seal	<a href="#">QSS-FW75-00</a>	<a href="#">QB-FW75-S-00</a>	<a href="#">QB-FW75-P-00</a>
		<a href="#">QB-FW100-D-00B</a>	
N/A – Blank Seal – Batt lining		<a href="#">QB-FW100-D-00C</a>	
Head of Wall (HoW)			<a href="#">QB-FW75-P-HOW-01</a>
HoW with Intufoam			<a href="#">QB-FW75-P-HOW-04</a>

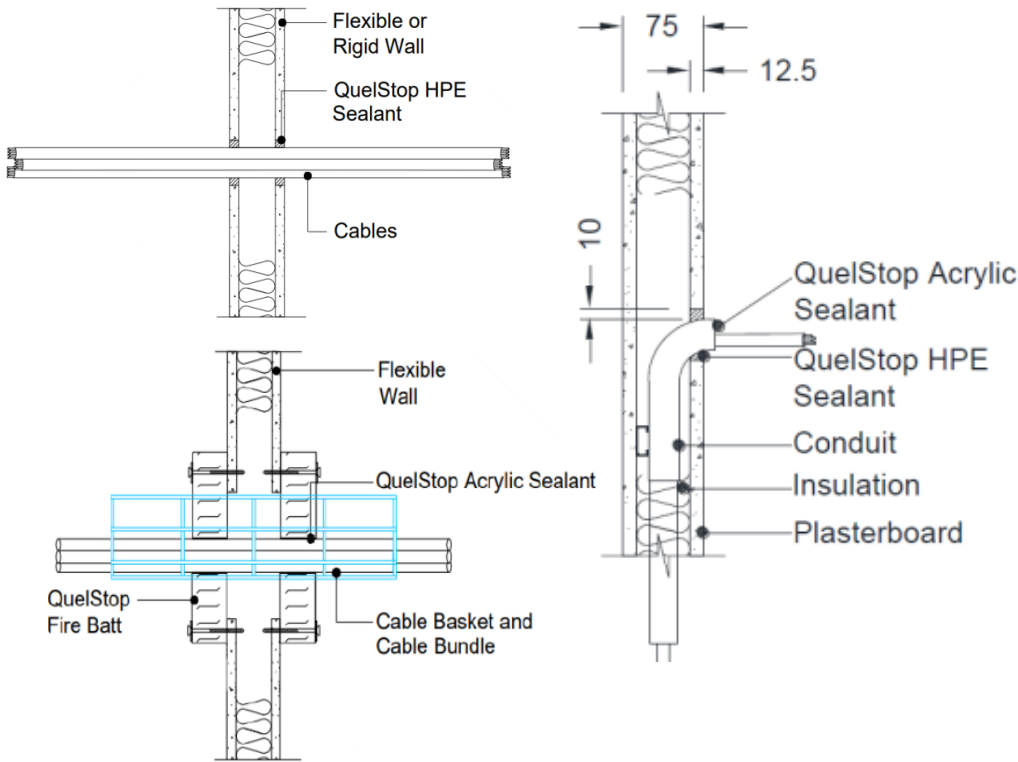
Please note that for single skin PB walls that are 100mm or thicker, double & pattress batt details on pages 11 to 16 may also be suitable.



# Single Skin Wall – Electrical

Service Penetration Type	Direct Seal	Letterbox Batt	Pattress Batt
Cable / bundles / trays / basket / ladder & ≤16mm diameter conduit	<a href="#">QSS-FW75-01</a>	<a href="#">QB-FW75-S-01</a>	<a href="#">QB-FW75-P-01</a>
	<a href="#">HPE-FW75-06</a>	<a href="#">QB-FW75-S-02</a>	<a href="#">QB-FW75-P-02</a>
Cable – partial penetration	<a href="#">QSS-FW75-PP-01</a>		
Trunking	<a href="#">QFP-FW75-07</a>		<a href="#">QB-FW75-P-13</a>
Plastic Conduit ≥16mm diameter	<a href="#">QSS-FW75-05</a>		<a href="#">QB-FW75-P-14</a>
	<a href="#">HPE-FW75-10</a>		
Plastic Conduit – partial penetration	<a href="#">HPE-FW75-PP-10</a>		
Metal Conduit ≥16mm dia	<a href="#">HPE-FW75-11</a>		<a href="#">QB-FW75-P-15</a>
			<a href="#">QB-FW75-P-17</a>
Metal Conduit – partial penetration	<a href="#">QSS-FW75-PP-05</a>		

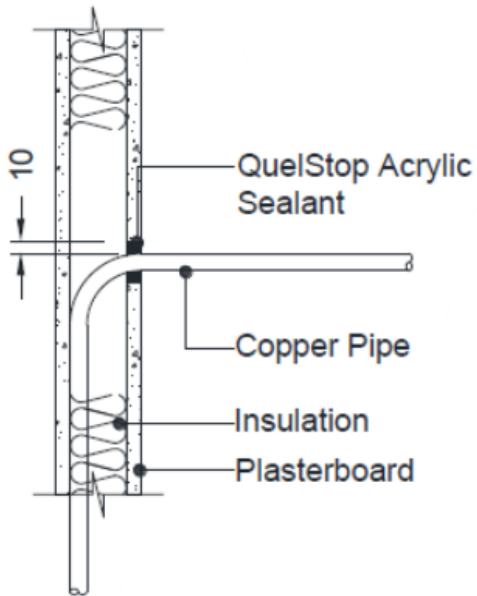
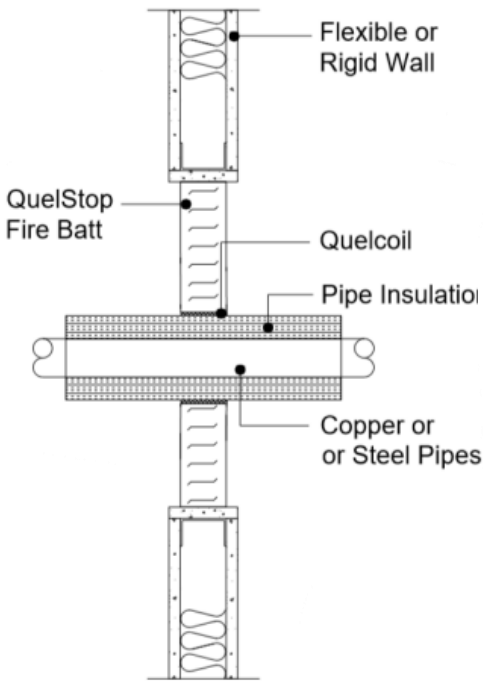
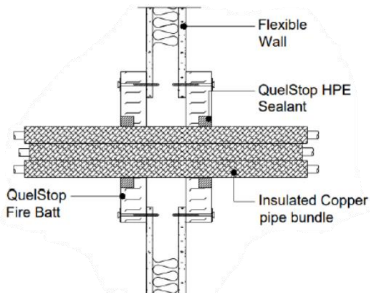
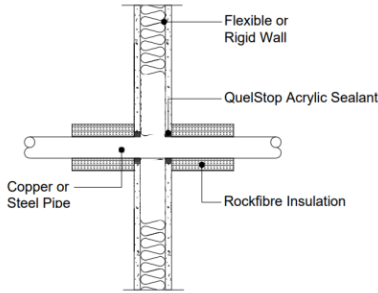
Please note that for single skin PB walls that are 100mm or thicker, double & pattress batt details on pages 11 to 16 may also be suitable.



# Single Skin Wall – Metallic Pipe

Service Penetration Type	Direct Seal	Letterbox Batt	Pattress Batt
Uninsulated Metal Pipe	<a href="#">QSS-FW75-02</a>		<a href="#">QB-FW75-P-10</a>
	<a href="#">QSS-FW75-03</a>		
Uninsulated Metal Pipe – partial penetration	<a href="#">QSS-FW75-PP-03</a>		
Insulated Metal Pipe	<a href="#">QSS-FW75-06</a>	<a href="#">QB-FW75-S-03</a>	<a href="#">QB-FW75-P-03</a>
	<a href="#">HPE-FW75-05</a>	<a href="#">QB-FW75-S-04</a>	<a href="#">QB-FW75-P-04</a>
			<a href="#">QB-FW75-P-11</a>
Sleeved Gas Pipe			<a href="#">QB-FW75-P-12</a>

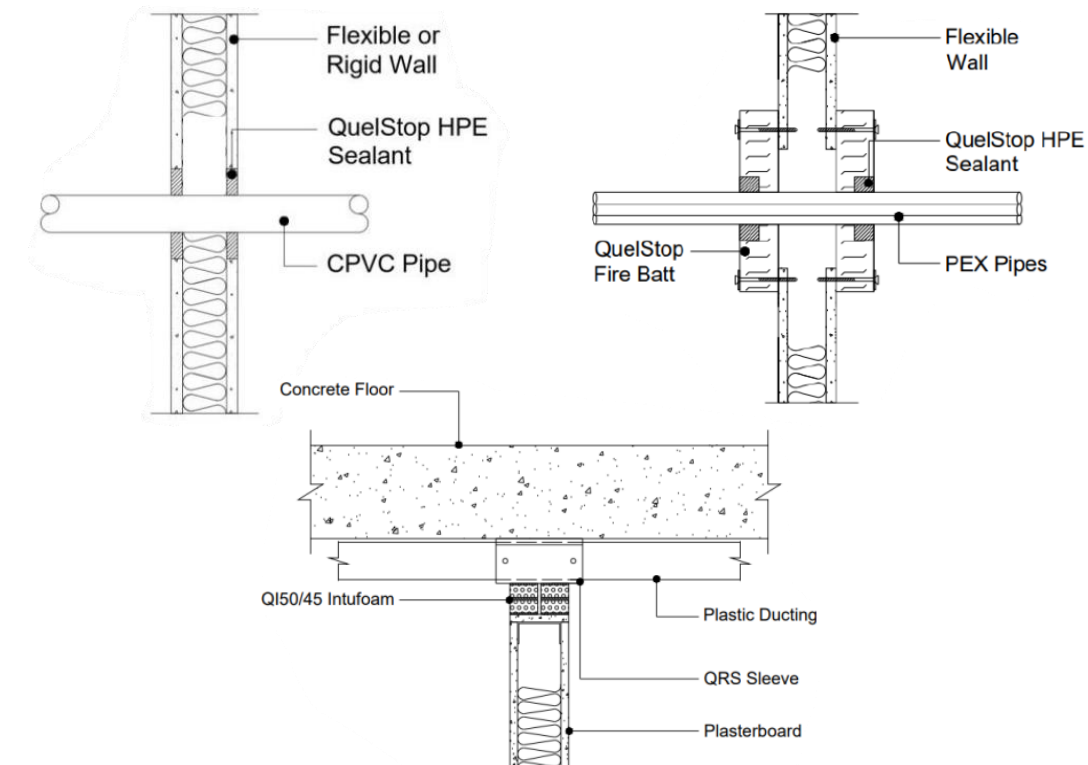
Please note that for single skin PB walls that are 100mm or thicker, double & pattress batt details on pages 11 to 16 may also be suitable.



# Single Skin Wall – Plastic & CPVC Pipe

Service Penetration Type	Direct Seal	Letterbox Batt	Pattress Batt
Plastic Pipe	<a href="#">QWR-FW75-01</a>	<a href="#">QB-FW75-S-06</a>	<a href="#">QB-FW75-P-06</a>
	<a href="#">HPE-FW75-01</a>	<a href="#">QB-FW75-S-07</a>	<a href="#">QB-FW75-P-08</a>
Plastic Pipe – partial penetration	<a href="#">HPE-FW75-PP-01</a>		
Plastic Pipe - bundle	<a href="#">HPE-FW75-08</a>		<a href="#">QB-FW75-P-16</a>
Plastic Vent Duct Pipe <small>See Knowledge Hub</small>	<a href="#">QRS-FW75-01</a>	<a href="#">QB-FW75-S-18</a>	<a href="#">QB-FW75-P-18</a>
	<a href="#">QRS-FW75-02</a>		
Plastic Vent Duct Pipe with Intufoam below	<a href="#">QRS-FW95-02</a>		
CPVC Sprinkler Pipe <small>Lubrizol &amp; Spears Approved</small>	<a href="#">HPE-FW75-02</a>	<a href="#">QB-FW75-S-05</a>	<a href="#">QB-FW75-P-05</a>

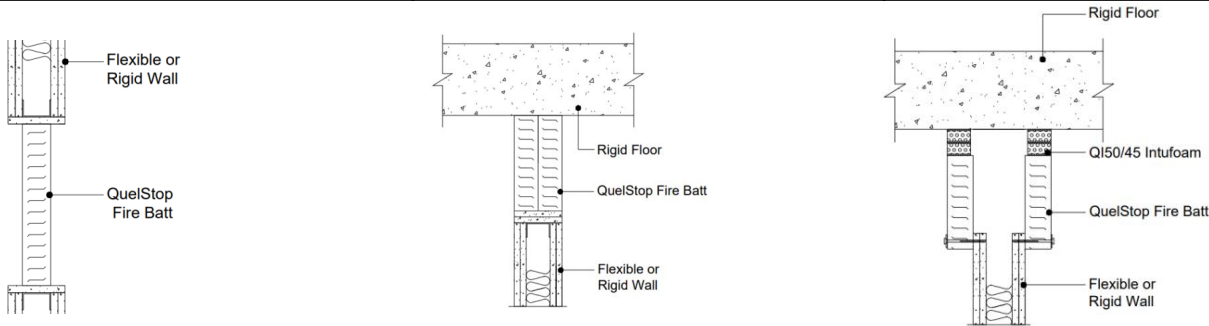
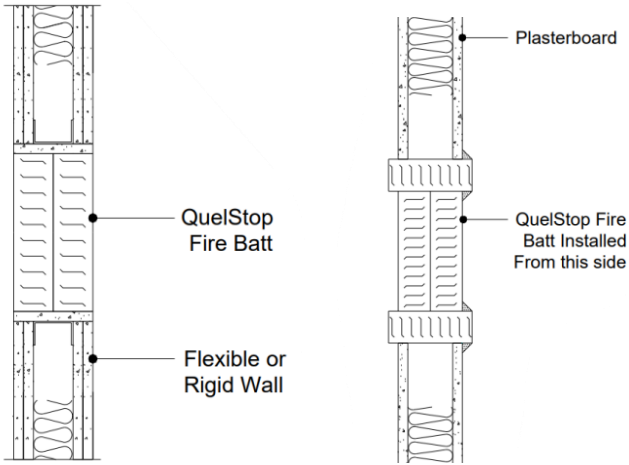
Please note that for single skin PB walls that are 100mm or thicker, double & pattress batt details on pages 11 to 16 may also be suitable.





# Double Skin Wall – Blank Seal & HoW

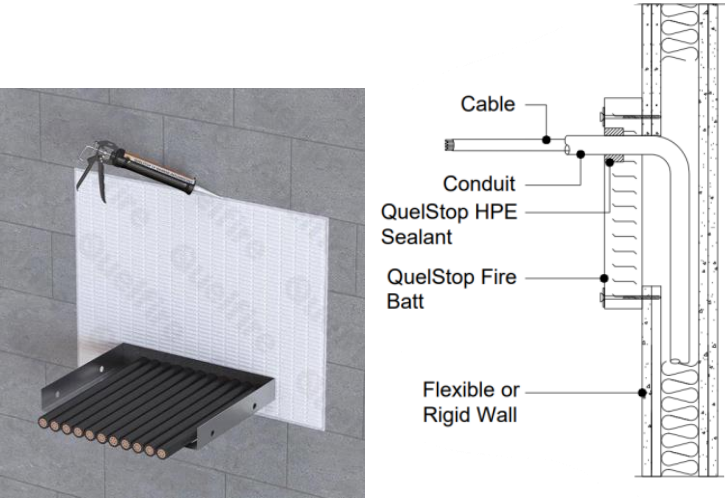
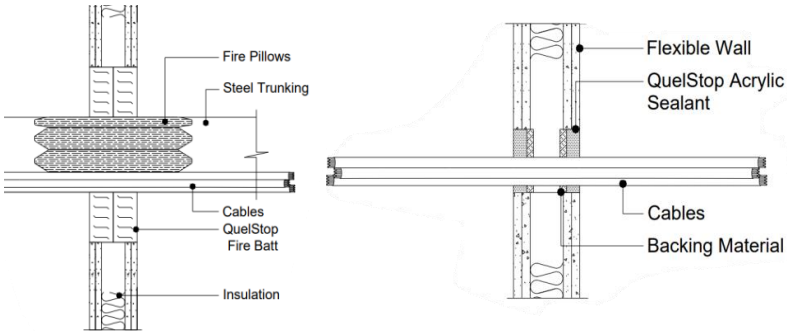
Service Penetration Type	Letterbox Batt	Pattress Batt
N/A – Blank Seal	<a href="#">QB-FW100-S-00</a>	<a href="#">QB-FW100-P-00</a>
N/A – Blank Seal – Double skin wall	<a href="#">QB-FW100-D-00A</a>	
N/A – Blank Seal – Batt lining	<a href="#">QB-FW100-D-00C</a>	
N/A – Blank Seal – unframed and unlined	<a href="#">QB-FW100-D-00D</a>	
Head of Wall (HoW)	<a href="#">QB-FW100-D-HOW-01</a>	<a href="#">QB-FW100-P-HOW-01</a>
Blank Seal – to steel profiled deck	<a href="#">QB-FW100-D-HOW-02</a>	
HoW with Intufoam compressible joint seal	<a href="#">QB-FW100-D-HOW-03</a>	<a href="#">QB-FW100-P-HOW-04</a>



# Double Skin Wall – Electrical



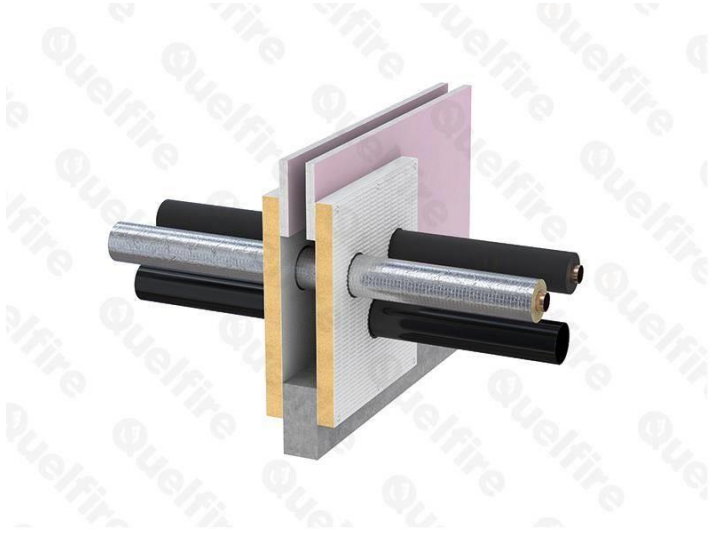
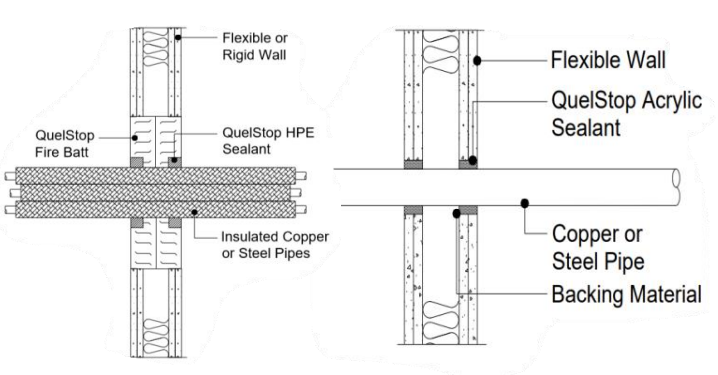
Service Penetration Type	Direct Seal	Letterbox Batt	Pattress Batt
Cable / bundles / trays / basket / ladder & ≤16mm diameter conduit	<a href="#">QSS-FW100-01</a>	<a href="#">QB-FW100-D-01</a>	<a href="#">QB-FW100-P-01</a>
	<a href="#">QSS-FW120-01</a>	<a href="#">QB-FW100-D-02</a>	<a href="#">QB-FW100-P-02</a>
	<a href="#">HPE-FW100-06</a>	<a href="#">QB-FW100-D-19</a>	<a href="#">QB-FW100-P-19</a>
	<a href="#">QWR-FW100-05</a>	<a href="#">QB-FW100-D-25</a>	<a href="#">QB-FW100-P-25</a>
	<a href="#">QRS-FW100-05</a>		
	<a href="#">QRS-FW100-10</a>		
Trunking		<a href="#">QB-FW100-D-13</a>	<a href="#">QB-FW100-P-13</a>
Plastic Conduit ≥16mm diameter		<a href="#">QB-FW100-D-14</a>	<a href="#">QB-FW100-P-14</a>
Plastic Conduit - partial penetration			<a href="#">QB-FW100-P-PP-14</a>
Metal Conduit ≥16mm diameter		<a href="#">QB-FW100-D-15</a>	<a href="#">QB-FW100-P-15</a>
		<a href="#">QB-FW100-D-17</a>	<a href="#">QB-FW100-P-17</a>
Metal Conduit – partial penetration			<a href="#">QB-FW100-P-PP-17</a>





# Double Skin – Metallic Pipe

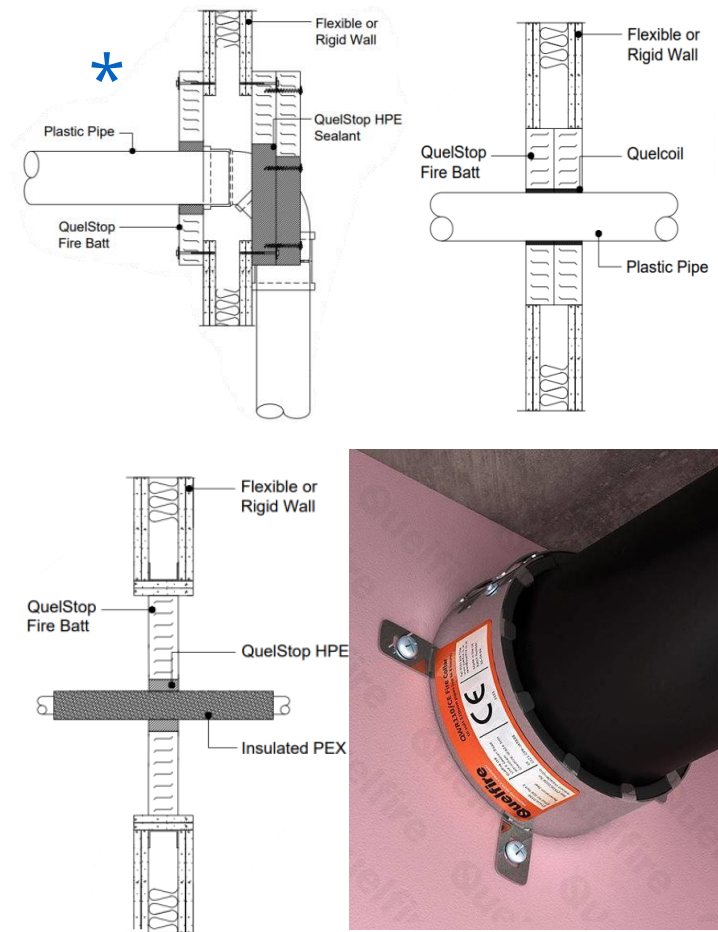
Service Penetration Type	Direct Seal	Letterbox Batt	Pattress Batt
Uninsulated Metal Pipe	<a href="#">QSS-FW100-03</a>	<a href="#">QB-FW100-D-23</a>	<a href="#">QB-FW100-P-23</a>
	<a href="#">QSS-FW120-03</a>	<a href="#">QB-FW100-D-10</a>	<a href="#">QB-FW100-P-10</a>
	<a href="#">QSS-FW100-02</a>		
	<a href="#">QSS-FW120-02</a>		
	<a href="#">QIF-FW132-02</a>		
Insulated Metal Pipe	<a href="#">HPE-FW100-05</a>	<a href="#">QB-FW100-S-10</a>	
	<a href="#">HPE-FW120-05</a>	<a href="#">QB-FW100-D-03</a>	<a href="#">QB-FW100-P-03</a>
	<a href="#">QIF-FW132-02</a>	<a href="#">QB-FW100-D-04</a>	<a href="#">QB-FW100-P-04</a>
		<a href="#">QB-FW100-D-11</a>	<a href="#">QB-FW100-P-11</a>
Insulated Metal Pipe (and cables)		<a href="#">QB-FW100-D-25</a>	<a href="#">QB-FW100-P-25</a>
Sleeved Gas Pipe		<a href="#">QB-FW100-D-12</a>	<a href="#">QB-FW100-P-12</a>



# Double Skin Wall – Plastic Pipe



Service Penetration Type	Direct Seal	Letterbox Batt	Pattress Batt
Plastic Pipe	<a href="#">QWR-FW100-01</a>	<a href="#">QB-FW100-D-07</a>	<a href="#">QB-FW100-P-07</a>
	<a href="#">QWR-FW130-01</a>	<a href="#">QB-FW100-S-06</a>	
	<a href="#">QCL-FW100-01</a>	<a href="#">QB-FW100-D-06</a>	<a href="#">QB-FW100-P-06</a>
	<a href="#">HPE-FW100-01</a>	<a href="#">QB-FW100-D-08</a>	<a href="#">QB-FW100-P-08</a>
	<a href="#">HPE-FW120-01</a>		<a href="#">QB-FW100-P-28 *</a>
	<a href="#">QIF-FW132-01</a>	<a href="#">QB-FW100-D-09</a>	<a href="#">QB-FW100-P-09</a>
Plastic Pipe – large diameter		<a href="#">QB-FW100-D-27</a>	
Plastic Pipe – bundle	<a href="#">HPE-FW100-08</a>	<a href="#">QB-FW100-D-16</a>	<a href="#">QB-FW100-P-16</a>
Plastic Pipe - Radiator socket box Partial penetration	<a href="#">HPE-FW100-PP-01</a>		
Insulated Plastic Pipe		<a href="#">QB-FW100-S-20</a>	<a href="#">QB-FW100-P-20</a>
		<a href="#">QB-FW100-D-20</a>	
Insulated Plastic Pipe – Python Pipe		<a href="#">QB-FW100-D-29</a>	



# Double Skin Wall – CPVC, Busbar, Damper




PROTECTING PEOPLE & PROPERTY

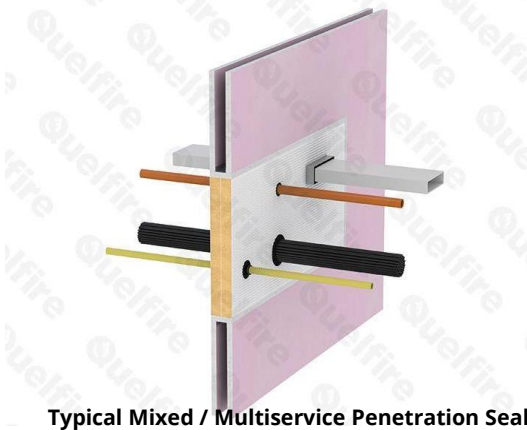
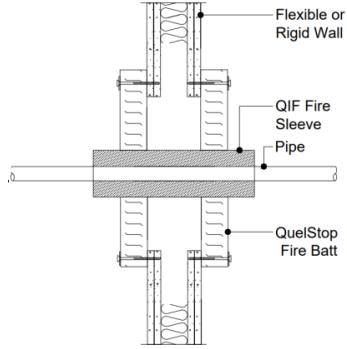
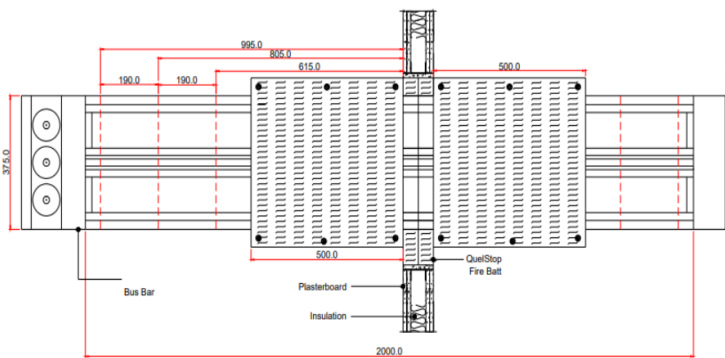
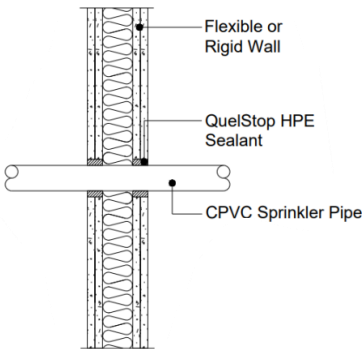
Service Penetration Type	Direct Seal	Letterbox Batt	Pattress Batt
<b>CPVC Sprinkler Pipe</b> Lubrizol & Spears Approved	<a href="#">HPE-FW100-02</a>	<a href="#">QB-FW100-S-05</a>	<a href="#">QB-FW100-P-05</a>
		<a href="#">QB-FW100-D-05</a>	
	<a href="#">QIF-FW132-01</a>	<a href="#">QB-FW100-D-24</a>	<a href="#">QB-FW100-P-24</a>
<b>Busbar</b>		<a href="#">QB-FW100-D-35</a>	
<b>Floor Busbar</b>		<a href="#">QB-FW100-D-36</a>	
<b>Damper</b>		<a href="#">QB-FW100-D-31</a>	

Check out the FAQ's in our "Knowledge Hub"

Considerations when firestopping CPVC pipes Firestopping FAQs



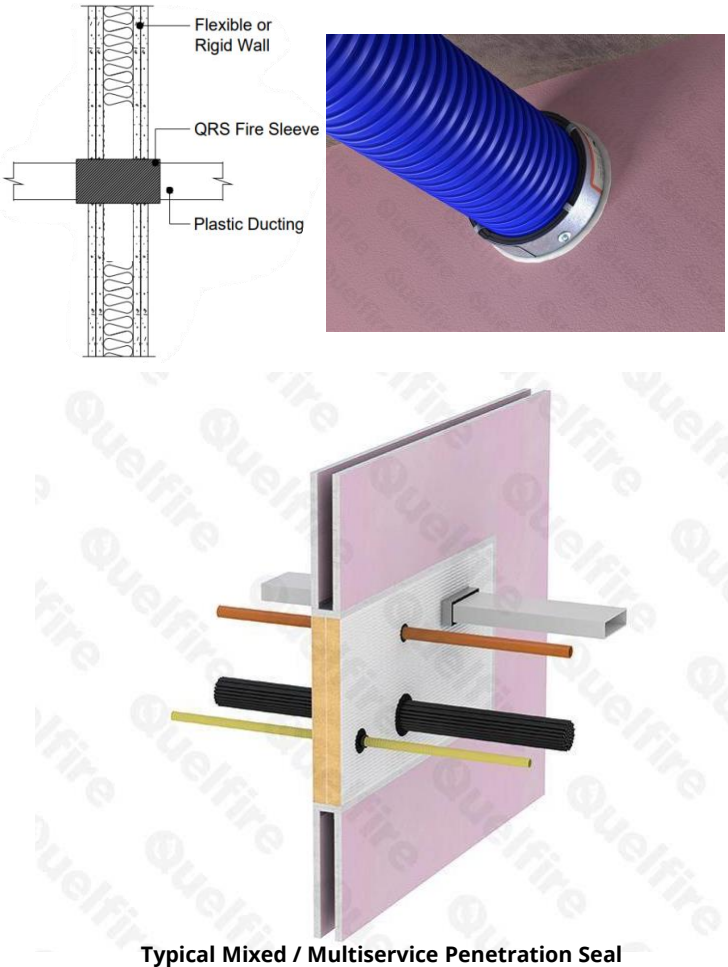
QuelStop HPE Sealant has been approved to be used with both BlazeMaster and Spears CPVC sprinkler pipes. It has also been tested in a wide range of applications from single-skin plasterboard walls to over-sized holes and formed letterboxes



Typical Mixed / Multiservice Penetration Seal

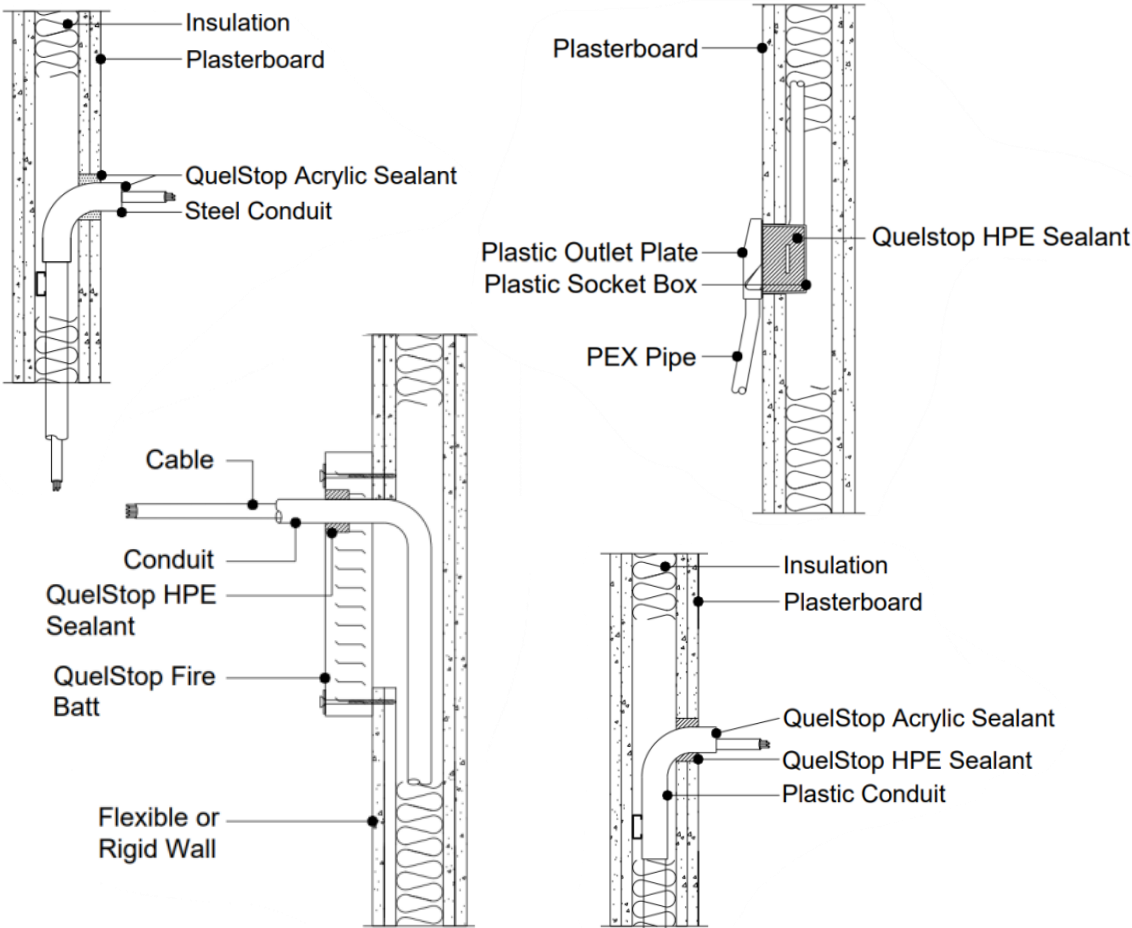
# Double Skin Wall – Vent Duct Pipe

Service Penetration Type	Direct Seal	Letterbox Batt	Pattress Batt
<b>Plastic Vent Duct Pipe</b> <small>See Knowledge Hub</small>	<a href="#">QRS-FW100-01</a>	<a href="#">QB-FW100-D-18</a>	<a href="#">QB-FW100-P-18</a>
	<a href="#">QRS-FW100-02</a>		<a href="#">QB-FW130-P-18</a>
	<a href="#">QRS-FW130-01</a>		
	<a href="#">QRS-FW130-02</a>		
	<a href="#">QWR-FW100-04</a>		
<b>Plastic Vent Duct – metal duct transition</b>	<a href="#">QRS-FW100-07</a>		
<b>Plastic Vent Duct Pipe – External Wall</b>	<a href="#">QRS-FW100-04</a>		
	<a href="#">QRS-FW130-04</a>		
<b>Plastic Vent Duct Pipe – External Wall – metal duct transition</b>	<a href="#">QRS-FW100-06</a>		



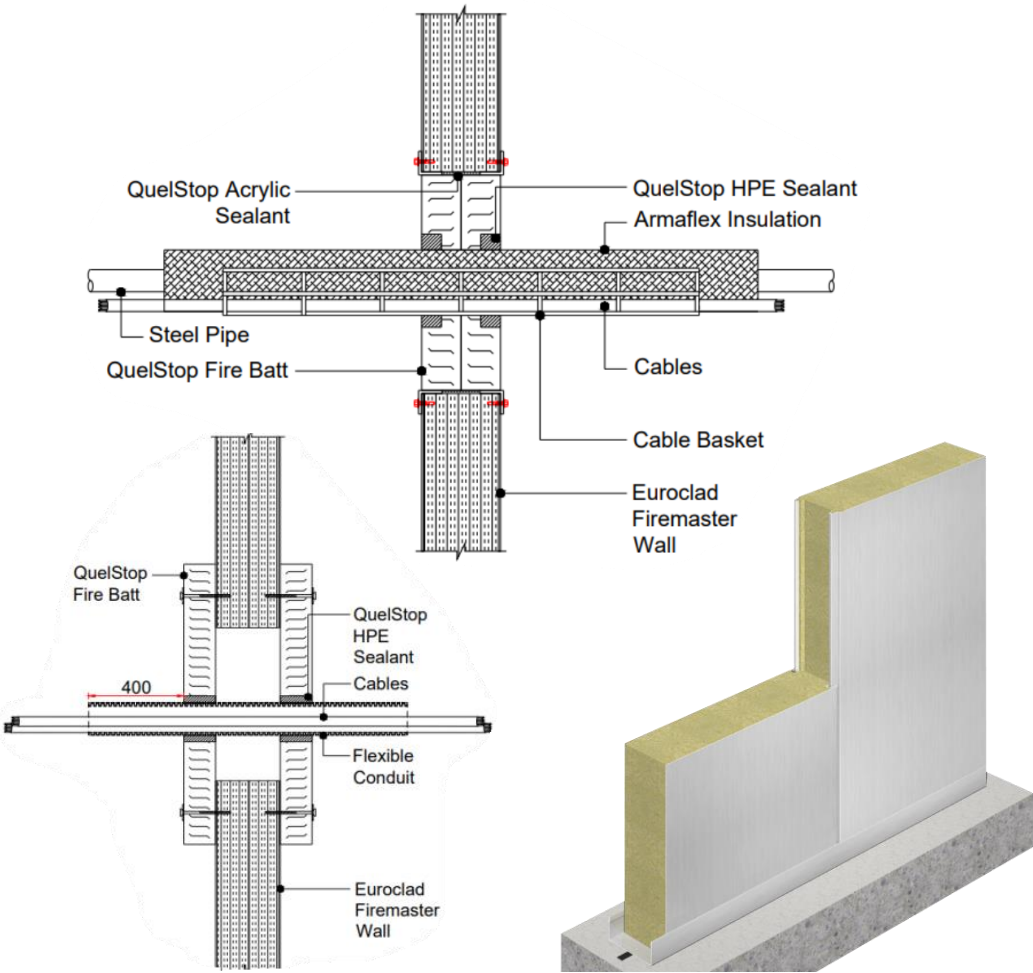
# Partial Penetrations

Service Penetration Type	Direct Seal	Batt Seal
Cable – partial penetration	<a href="#">QSS-FW75-PP-01</a>	
Plastic Conduit - partial penetration	<a href="#">HPE-FW75-PP-10</a>	<a href="#">QB-FW100-P-PP-14</a>
	<a href="#">HPE-FW100-PP-10</a>	
Metal Conduit - partial penetration	<a href="#">QSS-FW75-PP-05</a>	<a href="#">QB-FW100-P-PP-17</a>
	<a href="#">QSS-FW100-PP-05</a>	
Plastic Pipe – Partial - radiator socket	<a href="#">HPE-FW100-PP-01</a>	
Plastic Pipe – partial penetration	<a href="#">HPE-FW75-PP-01</a>	
Metal Pipe – partial penetration	<a href="#">QSS-FW75-PP-03</a>	



# 100mm Whitewall – Blank & Electrical

Service Penetration Type	Letterbox Batt	Pattress Batt
Blank Seal	<a href="#">QB-WW100-D-00</a>	<a href="#">QB-WW100-P-00</a>
Cable / bundles / trays / basket / ladder & ≤16mm diameter conduit	<a href="#">QB-WW100-D-01</a>	<a href="#">QB-WW100-P-01</a>
	<a href="#">QB-WW100-D-02</a>	<a href="#">QB-WW100-P-02</a>
	<a href="#">QB-WW100-D-19</a>	<a href="#">QB-WW100-P-19</a>
	<a href="#">QB-WW100-D-25</a>	<a href="#">QB-WW100-P-25</a>
Trunking	<a href="#">QB-WW100-D-13</a>	<a href="#">QB-WW100-P-13</a>
Conduit	<a href="#">QB-WW100-D-14</a>	<a href="#">QB-WW100-P-14</a>
	<a href="#">QB-WW100-D-15</a>	<a href="#">QB-WW100-P-15</a>
	<a href="#">QB-WW100-D-17</a>	<a href="#">QB-WW100-P-17</a>

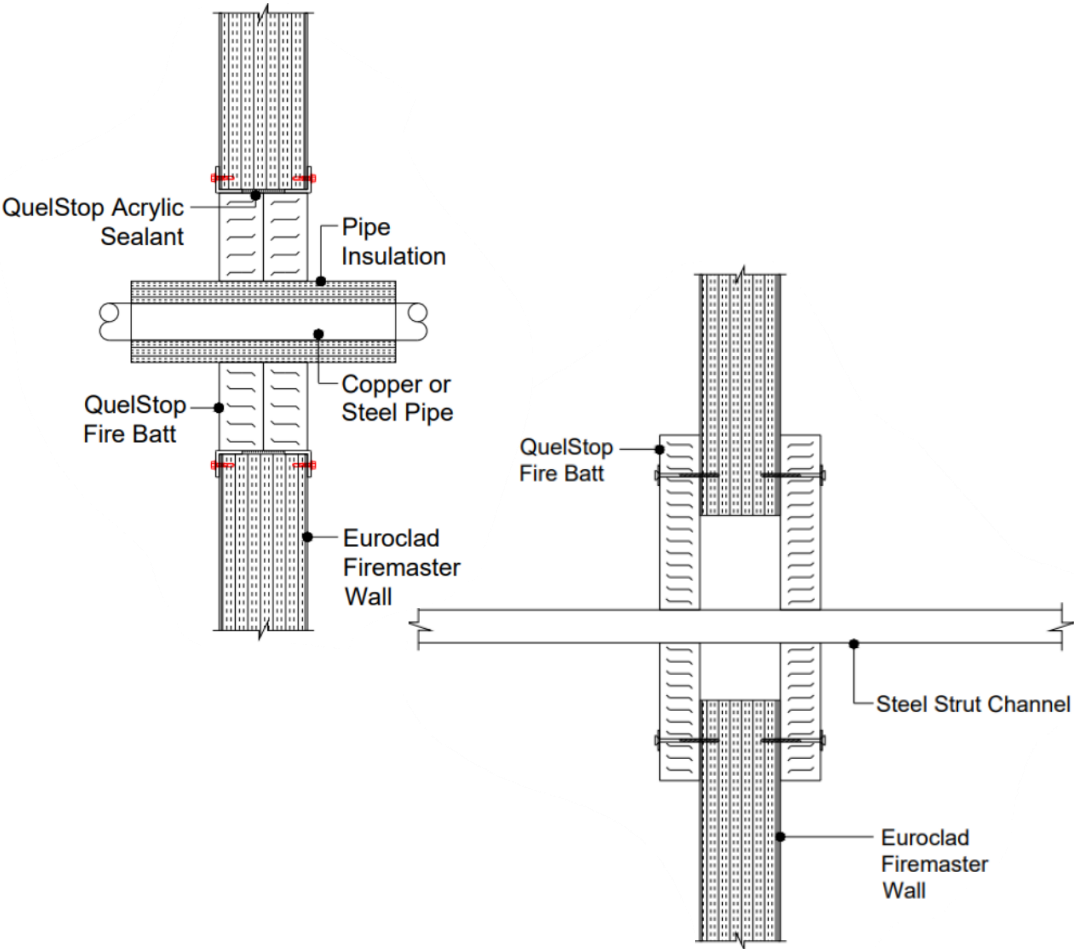




# 100mm Whitewall – Metallic Pipe & Strut



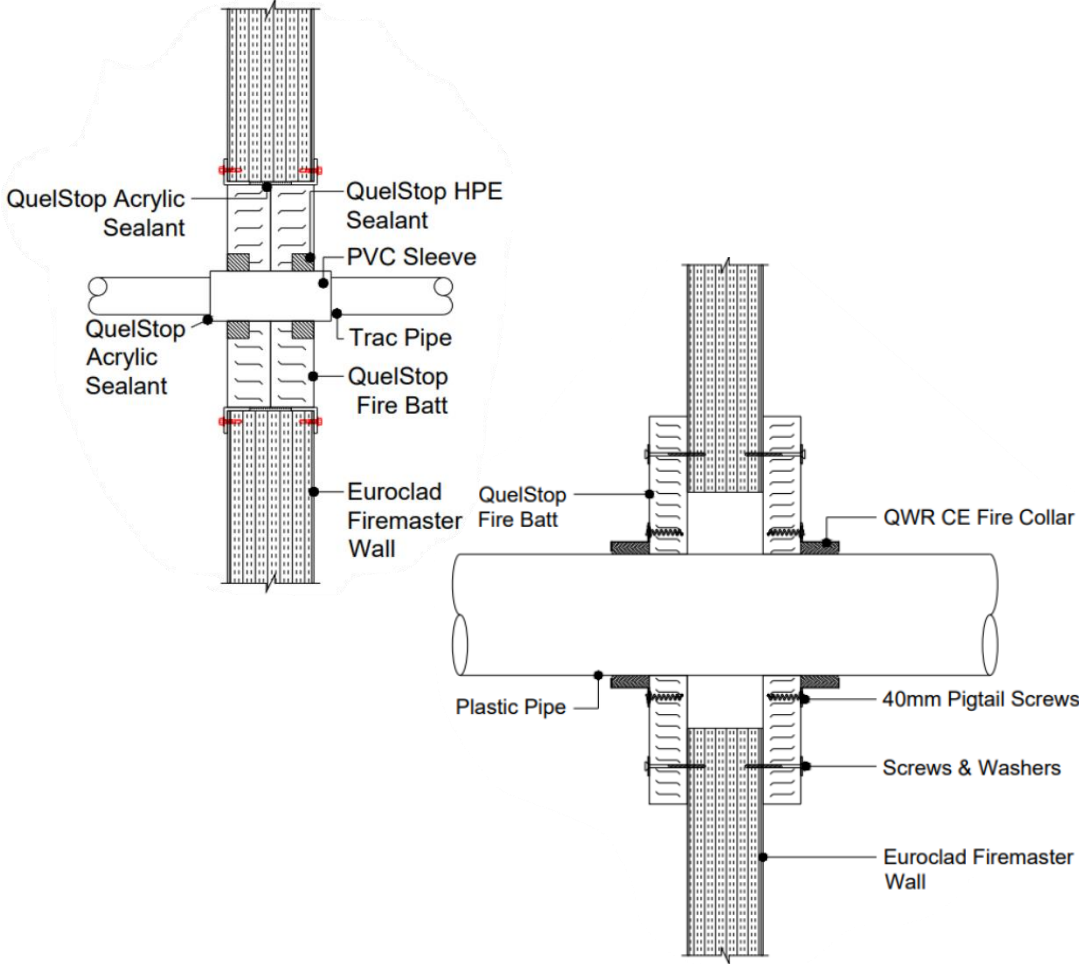
Service Penetration Type	Letterbox Batt	Pattress Batt
Uninsulated Metal Pipe	<a href="#">QB-WW100-D-10</a>	<a href="#">QB-WW100-P-10</a>
	<a href="#">QB-WW100-D-23</a>	<a href="#">QB-WW100-P-23</a>
Insulated Metal Pipe	<a href="#">QB-WW100-D-03</a>	<a href="#">QB-WW100-P-03</a>
	<a href="#">QB-WW100-D-04</a>	<a href="#">QB-WW100-P-04</a>
	<a href="#">QB-WW100-D-11</a>	<a href="#">QB-WW100-P-11</a>
Insulated Metal Pipe (and cables)	<a href="#">QB-WW100-D-25</a>	<a href="#">QB-WW100-P-25</a>
Sleeved Gas Pipe	<a href="#">QB-WW100-D-12</a>	<a href="#">QB-WW100-P-12</a>
Steel Strut	<a href="#">QB-WW100-D-26</a>	<a href="#">QB-WW100-P-26</a>



# 100mm Whitewall - CPVC & Plastic Pipe



Service Penetration Type	Letterbox Batt	Pattress Batt
CPVC Sprinkler Pipe <small>Lubrizol &amp; Spears Approved</small>	<a href="#">QB-WW100-D-05</a>	<a href="#">QB-WW100-P-05</a>
	<a href="#">QB-WW100-D-24</a>	<a href="#">QB-WW100-P-24</a>
Sleeved Gas Pipe	<a href="#">QB-WW100-D-12</a>	<a href="#">QB-WW100-P-12</a>
Plastic Vent Duct Pipe	<a href="#">QB-WW100-D-18</a>	<a href="#">QB-WW100-P-18</a>
Plastic Pipe Bundle	<a href="#">QB-WW100-D-16</a>	<a href="#">QB-WW100-P-16</a>
Insulated Plastic Pipe	<a href="#">QB-WW100-D-20</a>	<a href="#">QB-WW100-P-20</a>
Plastic Pipe	<a href="#">QB-WW100-D-06</a>	<a href="#">QB-WW100-P-06</a>
	<a href="#">QB-WW100-D-07</a>	<a href="#">QB-WW100-P-07</a>
	<a href="#">QB-WW100-D-08</a>	<a href="#">QB-WW100-P-08</a>
	<a href="#">QB-WW100-D-09</a>	<a href="#">QB-WW100-P-09</a>

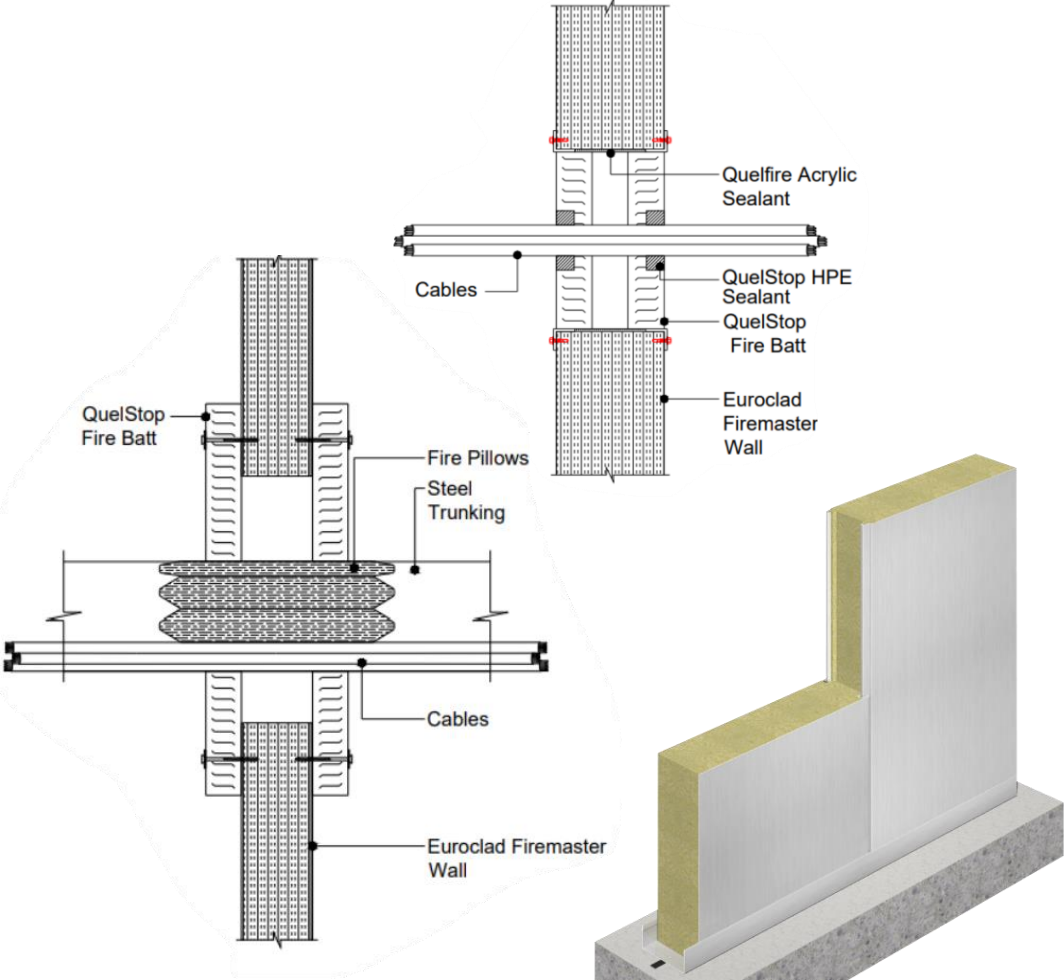




# 150mm Whitewall – Blank & Electrical



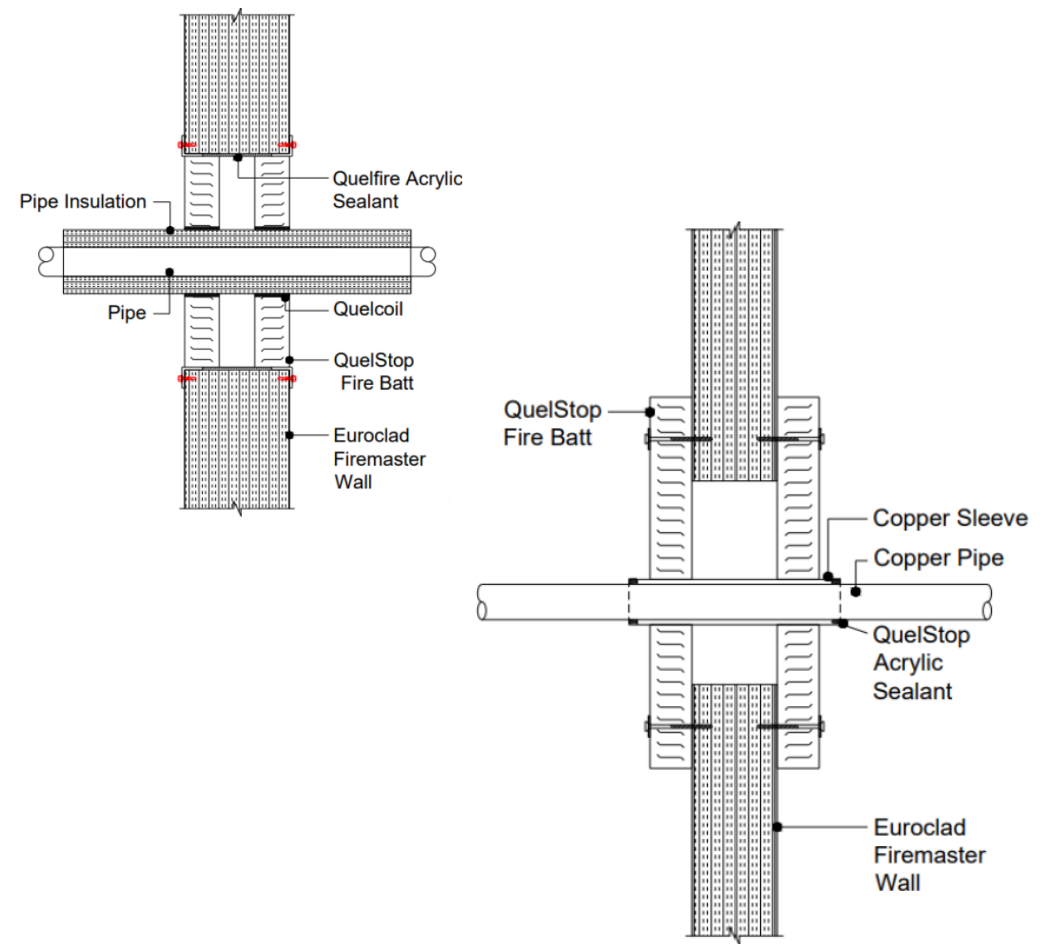
Service Penetration Type	Letterbox Batt	Pattress Batt
Blank Seal	<a href="#">QB-WW150-D-00</a>	<a href="#">QB-WW150-P-00</a>
Cable / bundles / trays / basket / ladder & ≤16mm diameter conduit		<a href="#">QB-WW150-P-01</a>
	<a href="#">QB-WW150-D-02</a>	<a href="#">QB-WW150-P-02</a>
	<a href="#">QB-WW150-D-19</a>	<a href="#">QB-WW150-P-19</a>
	<a href="#">QB-WW150-D-25</a>	<a href="#">QB-WW150-P-25</a>
Trunking	<a href="#">QB-WW150-D-13</a>	<a href="#">QB-WW150-P-13</a>
Conduit	<a href="#">QB-WW150-D-14</a>	<a href="#">QB-WW150-P-14</a>
	<a href="#">QB-WW150-D-15</a>	<a href="#">QB-WW150-P-15</a>
	<a href="#">QB-WW150-D-17</a>	<a href="#">QB-WW150-P-17</a>



# 150mm Whitewall – Metallic Pipe & Strut



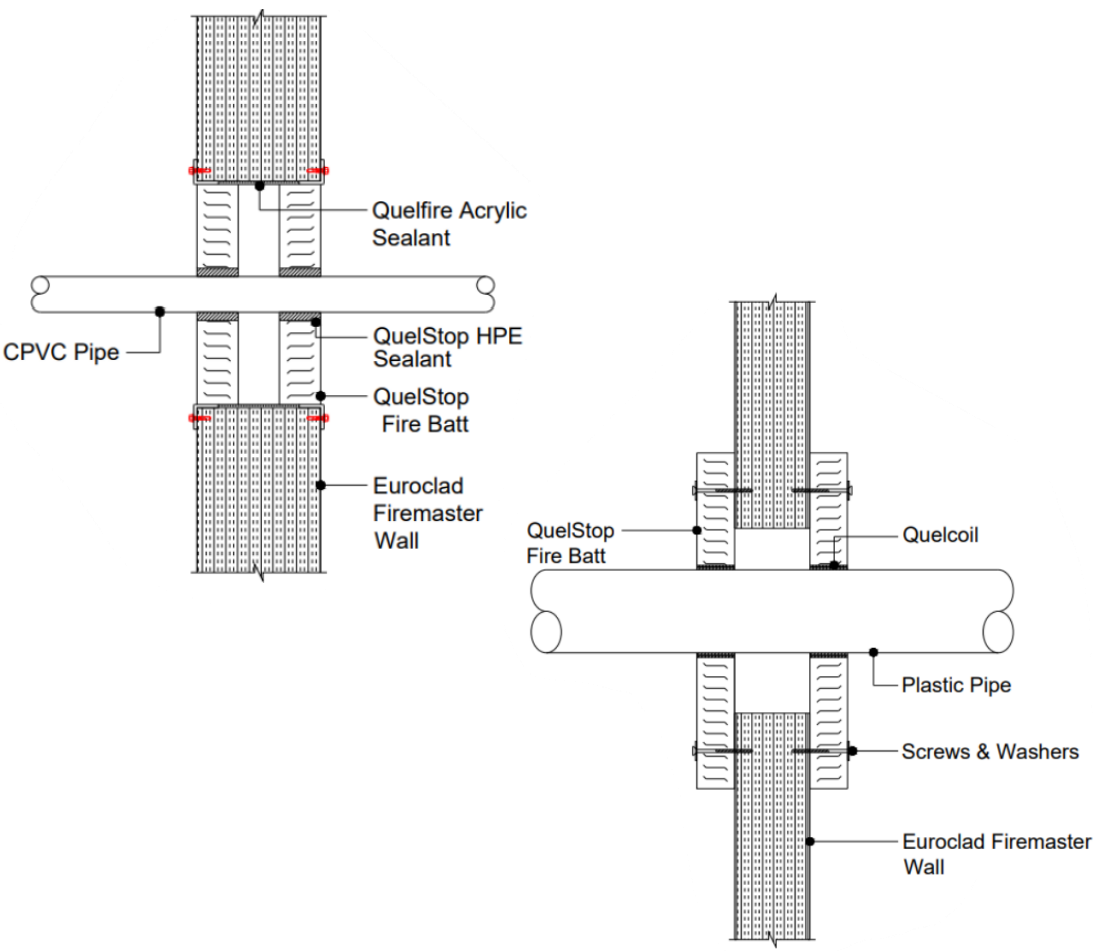
Service Penetration Type	Letterbox Batt	Pattress Batt
Uninsulated Metal Pipe	<a href="#">QB-WW150-D-10</a>	<a href="#">QB-WW150-P-10</a>
	<a href="#">QB-WW150-D-23</a>	<a href="#">QB-WW150-P-23</a>
Insulated Metal Pipe	<a href="#">QB-WW150-D-03</a>	<a href="#">QB-WW150-P-03</a>
	<a href="#">QB-WW150-D-04</a>	<a href="#">QB-WW150-P-04</a>
	<a href="#">QB-WW150-D-11</a>	<a href="#">QB-WW150-P-11</a>
Insulated Metal Pipe (and cables)	<a href="#">QB-WW150-D-25</a>	<a href="#">QB-WW150-P-25</a>
Sleeved Gas Pipe	<a href="#">QB-WW150-D-12</a>	<a href="#">QB-WW150-P-12</a>
Steel Strut	<a href="#">QB-WW150-D-26</a>	<a href="#">QB-WW150-P-26</a>



# 150mm Whitewall - CPVC & Plastic Pipe



Service Penetration Type	Letterbox Batt	Pattress Batt
CPVC Sprinkler Pipe <small>Lubrizol &amp; Spears Approved</small>	<a href="#">QB-WW150-D-05</a>	<a href="#">QB-WW150-P-05</a>
	<a href="#">QB-WW150-D-24</a>	<a href="#">QB-WW150-P-24</a>
Sleeved Gas Pipe	<a href="#">QB-WW150-D-12</a>	<a href="#">QB-WW150-P-12</a>
Plastic Vent Duct Pipe	<a href="#">QB-WW150-D-18</a>	<a href="#">QB-WW150-P-18</a>
Plastic Pipe Bundle	<a href="#">QB-WW150-D-16</a>	<a href="#">QB-WW150-P-16</a>
Insulated Plastic Pipe	<a href="#">QB-WW150-D-20</a>	<a href="#">QB-WW150-P-20</a>
Plastic Pipe	<a href="#">QB-WW150-D-06</a>	<a href="#">QB-WW150-P-06</a>
	<a href="#">QB-WW150-D-07</a>	<a href="#">QB-WW150-P-07</a>
	<a href="#">QB-WW150-D-08</a>	<a href="#">QB-WW150-P-08</a>
	<a href="#">QB-WW150-D-09</a>	<a href="#">QB-WW150-P-09</a>

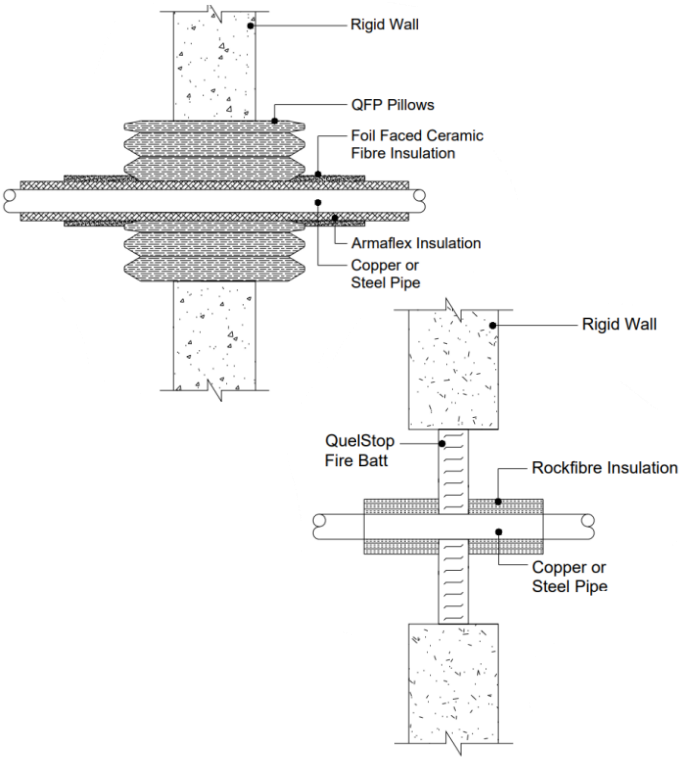


# Rigid Wall – HoW, Electrical & Metal Pipe



Service Penetration Type	Direct Seal	Batt (Letterbox or Pattress)	QF2
Head of Wall (HoW)		<a href="#">QB-RW100-D-HOW-01</a>	
Cable / bundles / trays / basket / ladder & ≤16mm diameter conduit	<a href="#">QWR-RW100-05</a>	<a href="#">QB-RW150-S-01</a>	<a href="#">QF2-RW150-01</a>
	<a href="#">QFP-RW150-01</a>	<a href="#">QB-RW150-S-02</a>	
		<a href="#">QB-RW140-D-02</a>	
		<a href="#">QB-RW150-D-01</a>	
		<a href="#">QB-RW150-D-02</a>	
Uninsulated Metal Pipe	<a href="#">QSS-RW150-02</a>	<a href="#">QB-RW100-D-10</a>	<a href="#">QF2-RW150-10</a>
	<a href="#">QSS-RW150-03</a>	<a href="#">QB-RW100-P-10</a>	
	<a href="#">QFP-RW150-02</a>	<a href="#">QB-RW150-S-10</a>	
	<a href="#">QFP-RW150-03</a>	<a href="#">QB-RW150-D-10</a>	
Insulated Metal Pipe	<a href="#">QFP-RW150-06</a>		

Please note that standard details for flexible walls (FW) can generally be used for Rigid Walls (RW) too so details may not be limited to those on this page.



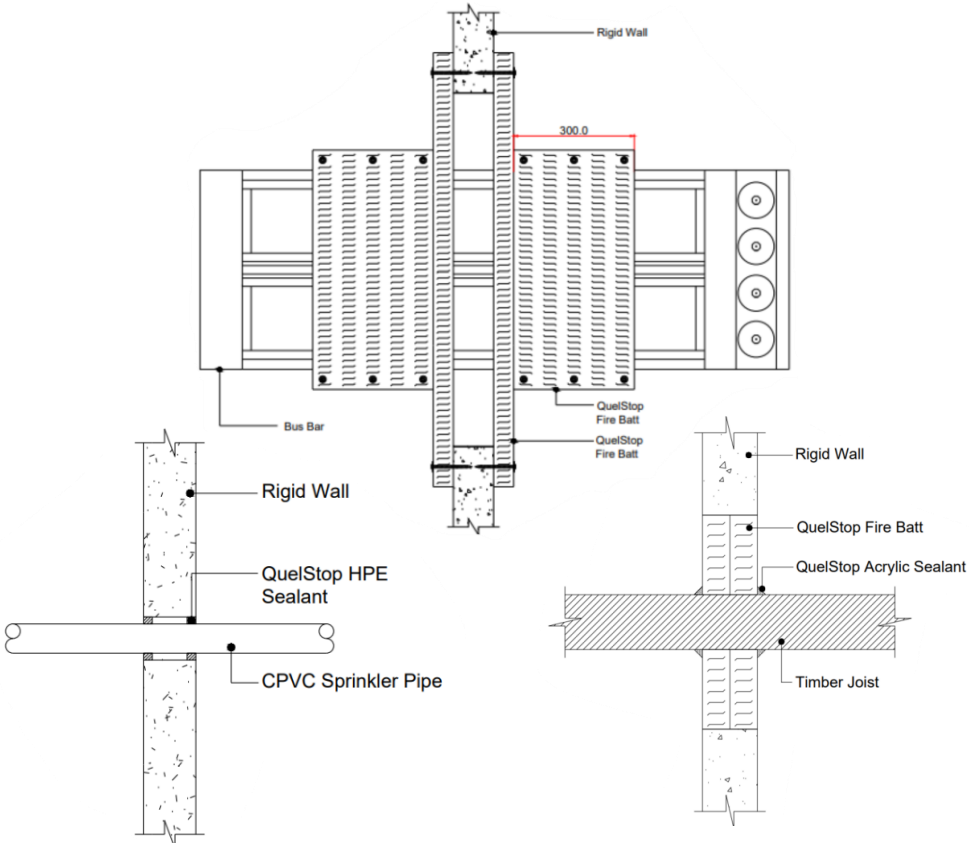
# Rigid Wall – Plastic Pipe, Timber & Busbar



PROTECTING PEOPLE & PROPERTY

Service Penetration Type	Direct Seal	Batt (Letterbox or Pattress)
Plastic Pipe	<a href="#">QWR-RW75-01</a>	<a href="#">QB-RW150-S-08</a>
	<a href="#">QWR-RW100-01</a>	<a href="#">QB-RW150-D-08</a>
	<a href="#">QWR-RW130-01</a>	
	<a href="#">QIF-RW150-01</a>	
Plastic Pipe – large diameter	<a href="#">QWX-RW150-01</a>	
CPVC Sprinkler Pipe <small>Lubrizol &amp; Spears Approved</small>	<a href="#">HPE-RW100-02</a>	
Plastic Vent Duct Pipe	<a href="#">QWR-RW100-04</a>	
Timber Joists		<a href="#">QB-RW100-D-26</a>
		<a href="#">QB-RW100-P-26</a>
Busbar		<a href="#">QB-RW100-D-35</a>
		<a href="#">QB-RW100-P-35</a>

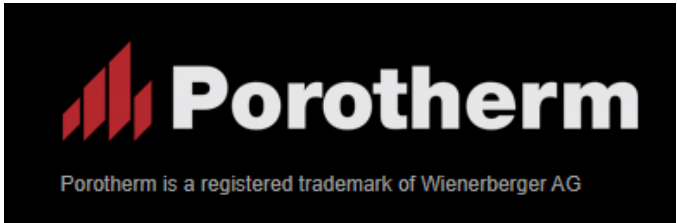
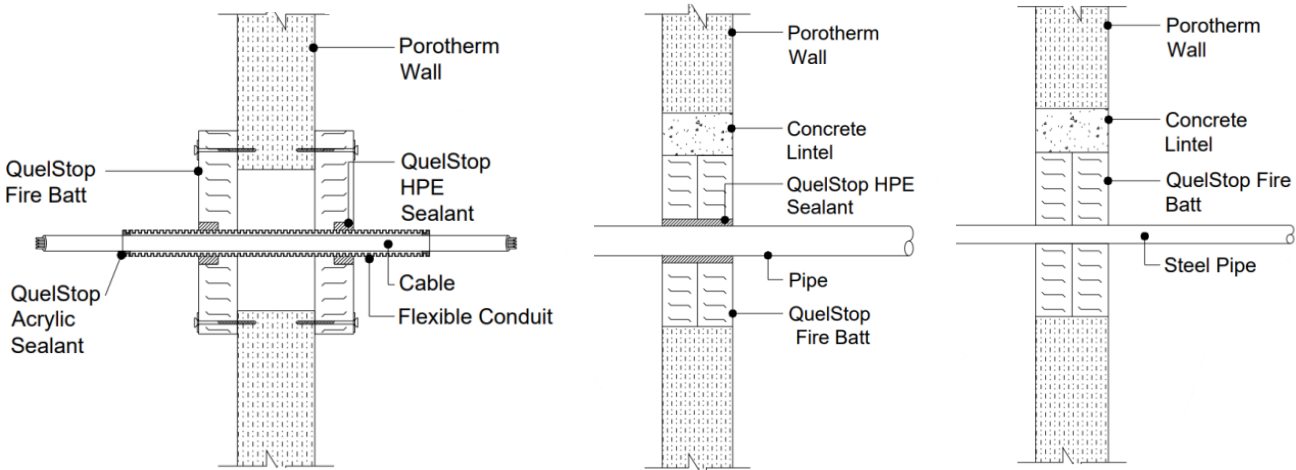
Please note that standard details for flexible walls (FW) can generally be used for Rigid Walls (RW) too so details may not be limited to those on this page.



# Porotherm



Service Penetration Type	Letterbox Batt	Pattress Batt
N/A – Blank Seal	<a href="#">QB-PT100-D-00</a>	<a href="#">QB-PT100-P-00</a>
Cable, trays & basket	<a href="#">QB-PT100-D-02</a>	<a href="#">QB-PT100-P-01</a>
Conduit	<a href="#">QB-PT100-D-14</a>	<a href="#">QB-PT100-P-14</a>
Uninsulated metal pipes	<a href="#">QB-PT100-D-10</a>	<a href="#">QB-PT100-P-10</a>
Plastic Pipe	<a href="#">QB-PT100-D-08</a>	<a href="#">QB-PT100-P-08</a>
CPVC Sprinkler Pipe <small>Lubrizol &amp; Spears Approved</small>	<a href="#">QB-PT100-D-05</a>	<a href="#">QB-PT100-P-05</a>



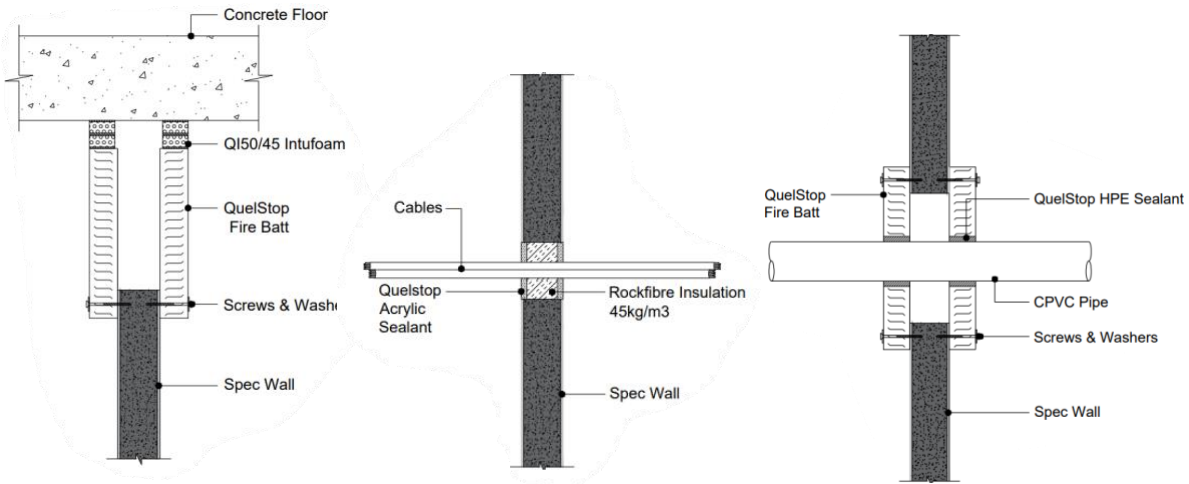
[www.porotherm.co.uk](http://www.porotherm.co.uk)  
[info@porotherm.co.uk](mailto:info@porotherm.co.uk)



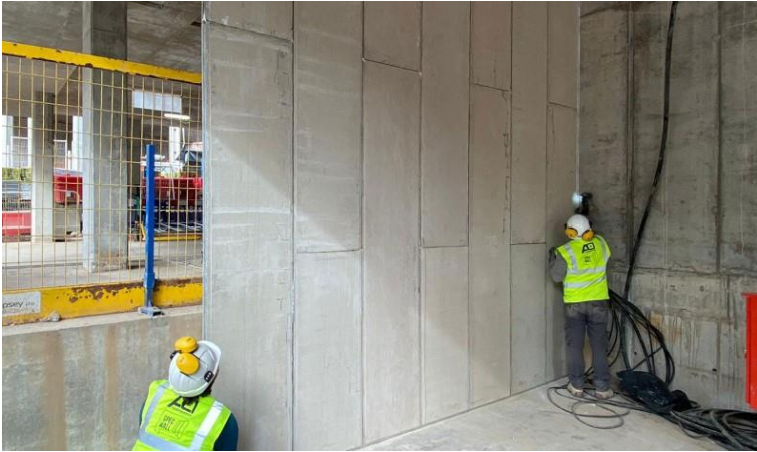


# Specwall

Service Penetration Type	Direct Seal	Pattress Batt
N/A – Blank Seal	<a href="#">QSS-SP75-00</a>	<a href="#">QB-SP75-P-00</a>
Head of Wall		<a href="#">QB-SP75-P-HOW-01</a>
Head of Wall - Intufoam		<a href="#">QB-SP75-P-HOW-04</a>
Cable, trays & basket	<a href="#">QSS-SP75-01</a>	<a href="#">QB-SP75-P-02</a>
Uninsulated metal pipes	<a href="#">QSS-SP75-02</a>	<a href="#">QB-SP75-P-10</a>
Insulated metal pipes		<a href="#">QB-SP75-P-04</a>
Plastic Pipe		<a href="#">QB-SP75-P-06</a>
		<a href="#">QB-SP75-P-07</a>
CPVC Sprinkler Pipe <small>Lubrizol &amp; Spears Approved</small>		<a href="#">QB-SP75-P-05</a>
Electrical Socket Box	<a href="#">PP-SP75-01</a>	

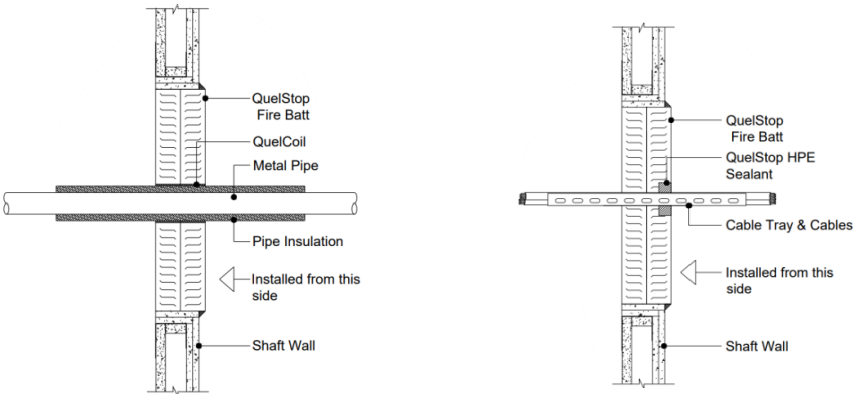
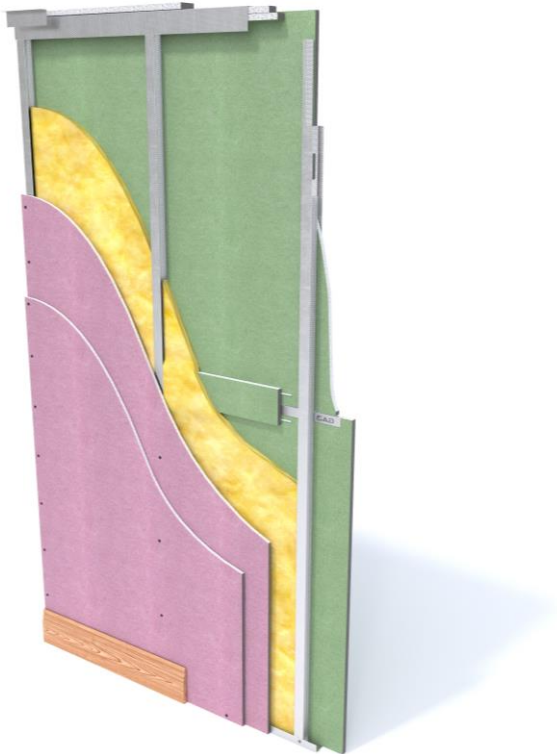
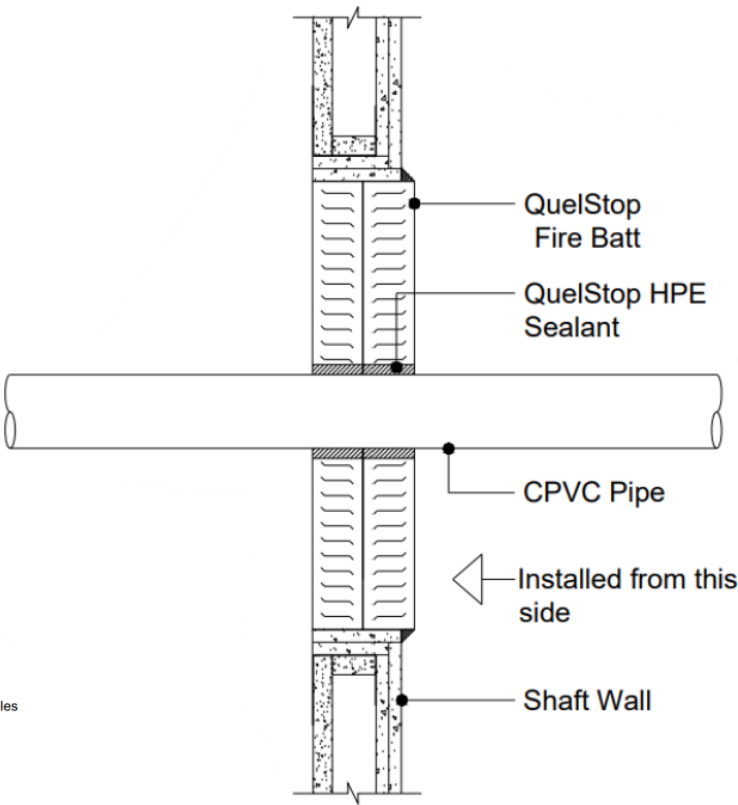


[www.specwall.com](http://www.specwall.com)  
[info@specwall.com](mailto:info@specwall.com)



# Shaftwall – Electrical and Pipe

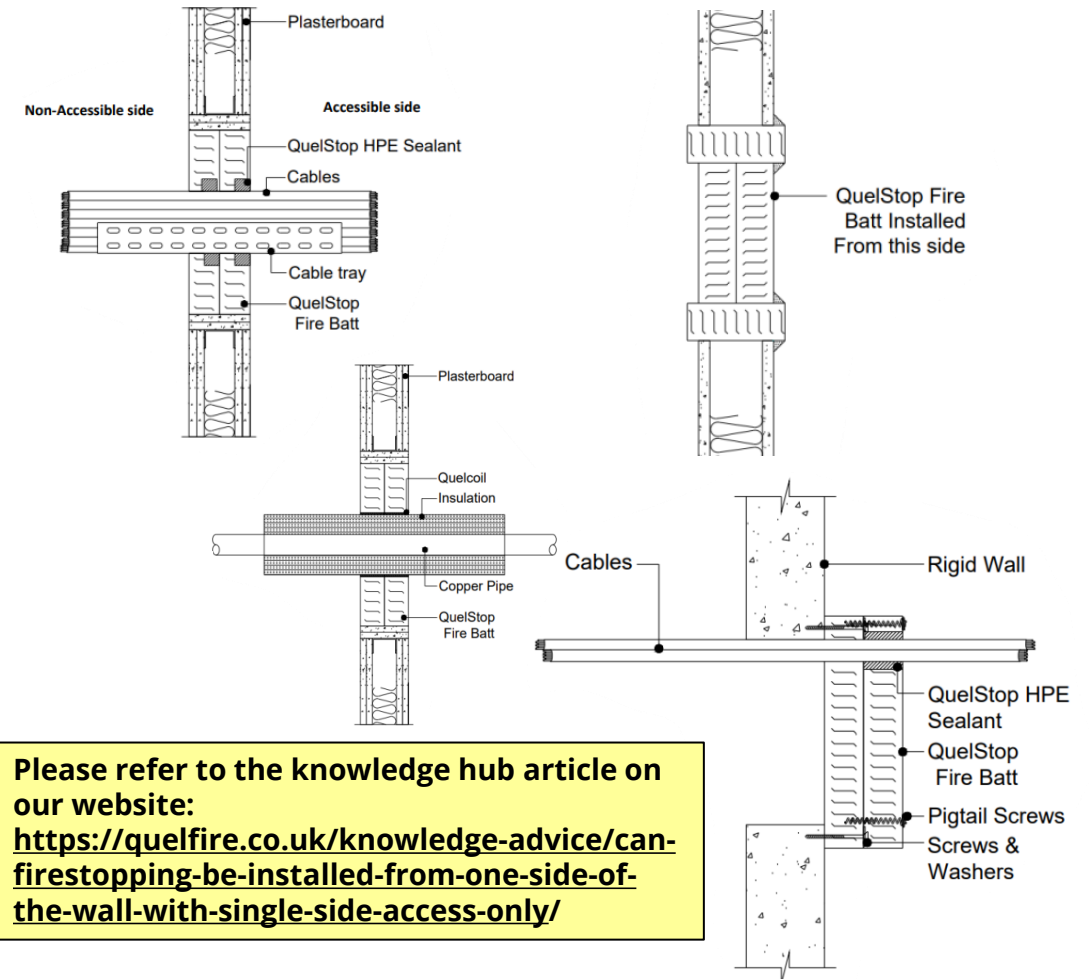
Service Penetration Type	Letterbox Batt
Cable, trays and basket	<a href="#">QB-SW85-D-02</a>
Insulated Metal Pipe	<a href="#">QB-SW85-D-04</a>
	<a href="#">QB-SW85-D-11</a>
Plastic Pipe	<a href="#">QB-SW85-D-06</a>
CPVC Sprinkler Pipe <small>Lubrizol &amp; Spears Approved</small>	<a href="#">QB-SW85-D-05</a>





# Single Side Access Only

Service Penetration Type	Direct Seal	Double Batt Seal	Pattress Batt Seal Rigid wall only
N/A – Blank Seal		<a href="#">QB-FW100-D-00C</a>	
Cable, trays & basket		<a href="#">QB-FW100-D-SS-02</a>	<a href="#">QB-RW100-P-SS-01</a>
			<a href="#">QB-RW100-P-SS-02</a>
Conduit		<a href="#">QB-FW100-D-SS-14</a>	<a href="#">QB-RW100-P-SS-17</a>
Uninsulated metal pipes	<a href="#">QSS-RW150-03</a>		<a href="#">QB-RW100-P-SS-10</a>
Insulated metal pipes		<a href="#">QB-FW100-D-SS-04</a>	
Plastic Pipe		<a href="#">QB-FW100-D-SS-06</a>	
CPVC Sprinkler Pipe Lubrizol & Spears Approved		<a href="#">QB-FW100-D-SS-05</a>	
Sleeved Gas Pipe		<a href="#">QB-FW100-D-SS-12</a>	



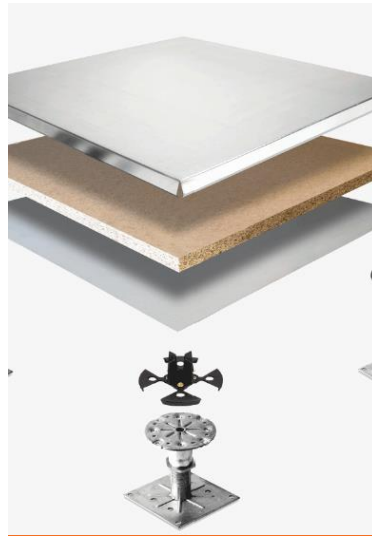
# FLOOR SUBSTRATES



Cast-In  
Solutions  
(QuelCast)



Reinforced  
Concrete Floor  
(Cast In-Situ)



Raised Access  
Floor  
(RAF)



Hollow Core  
Slab  
(Pre-Cast  
Concrete Slab)



Steel Profiled  
Deck  
(Composite  
Deck)

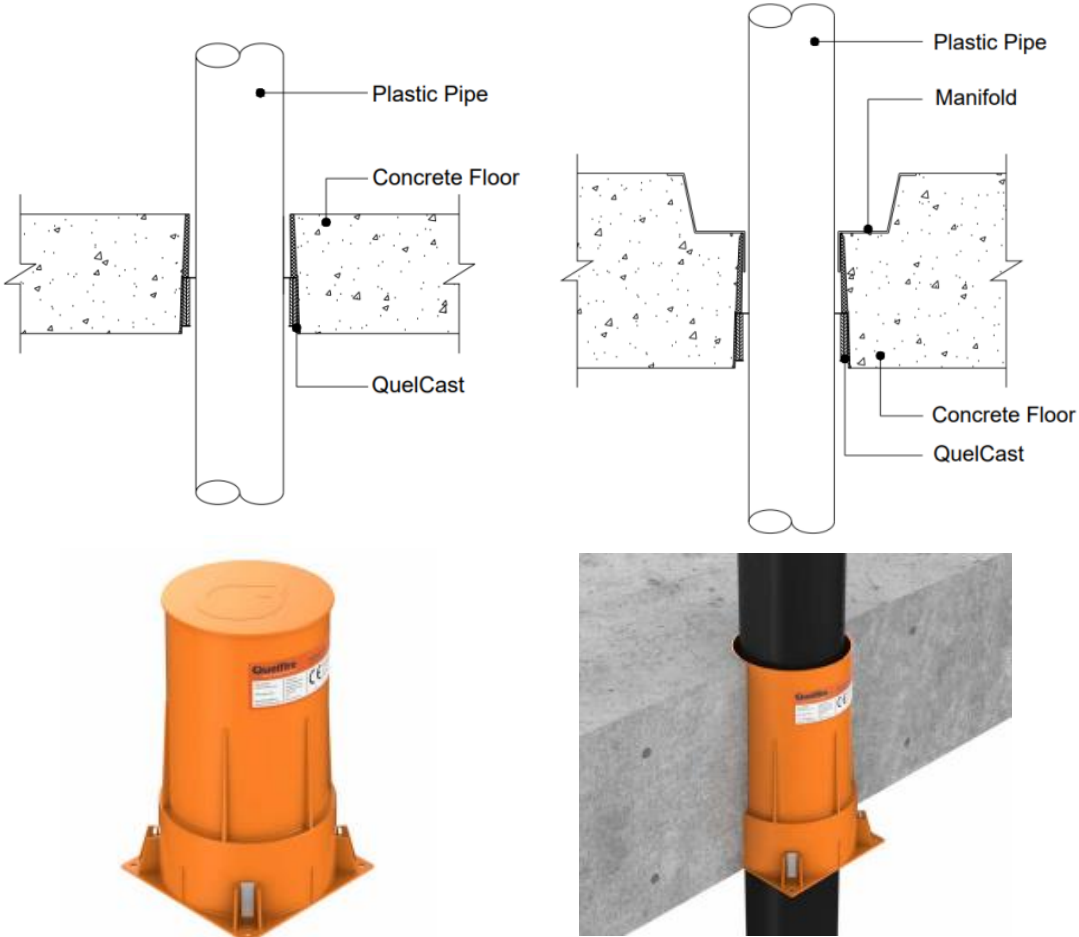


Plasterboard  
Ceiling /  
Timber Joist  
Floor

# Cast In Fire Collars - QuelCast



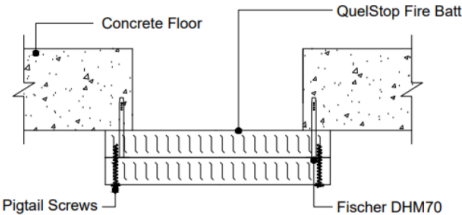
		Minimum slab depth	
Service Penetration Type		150mm	250mm
Plastic Pipe	50mm dia.	<a href="#">QC-CF150-02</a>	
	75mm dia.	<a href="#">QC-CF150-03</a>	
	110mm dia.	<a href="#">QC-CF150-01</a>	<a href="#">QC-CF250-01</a>
	110mm dia.	<a href="#">QC-CF150-03</a>	
	160mm dia.	<a href="#">QC-CF150-01</a>	
	Clusters of Plastic Pipes	<a href="#">QC-CF150-04</a>	
	With Manifold Recess Former to top of slab.		<a href="#">QC-CF250-06</a>
	With Manifold Recess Former to bottom.		<a href="#">QC-CF250-07</a>
Cables			<a href="#">QC-CF250-05</a>
Uninsulated metal pipe		<a href="#">QC-CF150-09</a>	
Blank seal / empty QuelCast		<a href="#">QC-CF150-08</a>	



# Concrete Floor – Blank Seal & Others



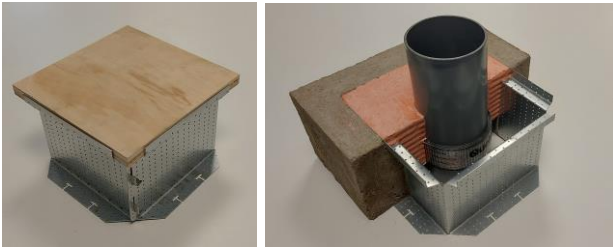
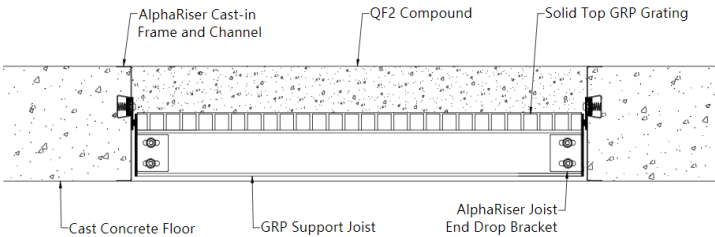
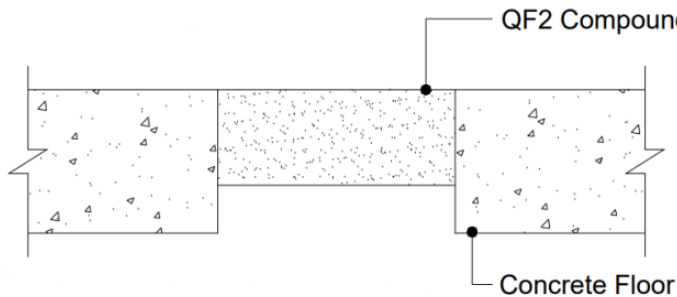
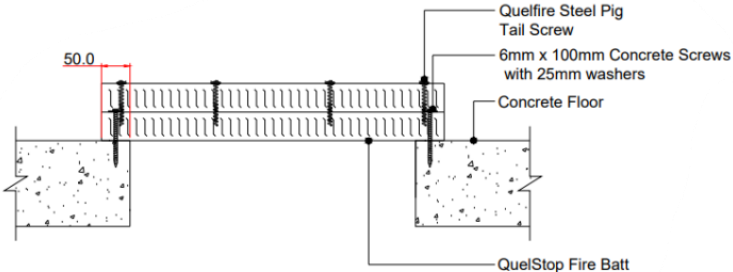
Service Penetration Type	Double Batt	Pattress Batt	QF2 Fire Protection Compound (Within floor)	QF2 Fire Protection Compound (As a pattress)
N/A – Blank Seal	<a href="#">QB-CF150-D-00</a>	<a href="#">QB-CF150-P-00</a>	<a href="#">QF2-CF150-00A</a>	<a href="#">QF2-CF150-P-00</a>



There are a number of innovative solutions for creating service riser floor apertures which are cast into position early in the project ahead of installation of the services and can then be fire sealed with Quelfire QF2 Fire Protection Compound and associated products forming part of the Quelfire System.

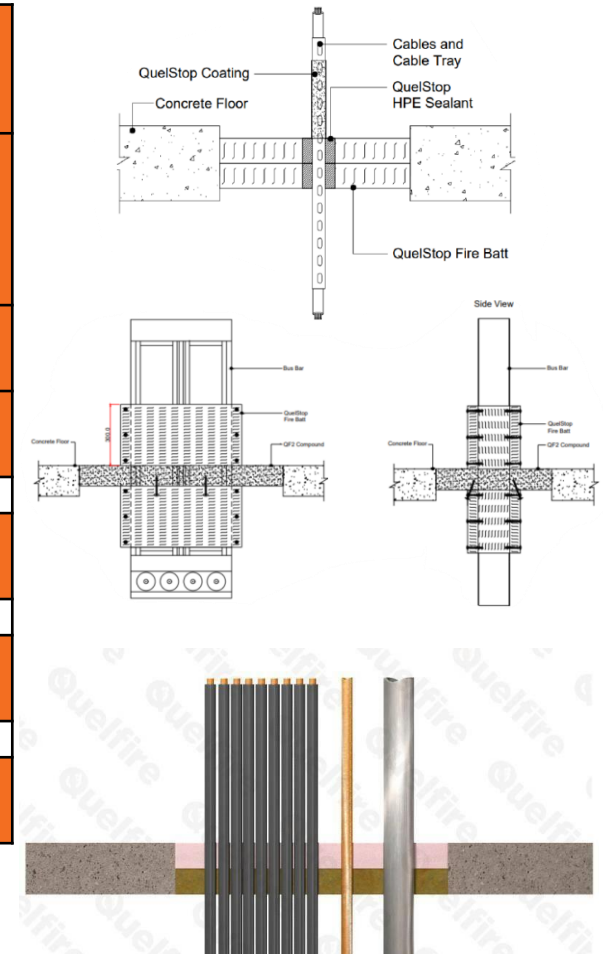
<a href="#">AlphaRiser</a>	See: <a href="http://www.comtecgrp.com/pre-fab/alphariser/">www.comtecgrp.com/pre-fab/alphariser/</a>	<a href="#">QF2-CF250-00C</a>
<a href="#">Deck Box</a>	See: <a href="http://www.firstfixformwork.co.uk">www.firstfixformwork.co.uk</a>	<a href="#">QB-CF150-00B</a>

These details can also be used in conjunction with Quelfire standard QF2 Fire Protection service penetration details, however there may be limitations on the fire rating and sizes permitted.



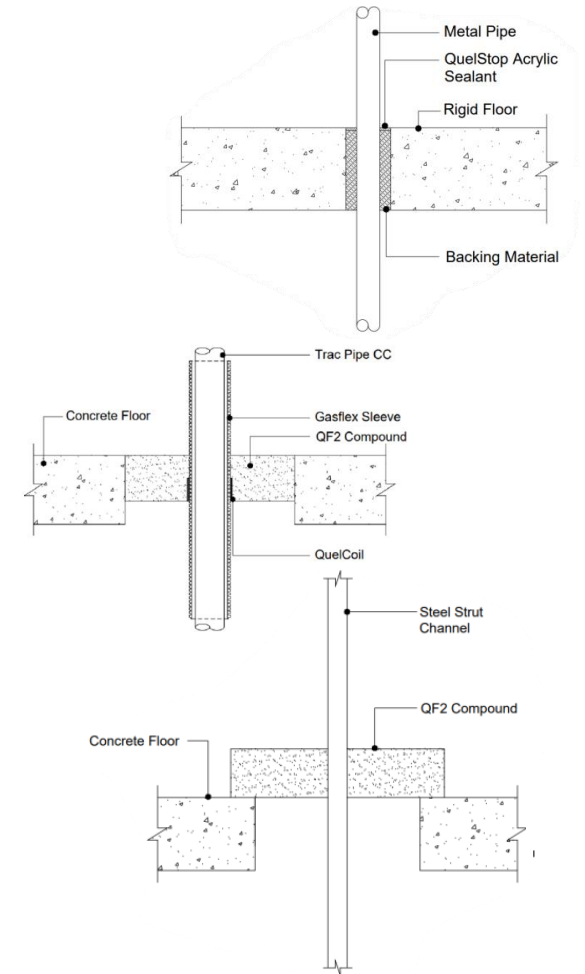
# Concrete Floor – Electrical

Service Penetration Type	Direct Seal	Batt within	Pattress Batt	Compound (within)	Compound (pattress)
Cable / bundles / trays / basket / ladder & ≤16mm dia conduit	<a href="#">QSS-CF150-01</a>	<a href="#">QB-CF150-D-01</a>	<a href="#">QB-CF150-P-01</a>	<a href="#">QF2-CF150-01</a>	<a href="#">QF2-CF150-P-01</a>
	<a href="#">HPE-CF150-06</a>	<a href="#">QB-CF150-D-02</a>	<a href="#">QB-CF150-P-02</a>	<a href="#">QF2-CF150-02</a>	
Conduit ≥16mm dia				<a href="#">QF2-CF150-14</a>	<a href="#">QF2-CF150-P-14</a>
				<a href="#">QF2-CF150-17</a>	
Trunking				<a href="#">QF2-CF150-13</a>	<a href="#">QF2-CF150-P-13</a>
Insulated Metal Pipe & Cables on a Tray				<a href="#">QF2-CF150-25</a>	
Busbar				<a href="#">QF2-CF150-35</a>	



# Concrete Floor – Metallic Pipe & Strut

Service Penetration Type	Direct Seal	Batt within	Pattress Batt	Compound (within)	Compound (pattress)
Uninsulated Metal Pipe	<a href="#">QSS-CF150-02</a>	<a href="#">QB-CF150-D-10</a>	<a href="#">QB-CF150-P-10</a>	<a href="#">QF2-CF150-10</a>	<a href="#">QF2-CF150-P-10</a>
	<a href="#">QSS-CF150-03</a>			<a href="#">QF2-CF150-23</a>	<a href="#">QF2-CF150-P-23</a>
Insulated Metal Pipe	<a href="#">HPE-CF150-05</a>			<a href="#">QF2-CF150-04</a>	<a href="#">QF2-CF150-P-04</a>
				<a href="#">QF2-CF150-11</a>	<a href="#">QF2-CF150-P-11</a>
Insulated Metal Pipe & cables on a tray				<a href="#">QF2-CF150-25</a>	
Sleeved Gas Pipe				<a href="#">QF2-CF150-12</a>	<a href="#">QF2-CF150-P-12</a>
Steel strut				<a href="#">QF2-CF150-26</a>	<a href="#">QF2-CF150-P-26</a>

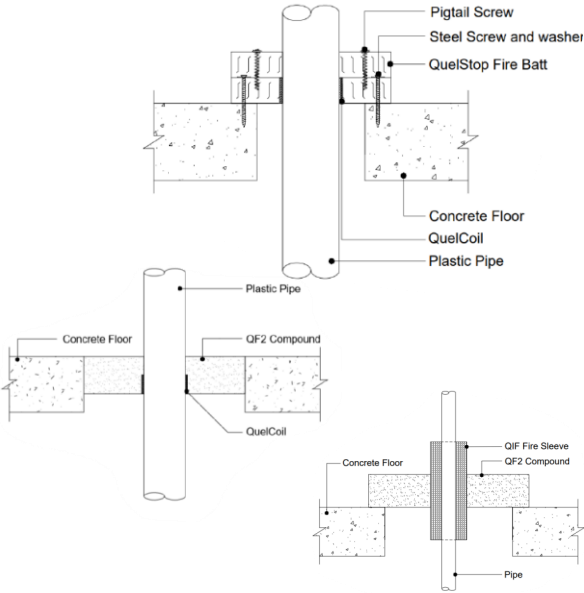




# Concrete Floor – Plastic Pipe



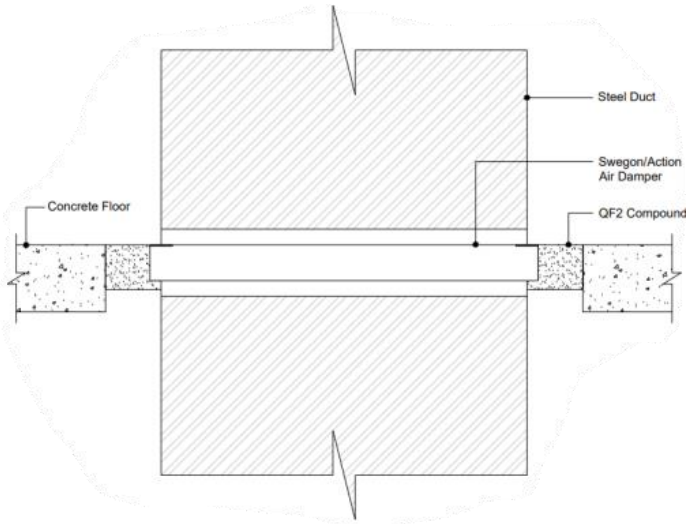
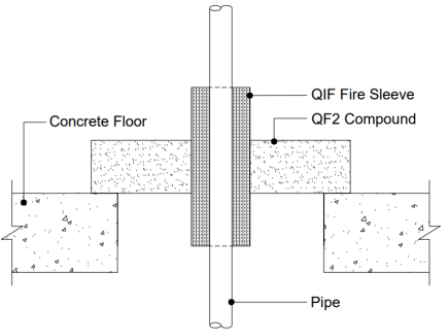
Service Penetration Type	Direct Seal	Batt within	Pattress Batt	Compound (within)	Compound (pattress)
Plastic Pipe	<a href="#">QWR-CF150-01</a>	<a href="#">QB-CF150-D-06</a>	<a href="#">QB-CF150-P-06</a>	<a href="#">QF2-CF150-06</a>	<a href="#">QF2-CF150-P-06</a>
	<a href="#">QWW-CF150-01</a>	<a href="#">QB-CF150-D-07</a>	<a href="#">QB-CF150-P-07</a>	<a href="#">QF2-CF150-07</a>	
	<a href="#">HPE-CF150-01</a>	<a href="#">QB-CF150-D-08</a>	<a href="#">QB-CF150-P-08</a>	<a href="#">QF2-CF150-08</a>	<a href="#">QF2-CF150-P-08</a>
	<a href="#">QIF-CF150-01</a>			<a href="#">QF2-CF150-09</a>	<a href="#">QF2-CF150-P-09</a>
Refer also to QuelCast Cast In Fire Collar details on page 31.					
Plastic Pipe (pipe coupling)	<a href="#">QWR-CF150-07</a>				
Plastic Pipe (large dia.)	<a href="#">QWX-CF150-01</a>			<a href="#">QF2-CF150-27</a>	
Plastic Vent Duct Pipe	<a href="#">QWR-CF150-06</a>				
Plastic Shower Gully	<a href="#">HPE-CF200-28</a>		<a href="#">QB-CF200-P-28</a>		
Insulated Plastic Pipe – Python Pipe				<a href="#">QF2-CF150-29</a>	



# Concrete Floor – CPVC & Damper



Service Penetration Type	Direct Seal	Batt within	Pattress Batt	Compound (within)	Compound (pattress)
CPVC Sprinkler Pipe <small>Lubrizol &amp; Spears Approved</small>	<a href="#">QIF-CF150-01</a>	<a href="#">QB-CF150-D-08</a>	<a href="#">QB-CF150-P-08</a>	<a href="#">QF2-CF150-05</a>	<a href="#">QF2-CF150-P-05</a>
				<a href="#">QF2-CF150-24</a>	<a href="#">QF2-CF150-P-24</a>
Damper				<a href="#">QF2-CF150-31</a>	



## Check out the FAQ's in our "Knowledge Hub"

### Considerations when firestopping CPVC pipes



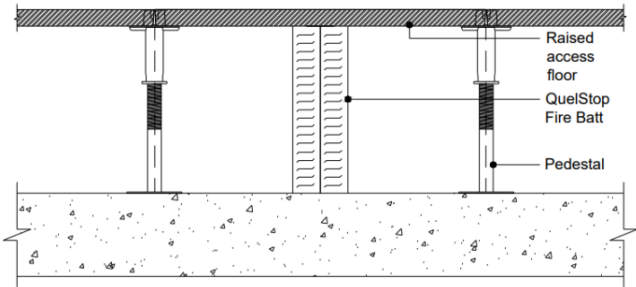
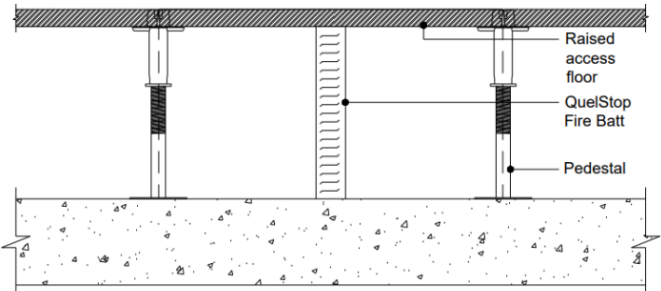
QuelStop HPE Sealant has been approved to be used with both BlazeMaster and Spears CPVC sprinkler pipes. It has also been tested in a wide range of applications from single-skin plasterboard walls to over-sized holes and formed letterboxes.





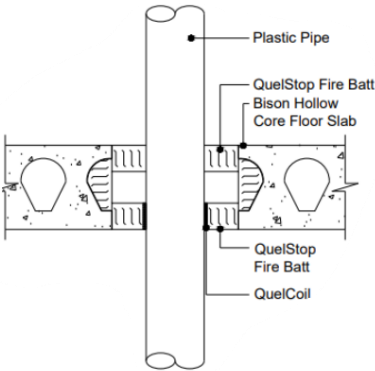
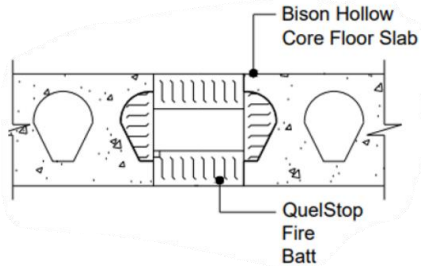
# Raised Floor Systems

Raised Floor System	QuelStop Fire Batt
Single QuelStop Fire Batt – Blank Seal	<a href="#">QB-RF00-S-00</a>
This detail can be used in conjunction with Quelfire’s <a href="#">single</a> QuelStop Fire Batt service penetration range	<a href="#">Click HERE to view</a>
Double QuelStop Fire Batt – Blank Seal	<a href="#">QB-RF00-D-00</a>
This detail can be used in conjunction with Quelfire’s <a href="#">double</a> QuelStop Fire Batt service penetration range	<a href="#">Click HERE to view</a>



# Hollow Core Slab – Intro & Blank Seals

Service Penetration Type	QuelStop Fire Batt solutions	QF2 Fire Protection Compound solutions
N/A – Blank Seal	<a href="#">QB-HC150-D-00</a>	<a href="#">QF2-HC150-00</a>
Plastic Pipe	<a href="#">QB-HC150-D-06</a>	See following pages
Full list of QF2 Fire Protection Compound solutions for various services on the following pages.		




**Check out the FAQ's in our "Knowledge Hub"**

**Can I use a fire collar on a hollow core slab?** Tested Detail Queries

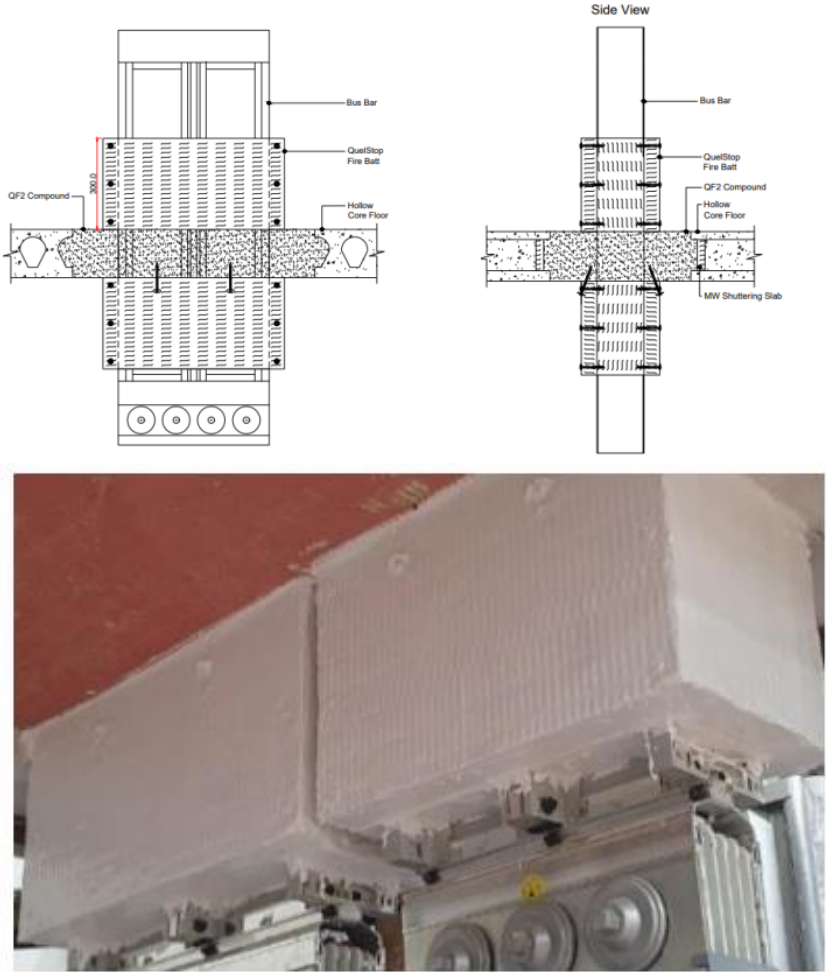
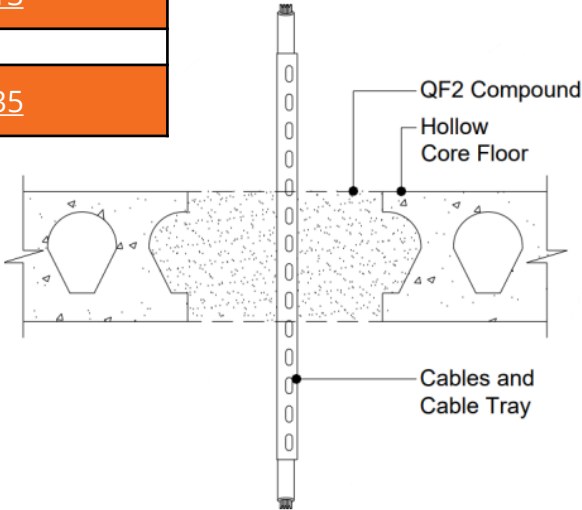
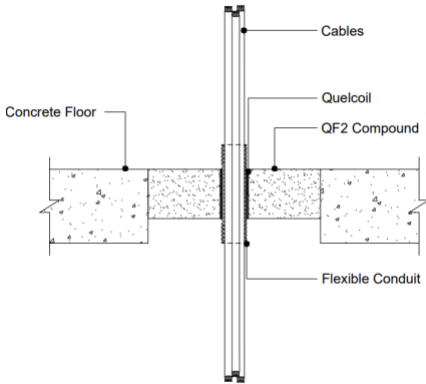
Whilst it is logical to consider a hollow core concrete slab as similar to a traditional reinforced concrete floor, manufacturers of hollow core slabs have very strict requirements around the use of mechanical fixings which can potentially affect the structural integrity of the slab.

On this basis, Quelfire have carried out specific testing with hollow core slabs using non-mechanical fixing solutions, therefore we would not recommend the use of a fire collar.



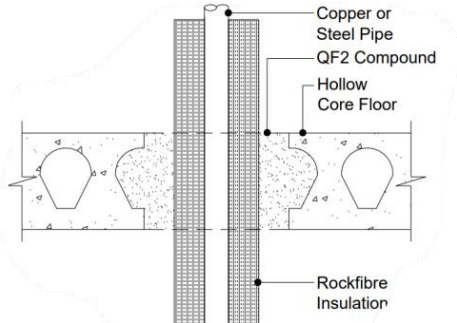
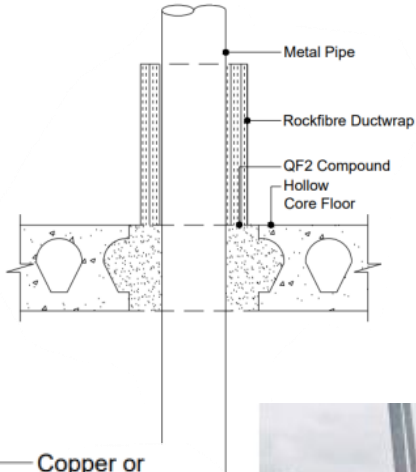
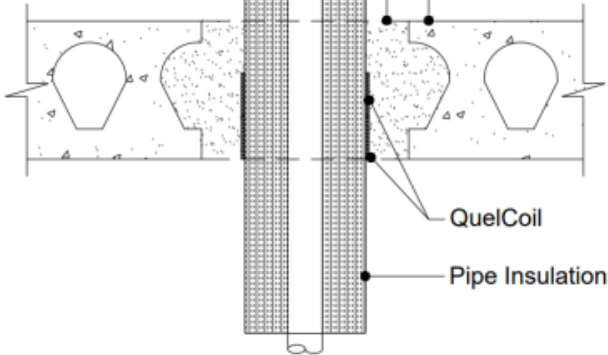
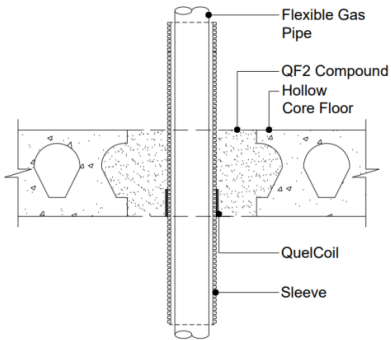
# Hollow Core Slab – Electrical

Service Penetration Type	QF2 Fire Protection Compound
Cable / bundles / trays / basket / ladder & ≤16mm dia conduit	<a href="#">QF2-HC150-01</a>
	<a href="#">QF2-HC150-02</a>
Conduit ≥16mm dia	<a href="#">QF2-HC150-14</a>
Trunking	<a href="#">QF2-HC150-13</a>
Busbar	<a href="#">QF2-HC150-35</a>



# Hollow Core Slab – Metal Pipes

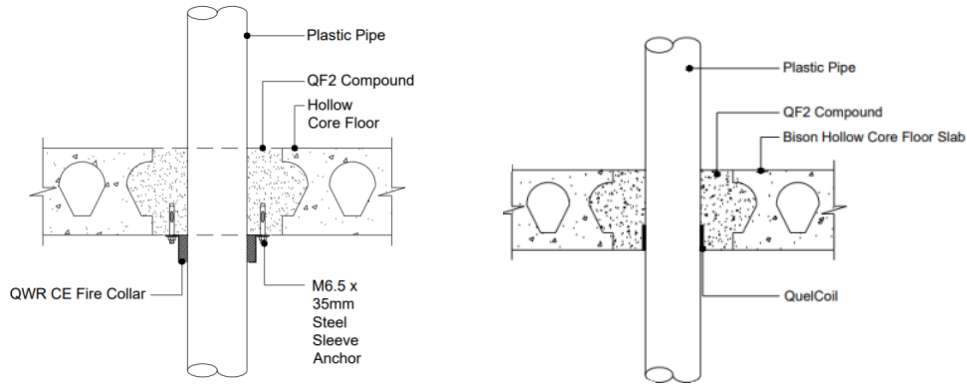
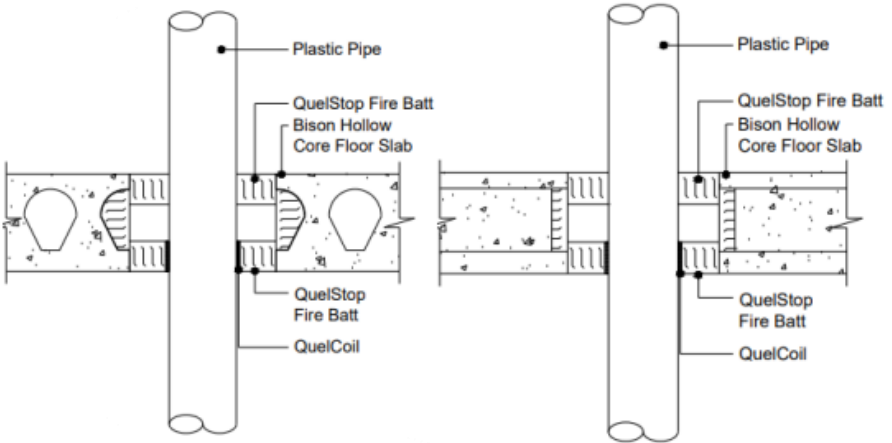
Service Penetration Type	QF2 Fire Protection Compound
Uninsulated Metal Pipe	<a href="#">QF2-HC150-23</a>
	<a href="#">QF2-HC150-10</a>
Insulated Metal Pipe	<a href="#">QF2-HC150-04</a>
	<a href="#">QF2-HC150-11</a>
Sleeved Gas Pipe	<a href="#">QF2-HC150-12</a>
Steel Strut	<a href="#">QF2-HC150-26</a>





# Hollow Core Slab – Plastic Pipe & CPVC

Service Penetration Type	QF2 Fire Protection Compound
Plastic Pipe	<a href="#">QF2-HC150-06</a>
	<a href="#">QF2-HC150-07</a>
	<a href="#">QF2-HC150-08</a>
	<a href="#">QF2-HC150-09</a>
Plastic Pipe (large diameter)	<a href="#">QF2-HC150-27</a>
CPVC Sprinkler Pipe <small>Lubrizol &amp; Spears Approved</small>	<a href="#">QF2-HC150-24</a>



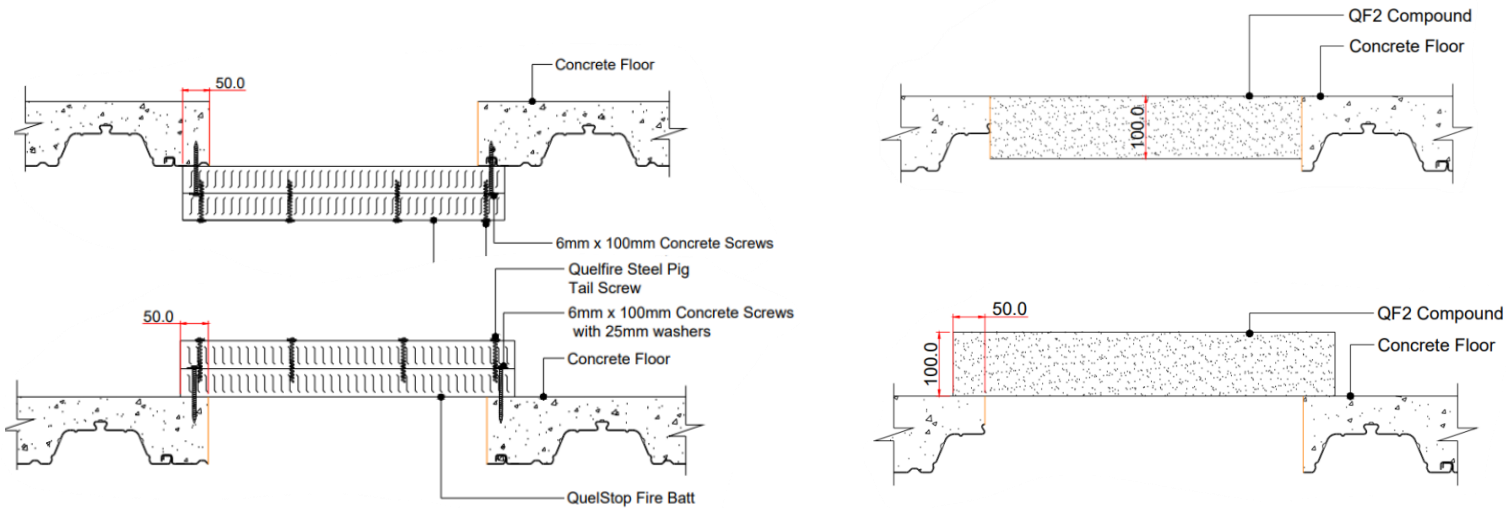
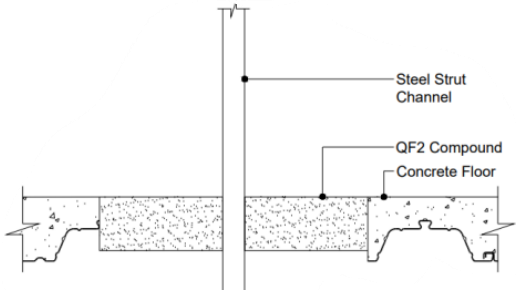
Please refer to the knowledge hub article on our website: <https://quelfire.co.uk/knowledge-advice/can-i-use-a-fire-collar-on-a-hollow-core-slab/>



# Steel Profiled Deck – Intro & Blank Seals



Service Penetration Type	Direct Seal	Pattress Batt	Compound (Within)	Compound (Pattress)
Blank Seal		<a href="#">QB-PD45-P-00</a>	<a href="#">QF2-PD45-00</a>	<a href="#">QF2-PD45-P-00</a>
Steel Strut			<a href="#">QF2-PD45-26</a>	



## Check out the FAQ's in our "Knowledge Hub"

Search the knowledge hub...

### What is the best firestopping solution to use around plastic pipes in a profiled deck?

Tested Detail Queries

According to the building regulations 'Approved Document B', service penetrations through fire compartment floors need to be equipped with firestopping solution to prevent the spread of fire. In case of plastic pipes penetrating fire compartment floors, there are three solutions available; fire collars, fire wraps and cast in fire collars. When the fire compartment floor is a profiled metal decking, which solution is ideal?

#### Intumescent fire collar

Intumescent fire collars need to be fitted around the pipe so that they are fixed to a flat surface. In case of profiled decking, depending on the size of the pipe and the details of the metal decking, it is near impossible to find an area that allows this.

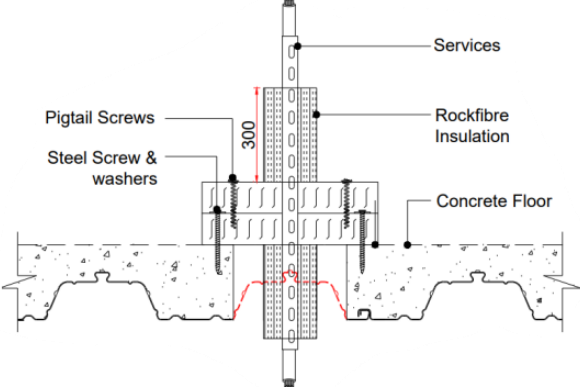
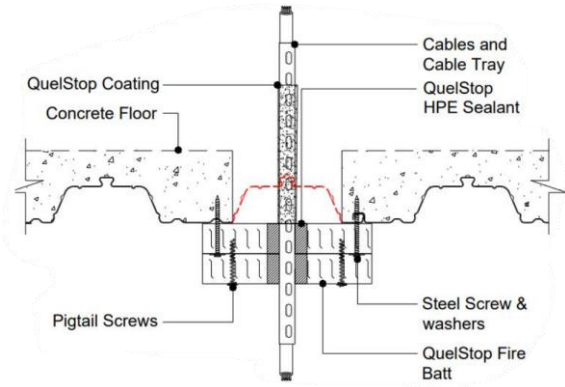
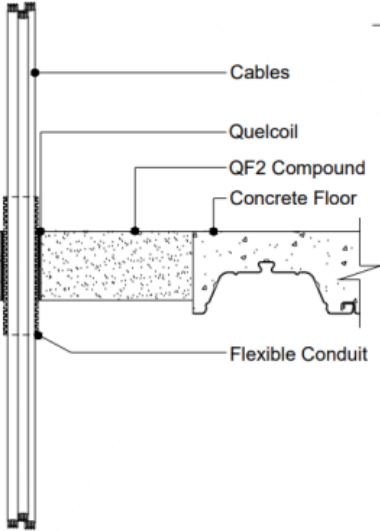
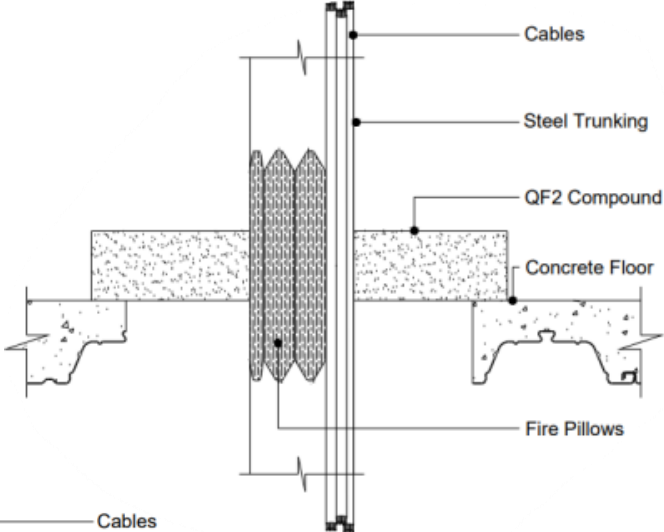
#### Intumescent pipe wrap

When using intumescent pipe wraps, the coordination of different trades (diamond driller, M&E and firestopper) is required and the H&S issues associated with drilling a hole need to be considered. It is also critical that the correct-sized hole is drilled, otherwise shuttering for compound to a curve can pose serious challenges. This is



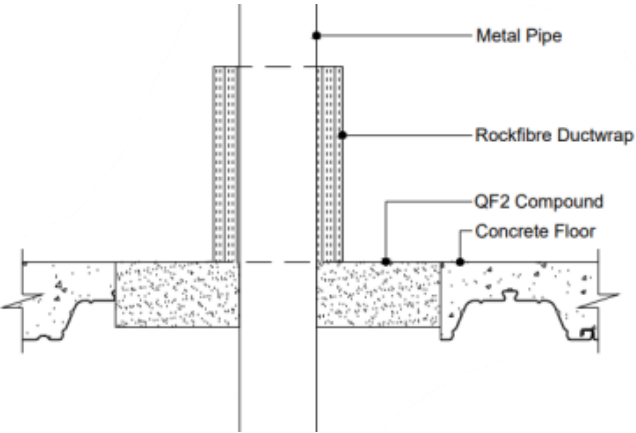
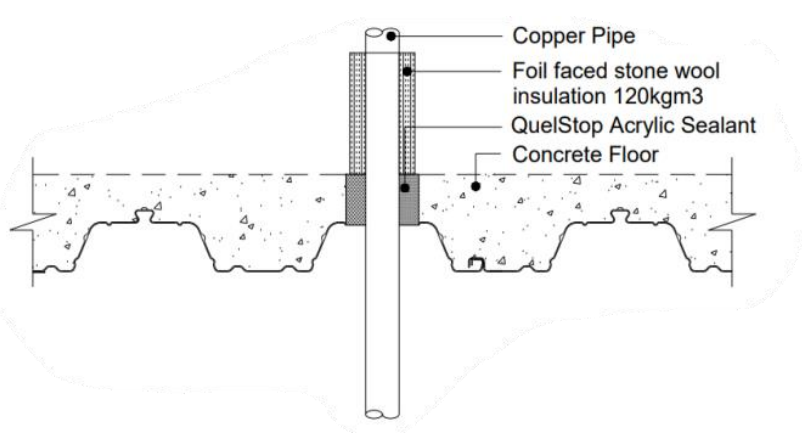
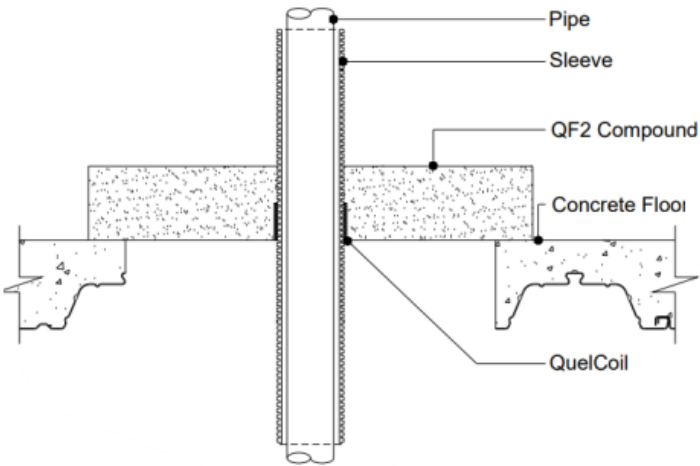
# Steel Profiled Deck – Electrical

Service Penetration Type	Direct Seal	Pattress Batt	Compound (Within)	Compound (Pattress)
Cable / bundles / trays / basket / ladder & ≤16mm dia conduit		<a href="#">QB-PD45-P-01</a>	<a href="#">QF2-PD45-01</a>	<a href="#">QF2-PD45-P-01</a>
		<a href="#">QB-PD45-P-02</a>	<a href="#">QF2-PD45-02</a>	
Conduit ≥16mm dia			<a href="#">QF2-PD45-14</a>	<a href="#">QF2-PD45-P-14</a>
Trunking			<a href="#">QF2-PD45-13</a>	<a href="#">QF2-PD45-P-13</a>
Busbar			<a href="#">QF2-PD45-35</a>	



# Steel Profiled Deck – Metal Pipes

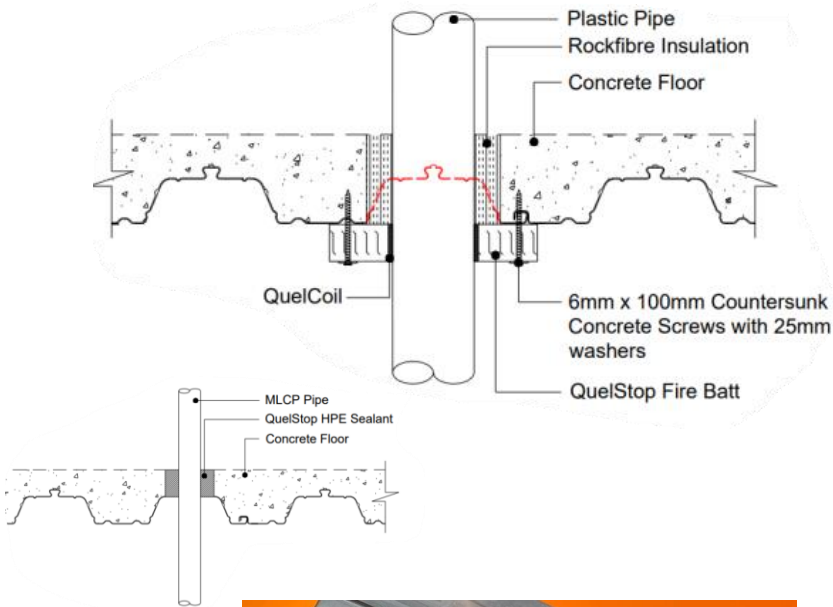
Service Penetration Type	Direct Seal	Pattress Batt	Compound (Within)	Compound (Pattress)
Uninsulated Metal Pipe	<a href="#">QSS-PD60-02</a>	<a href="#">QB-PD45-P-10</a>	<a href="#">QF2-PD45-10</a>	<a href="#">QF2-PD45-P-10</a>
			<a href="#">QF2-PD45-23</a>	<a href="#">QF2-PD45-P-23</a>
Insulated Metal Pipe			<a href="#">QF2-PD45-04</a>	<a href="#">QF2-PD45-P-04</a>
			<a href="#">QF2-PD45-11</a>	<a href="#">QF2-PD45-P-11</a>
Sleeved Gas Pipe			<a href="#">QF2-PD45-12</a>	<a href="#">QF2-PD45-P-12</a>



# Steel Profiled Deck – Plastic & CPVC Pipe

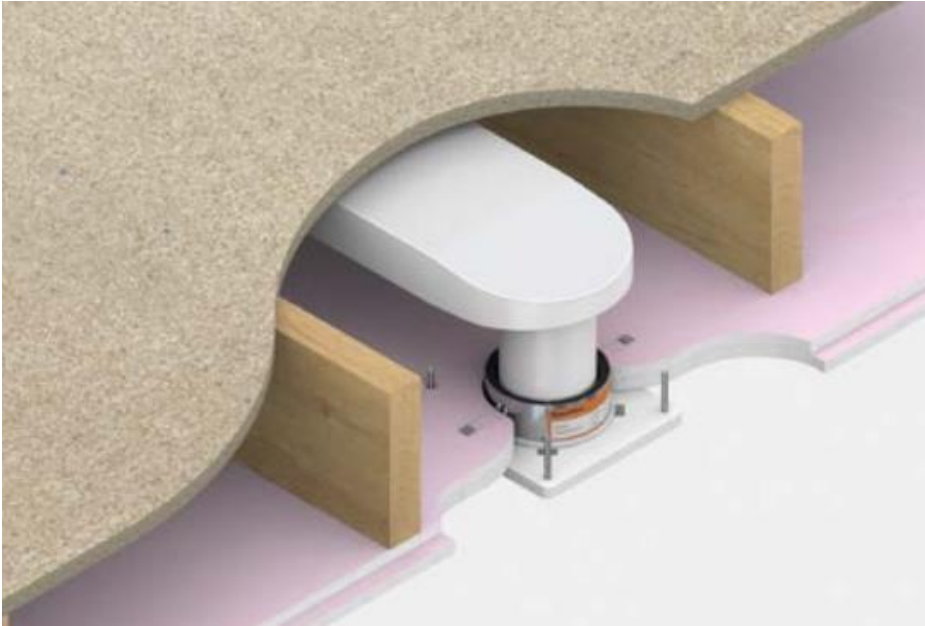
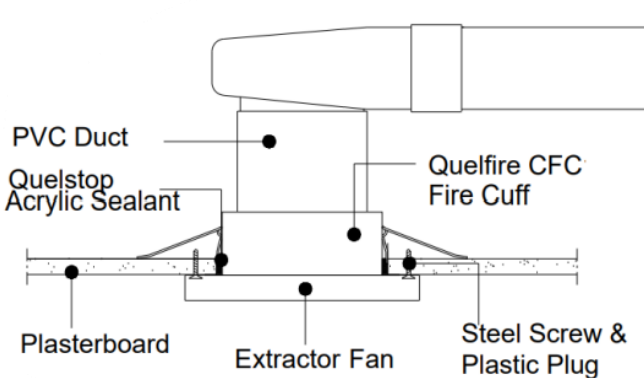
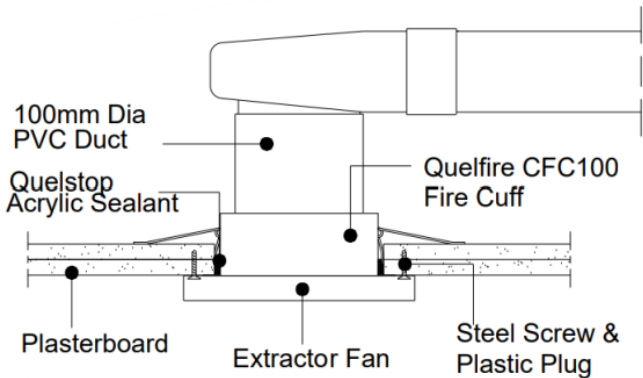


Service Penetration Type	Direct Seal	Pattress Batt	Compound (Within)	Compound (Pattress)
Blank Seal		<a href="#">QB-PD45-P-00</a>	<a href="#">QF2-PD45-00A</a>	<a href="#">QF2-PD45-00B</a>
Plastic Pipe		<a href="#">QB-PD45-P-06</a>	<a href="#">QF2-PD45-06</a>	<a href="#">QF2-PD45-P-06</a>
		<a href="#">QB-PD45-P-07</a>	<a href="#">QF2-PD45-07</a>	
		<a href="#">QB-PD45-P-08</a>	<a href="#">QF2-PD45-08</a>	<a href="#">QF2-PD45-P-08</a>
			<a href="#">QF2-PD45-09</a>	<a href="#">QF2-PD45-P-09</a>
Plastic Pipe (Large dia.)			<a href="#">QF2-PD45-27</a>	
MLCP (plastic) pipe	<a href="#">HPE-PD60-01</a>	<a href="#">QB-PD45-P-08</a>		
CPVC Sprinkler Pipe Lubrizol & Spears Approved	<a href="#">HPE-PD60-02</a>		<a href="#">QF2-PD45-05</a>	<a href="#">QF2-PD45-P-05</a>
			<a href="#">QF2-PD45-24</a>	<a href="#">QF2-PD45-P-24</a>



# Ceiling / Timber Floor – Extract Fan

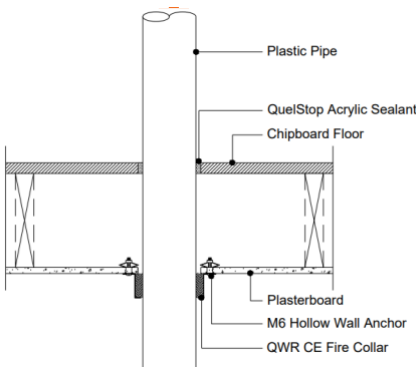
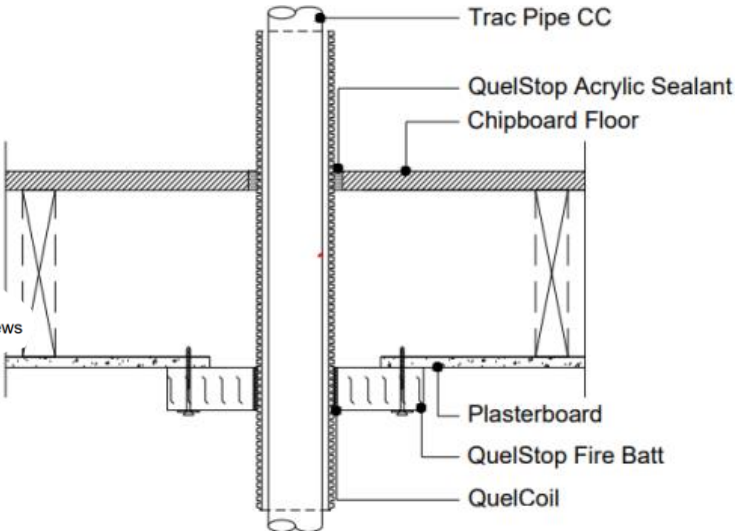
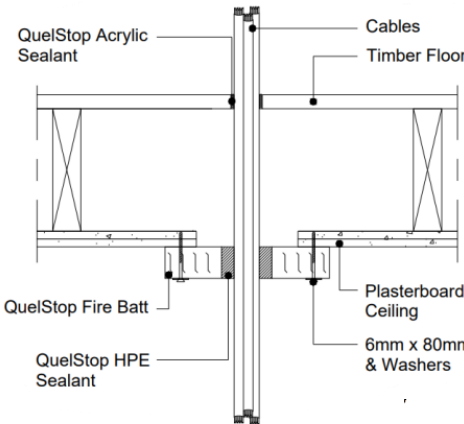
Service Penetration Type	Direct Seal
Ceiling Fan	<a href="#">CFC-PC230-01</a>
	<a href="#">CFC-PC242-01</a>
	<a href="#">CFC-PC315-01</a>



# Ceiling / Timber Floor – Electrical & Pipe



Service Penetration Type	Direct Seal	Pattress Batt
Cable		<a href="#">QB-PC230-P-02</a>
		<a href="#">QB-PC242-P-02</a>
Plastic Pipe	<a href="#">QWR-PC230-01</a>	<a href="#">QB-PC230-P-06</a>
	<a href="#">QWR-PC242-01</a>	<a href="#">QB-PC230-P-08</a>
		<a href="#">QB-PC242-P-06</a>
		<a href="#">QB-PC242-P-07</a>
CPVC Sprinkler Pipe <small>Lubrizol &amp; Spears Approved</small>		<a href="#">QB-PC230-P-05</a>
Insulated Plastic Pipe		<a href="#">QB-PC230-P-20</a>
Insulated Metal Pipe		<a href="#">QB-PC230-P-03</a>
Sleeved Gas Pipe		<a href="#">QB-PC230-P-12</a>





# OTHER TYPES OF SEALS



## Head of Wall (HoW):

- With / without movement
- With / without batt seals



## Linear Joint Seals:

- Walls and Floors
- Fire Door Frames



## Putty Pads for Electric Sockets:

- Single, Double & Media Panel Sockets

*Click on the relevant image above to go straight to the relevant section of standard details.*



# Head of Wall - Batt Seals

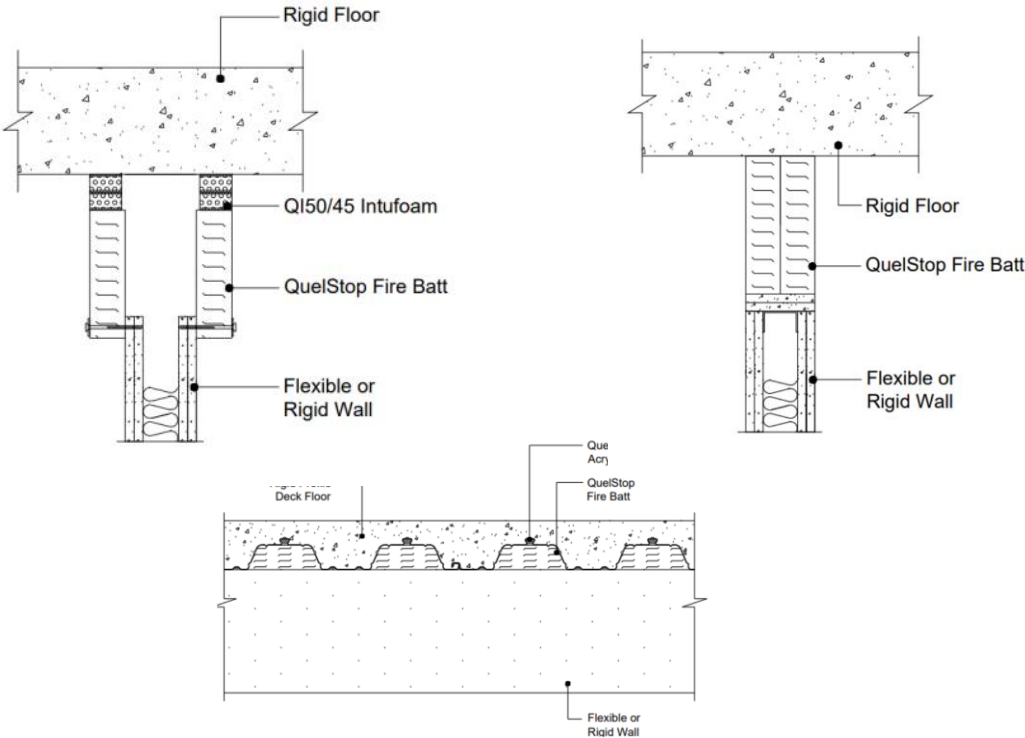
Head of Wall details can potentially be used in conjunction with the matching service penetration batt details.

Please note there are a number of additional considerations such as the structural stability of the wall, the maximum aperture size and the fire rating is limited.

Refer to the individual documents for more detail.

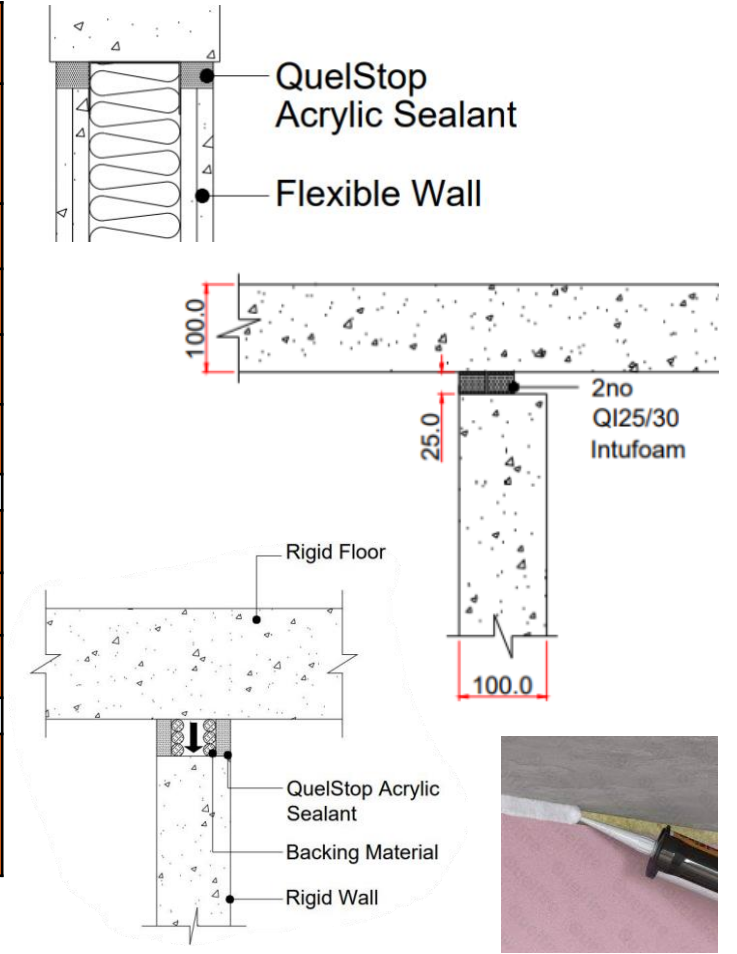
Substrate Type	Double Batt
Rigid (Concrete) wall ≥100mm to concrete floor	<a href="#">QB-RW100-D-HOW-01</a>
Plasterboard wall ≥100mm to concrete floor	<a href="#">QB-FW100-D-HOW-01</a>
Plasterboard wall ≥100mm to concrete floor – with deflection (Intufoam)	<a href="#">QB-FW100-D-HOW-03</a>
Plasterboard wall ≥100mm to steel profiled deck floor	<a href="#">QB-FW100-D-HOW-02</a>

	Pattress (Face Fix) Batt
Plasterboard wall ≥75mm to concrete floor	<a href="#">QB-FW75-P-HOW-01</a>
Plasterboard wall ≥75mm to concrete floor – with deflection (Intufoam)	<a href="#">QB-FW75-P-HOW-04</a>
Plasterboard wall ≥100mm to concrete floor	<a href="#">QB-FW100-P-HOW-01</a>
Plasterboard wall ≥100mm to concrete floor – with deflection (Intufoam)	<a href="#">QB-FW100-P-HOW-04</a>



# Head of Wall – Linear Joint Seals

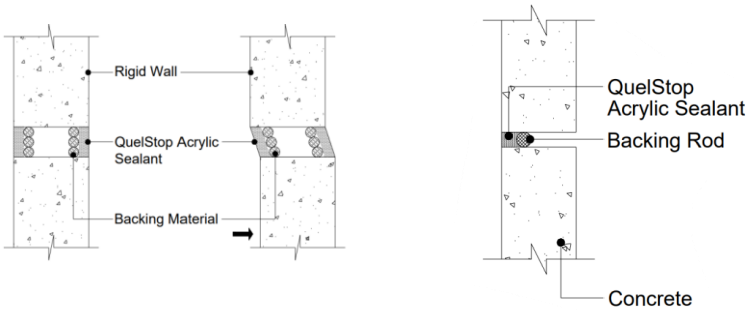
QuelStop Intumescent Acrylic Sealant	No movement	Allowing for movement
Plasterboard wall ≥120mm to underside of concrete soffit (headtrack seal)	<a href="#">QSS-LJ-T-01</a>	
Concrete wall ≥150mm to underside of concrete	<a href="#">QSS-LJ-T-02</a>	<a href="#">QSS-LJ-T-M-01</a>
		<a href="#">QSS-LJ-T-M-02</a>
Concrete wall ≥150mm to underside of steel	<a href="#">QSS-LJ-T-03</a>	
Concrete wall ≥150mm to underside of timber	<a href="#">QSS-LJ-T-04</a>	
Quelfire Intufoam	Allowing for movement	
Concrete wall ≥100mm to underside of concrete	<a href="#">QI-LJ-T-02</a>	
Concrete wall ≥150mm to underside of concrete	<a href="#">QI-LJ-T-01</a>	
For gaps larger than the scope of the details on this page you may also wish to consider our other QuelStop Fire Batt and Intufoam details in the “Head of Wall” section on the previous page.		



# Linear Joint Seals in Walls

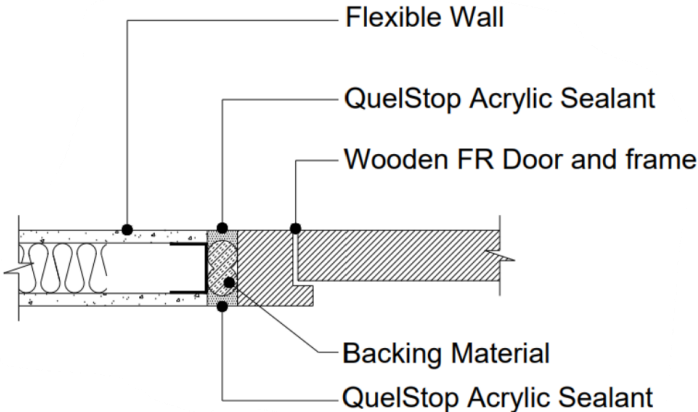
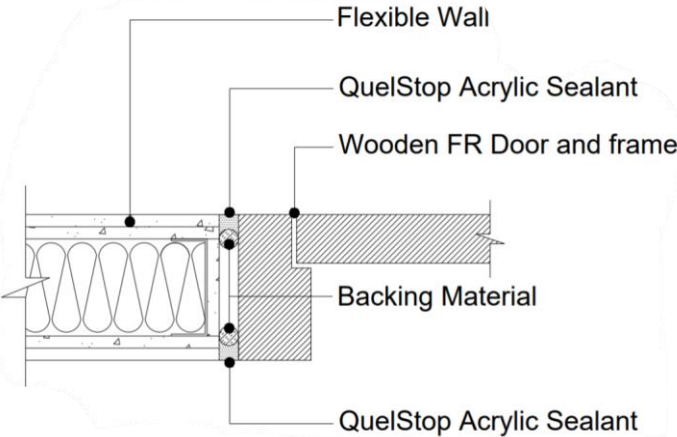
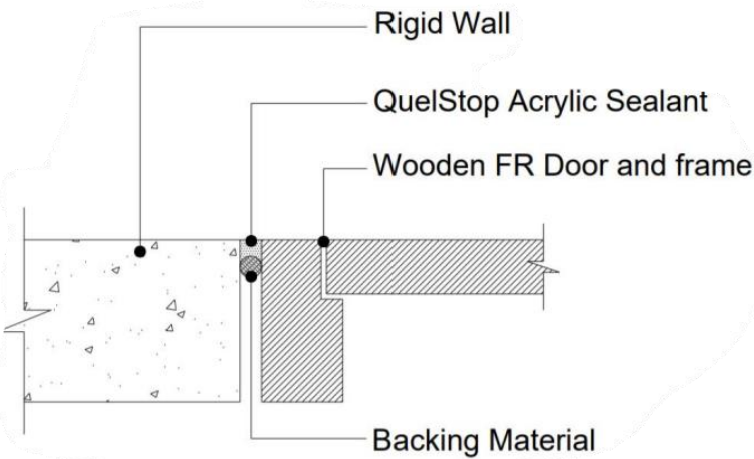


QuelStop Intumescent Acrylic Sealant	No movement	Allowing for movement
Plasterboard wall ≥75mm	<a href="#">QSS-LJ-V-02</a>	
Plasterboard wall ≥120mm	<a href="#">QSS-LJ-V-01</a>	
Concrete wall ≥100mm	<a href="#">QSS-LJ-V-03</a>	
Concrete wall ≥150mm	<a href="#">QSS-LJ-V-06</a>	<a href="#">QSS-LJ-V-M-01</a>
		<a href="#">QSS-LJ-V-M-02</a>
Concrete wall ≥100mm to steel	<a href="#">QSS-LJ-V-04</a>	
Concrete wall ≥150mm to steel	<a href="#">QSS-LJ-V-07</a>	
Concrete wall ≥100mm to timber	<a href="#">QSS-LJ-V-05</a>	
Concrete wall ≥150mm to timber	<a href="#">QSS-LJ-V-08</a>	
Quelfire Intufoam	Allowing for movement	
Concrete wall ≥100mm	<a href="#">QI-LJ-V-01</a>	



# Linear Joint Seals – Door Frames

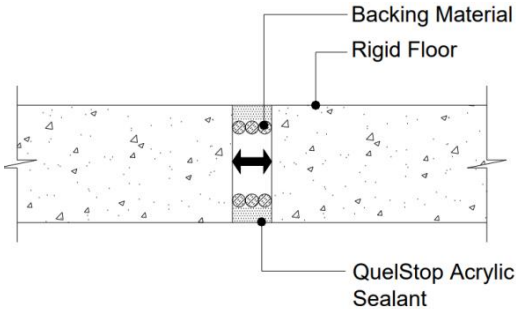
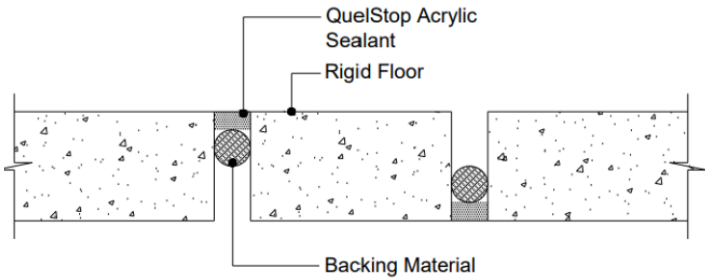
QuelStop Acrylic Sealant to door frames	Detail
Wooden door frame in rigid wall	<a href="#">QSS-RW100-LJ-01</a>
Wooden door frame in rigid wall	<a href="#">QSS-RW100-LJ-02</a>
Wooden door frame in plasterboard wall	<a href="#">QSS-FW75-LJ-01</a>
Wooden door frame in plasterboard wall	<a href="#">QSS-FW100-LJ-01</a>



# Linear Joint Seals in Floors

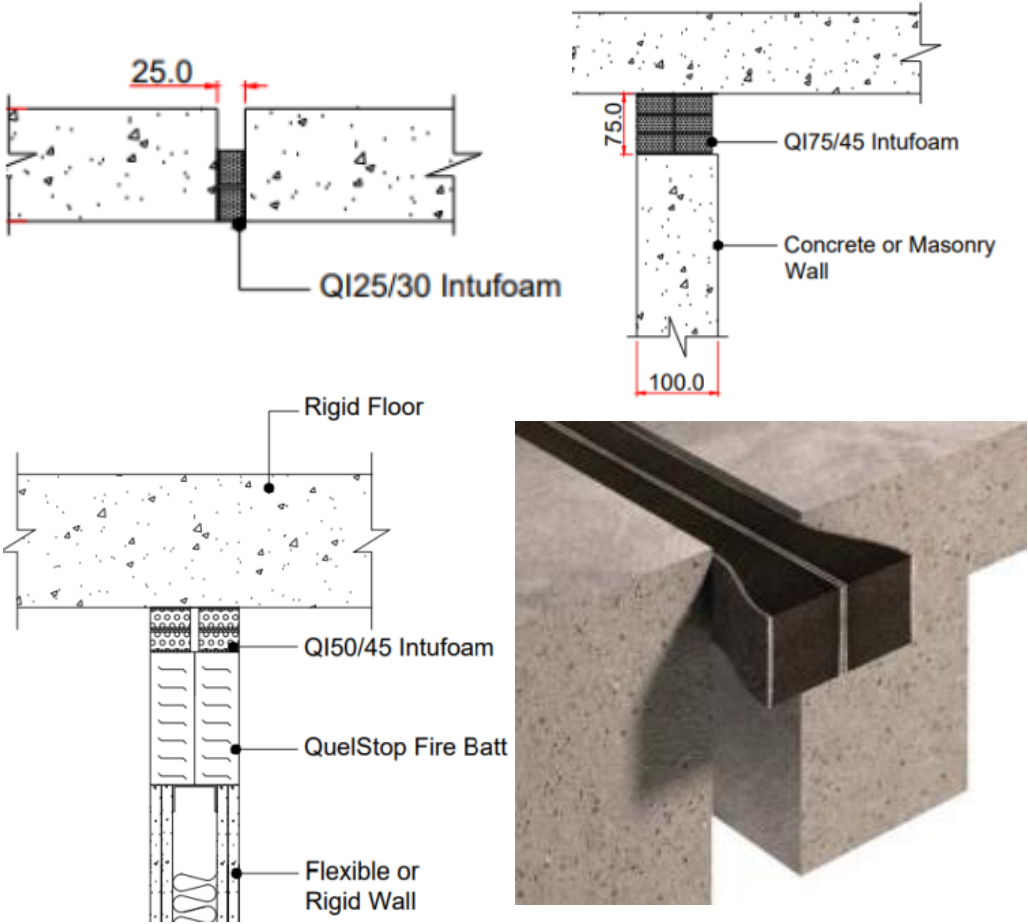


QuelStop Intumescent Acrylic Sealant	No movement	Allowing for movement
Concrete to gypsum board	<a href="#">QSS-LJ-H-01</a>	
Concrete floor ≥150mm to concrete floor	<a href="#">QSS-LJ-H-02</a>	<a href="#">QSS-LJ-H-M-01</a>
Concrete floor ≥150mm to concrete floor		<a href="#">QSS-LJ-H-M-02</a>
Concrete floor ≥150mm to steel	<a href="#">QSS-LJ-H-03</a>	
Concrete floor ≥150mm to timber	<a href="#">QSS-LJ-H-04</a>	
Quelfire Intufoam	Allowing for movement	
Concrete floor ≥100mm to concrete floor	<a href="#">QI-LJ-H-02</a>	
Concrete floor ≥150mm to concrete floor	<a href="#">QI-LJ-H-01</a>	



# Linear Joint Seals - Intufoam

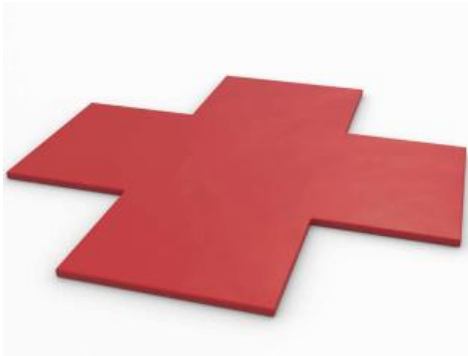
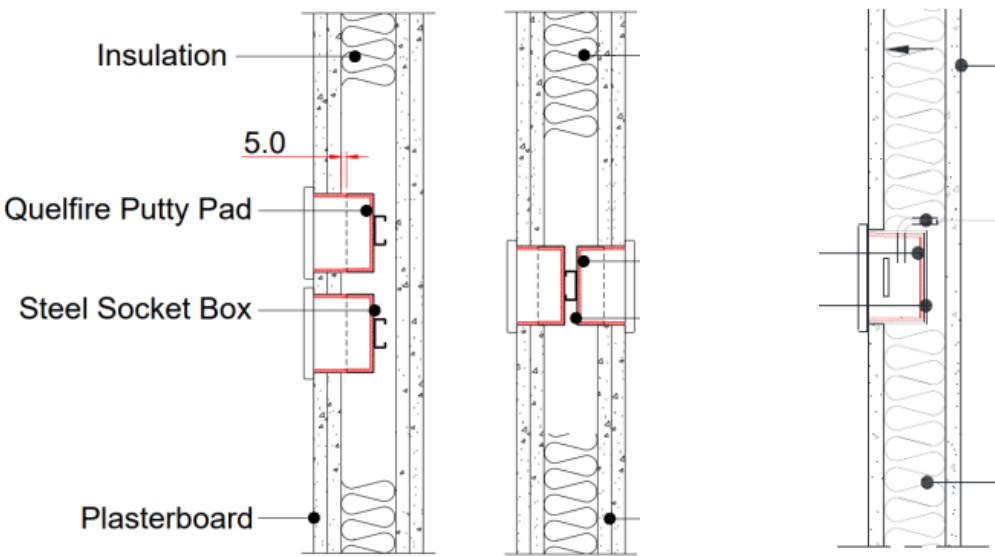
Type:	Minimum thickness	Standard Detail
Vertical joint in rigid wall	100mm	<a href="#">QI-LJ-V-01</a>
Horizontal floor joint	100mm	<a href="#">QI-LJ-H-02</a>
Horizontal floor joint	150mm	<a href="#">QI-LJ-H-01</a>
Head of rigid wall	100mm	<a href="#">QI-LJ-T-02</a>
Head of rigid wall	150mm	<a href="#">QI-LJ-T-01</a>
Head of wall batt detail – flexible or rigid wall to underside of concrete floor		
Letterbox batt with Intufoam	100mm	<a href="#">QB-FW100-D-HOW-03</a>
Pattress batt with Intufoam	100mm	<a href="#">QB-FW100-P-HOW-04</a>
Pattress batt with Intufoam	75mm	<a href="#">QB-FW75-P-HOW-04</a>



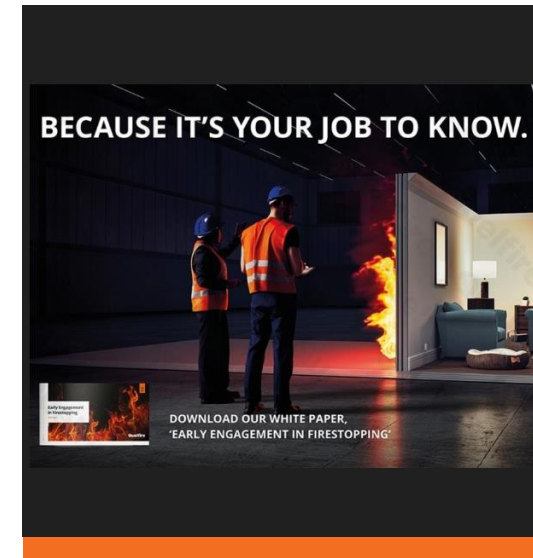


# Electrical Socket Boxes - Putty Pads

Service Penetration Type	Single Skin Plasterboard	Double Skin Plasterboard
Electrical Socket Box - Plastic	<a href="#">PP-FW75-02</a>	<a href="#">PP-FW100-02</a>
Electrical Socket Box - Metal	<a href="#">PP-FW75-01</a>	<a href="#">PP-FW100-01</a>
	<a href="#">PP-FW95-01</a>	<a href="#">PP-FW120-04</a>
		<a href="#">PP-FW130-01</a>
Media Panel - Metal	<a href="#">PP-FW75-03</a>	<a href="#">PP-FW100-03</a>
	<a href="#">PP-FW95-03</a>	<a href="#">PP-FW120-03</a>
		<a href="#">PP-FW130-03</a>
Electrical Socket Box in SpecWall	<a href="#">PP-SP75-01</a>	



**Quelfire**  
PROTECTING PEOPLE & PROPERTY



*Click on the relevant image above to go straight to the relevant section of standard details.*

# Installation Guides

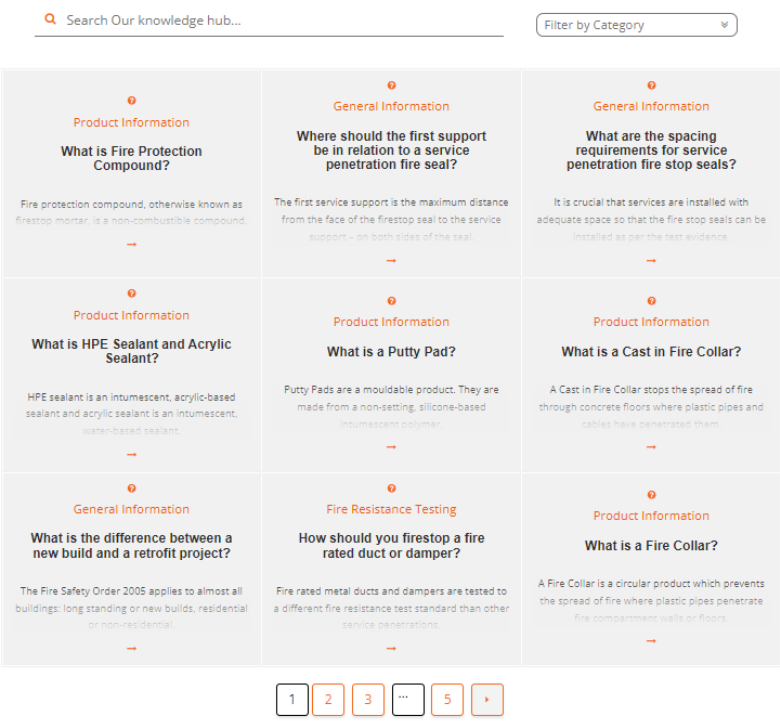
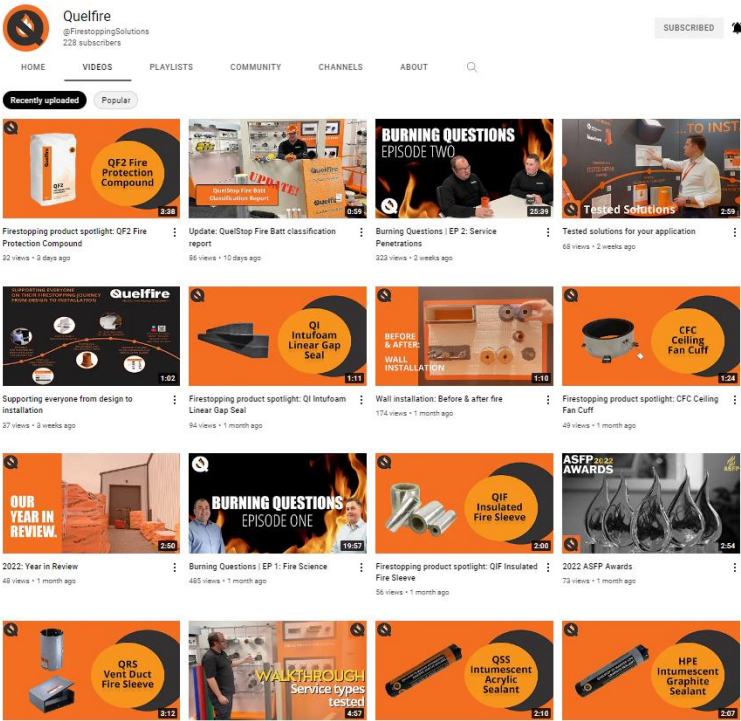
- [QRS Fire Sleeve](#)
- [QIF Insulated Fire Sleeve](#)
- [QWR Fire Collar](#)
- [QWW Intuwrap](#)
- [Putty Pad](#)
- [CFC Ceiling Fan Cuff](#)
- [QuelCast Cast In Fire Collar](#)
- [QuelCast - profiled deck](#)
- [QuelCast - hollow core slab](#)
- [QuelStop Fire Batt](#)
- [QuelStop Fire Batt – single side access](#)
- [QuelCoil Intuwrap](#)
- [QuelStop Intumescent Acrylic Sealant](#)
- [QuelStop HPE Graphite Sealant](#)
- [QF2 Fire Protection Compound](#)
- [Intufoam](#)
- **See also:**  
[www.quelfire.co.uk/downloads](http://www.quelfire.co.uk/downloads)

# Website resources



**Youtube** - <https://www.youtube.com/c/FirestoppingSolutions>

**Knowledge Hub** - [quelfire.co.uk/knowledge-advice/](http://quelfire.co.uk/knowledge-advice/)





# Download the Whitepaper



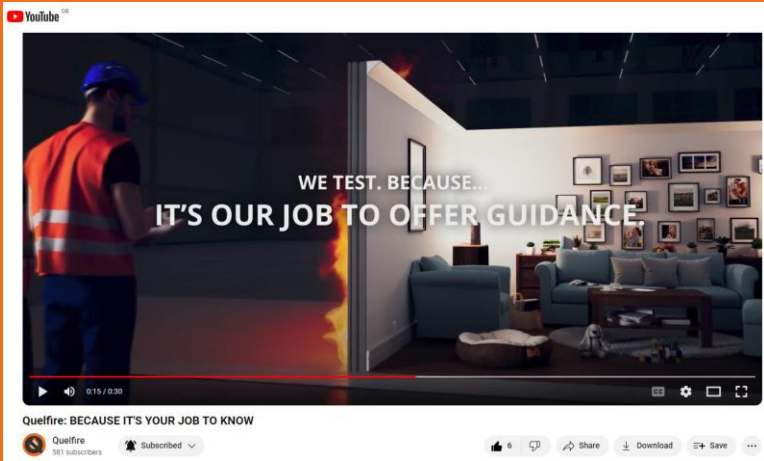
**WE TEST...**

Because evidence matters. Because it enables us to respond more quickly.  
Because offering transparency helps educate our customers.  
Because it's our job to inform best practice.  
Because it's our job to offer guidance. Because firestopping is complex.  
Because results are worth sharing.  
Because people matter.

**WE SHARE...**  
**BECAUSE IT'S YOUR JOB TO KNOW.**

Download our White Paper, 'Early Engagement in Firestopping'  
at [quelfire.co.uk/campaign](https://quelfire.co.uk/campaign)  
The sooner, the better.

Watch our campaign video:



# If in doubt, get in touch.....



technical@quelfire.co.uk




0161 928 7308



Send a web enquiry

Technical Enquiry  
Information Collection Form (ICF)



Help us to help you! Please provide as much relevant and specific detail of your project requirements so that we can provide specific and relevant tested solutions in return.  
Please click [here](#) to watch a video on how to use this ICF.  
A sketch of the scenario(s) may be useful, but the completed ICF is the priority.

Project name:

Contact name:

Contact organisation:

Please use multiple forms if required for multiple floor or wall types.

Substrate type\*:

Please select substrate type

Description / comments:

Example: 2 x 12.5mm fire rated plasterboard both sides of a 50mm stud, overall 100mm thickness

\*wall or floor specification and dimensions

Fire rating required:

E = integrity

Please select integrity required

I = insulation

Please select insulation required

Service type	Quelfire chooses / size of service excluding any pipe insulation (in millimetres)	Thickness of any insulation (in millimetres)	Single penetration (direct to wall seal)	Multi service penetration (fire batt seal)	Exposed, unprotected (burned & lined aperture)
Example: Insulated metal pipe	20mm	25mm	NO	YES	YES
Please select service type	mm	mm	Please select	Please select	Please select
Please select service type	mm	mm	Please select	Please select	Please select
Please select service type	mm	mm	Please select	Please select	Please select
Please select service type	mm	mm	Please select	Please select	Please select
Please select service type	mm	mm	Please select	Please select	Please select
Please select service type	mm	mm	Please select	Please select	Please select
Please select service type	mm	mm	Please select	Please select	Please select
Please select service type	mm	mm	Please select	Please select	Please select
Please select service type	mm	mm	Please select	Please select	Please select

Any additional comments:

By proceeding with the enquiry and submitting information for Quelfire to consider, it is deemed that you are accepting the relevant Terms and Conditions and understand the responsibility to verify yourself the accuracy and suitability of all information supplied.

1. Any information provided by or on behalf of Quelfire Limited is provided for general information only. It is not intended to amount to advice on which you should rely. You must obtain professional or specialist advice before acting, or relying on, any recommendation or advice.  
2. The summary is not exhaustive and does not constitute all issues relevant to the enquiry. It is limited to the information and time available to us. We have not verified any information supplied to you by you or any other source and cannot hold a physical inspection of any property. We make no representations, warranties or guarantees, whether express or implied, that any information is accurate or complete.  
3. We do not accept a duty of care to you or any other person in respect of the enquiry, nor do we accept any liability to you or any other person for any loss arising out of or in connection with the enquiry or any reply provided by us. Different limitations and exclusions of liability will apply to liability of Quelfire in respect of any products or services by us to you, and these will be set out in our terms and conditions of supply, a copy of which is available upon request. [Click here to read full Terms & Conditions of Sale](#)



Connect with us



<https://www.linkedin.com/company/quelfire>