

# QSS-LJ-H-M-01

# Horizontal Linear Joint – Concrete to Concrete (150mm or thicker)

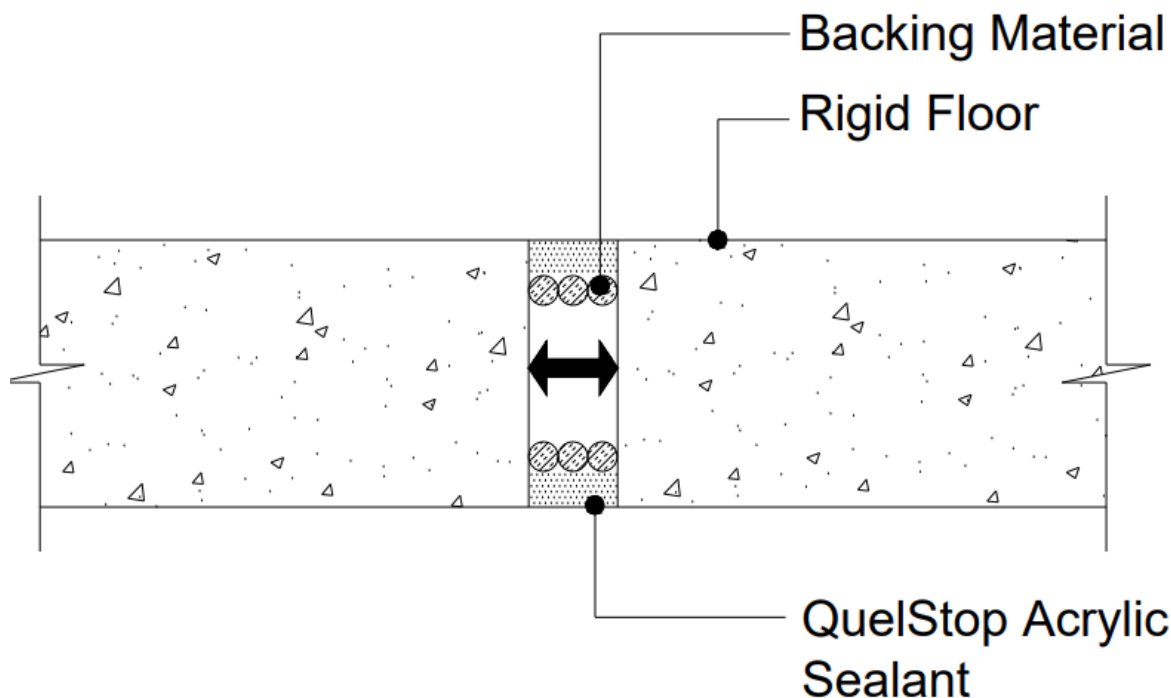


This standard detail is intended for general information only and all details should be checked against all relevant supporting test evidence, certification and installation guidelines. In line with the company's policy of continual development, details are subject to change and/ or withdrawal therefore you must ensure this is the latest published detail and instructions.

Additional Instructions	
Floors must have a minimum thickness of 150mm and comprise of concrete, aerated concrete or masonry, with a minimum density of $\geq 650\text{kg/m}^3$ .	
QuelStop Acrylic Sealant installed to <u>both</u> sides of the supporting construction.	

Quelfire Products Required	
Product Code	Description
QSS310	QuelStop Intumescent Acrylic Sealant

Test Condition	Designation
Integrity	E
Insulation	I
Horizontal Supporting Construction	H
Vertical Supporting Construction - Vertical	V
Vertical Supporting Construction - Horizontal	T
No Movement Capability	X
Movement Capability (%)	M00
Joint Width Range (mm)	W w1 to w2
Manufactured Splice	M
Field Splice	F
Manufactured and field Splice	B



To be read in conjunction with:	UL EU Certificate 01192-CPR, Page 22
Test standard:	BS EN1366-4 & EN13501-2
Substrate minimum thickness:	150mm
Drawing Scale:	Not to Scale
Issue Number:	2
Date of Issue:	January 2023
Detail Reference:	QSS-LJ-H-M-01

Substrate	Depth	Backing Material	Classification
Concrete - Concrete	20mm (Both Sides of the floor)	PE Backing Rod, glass wool, stone wool or ceramic wool	E 240 EI 60 - H - M17 - F - W 00 to 60

### Important Information:

- The supporting construction must be installed in accordance with the manufacturer's guidelines and must be capable of achieving the required fire rating of the firestop.
- All Services should be adequately supported either side of the firestop to ensure that no load is transferred onto the firestop seal.

### Scope and Liability:

- Any Information provided by or on behalf of Quelfire Limited is provided for general information only. It is not intended to amount to advice on which you should rely. You must obtain professional or specialist advice before taking, or refraining from, any recommendation or action.
- The summary is not exhaustive and does not consider all issues relevant to the enquiry. It is limited to the information and time available to us. We have not verified any information made available to us by you or any other source, nor have we carried out a physical inspection of any property. We make no representations, warranties or guarantees, whether expressed or implied, that any information is accurate, complete or up to date.
- We do not accept a duty of care to you or any other person in respect of the enquiry, nor do we accept any liability to you or any other person for any loss arising out of or in connection with the enquiry or any reply provided by us. Different limitations and exclusions of liability arising as a result of the supply of any products or services by us to you, and these will be set out in our terms and conditions of supply, a copy of which is available on request.
- Full terms and conditions of sale are available at <https://www.quelfire.co.uk/terms-conditions-of-sale/>