

PP-FW100-03

Metal Media Panel in a flexible wall (100mm or thicker)

This standard detail is intended for general information only and all details should be checked against all relevant supporting test evidence, certification and installation guides. In line with the Company's policy of continual development, details are subject to change. Care should be taken to ensure this is the latest published detail and instructions.

Additional Instructions

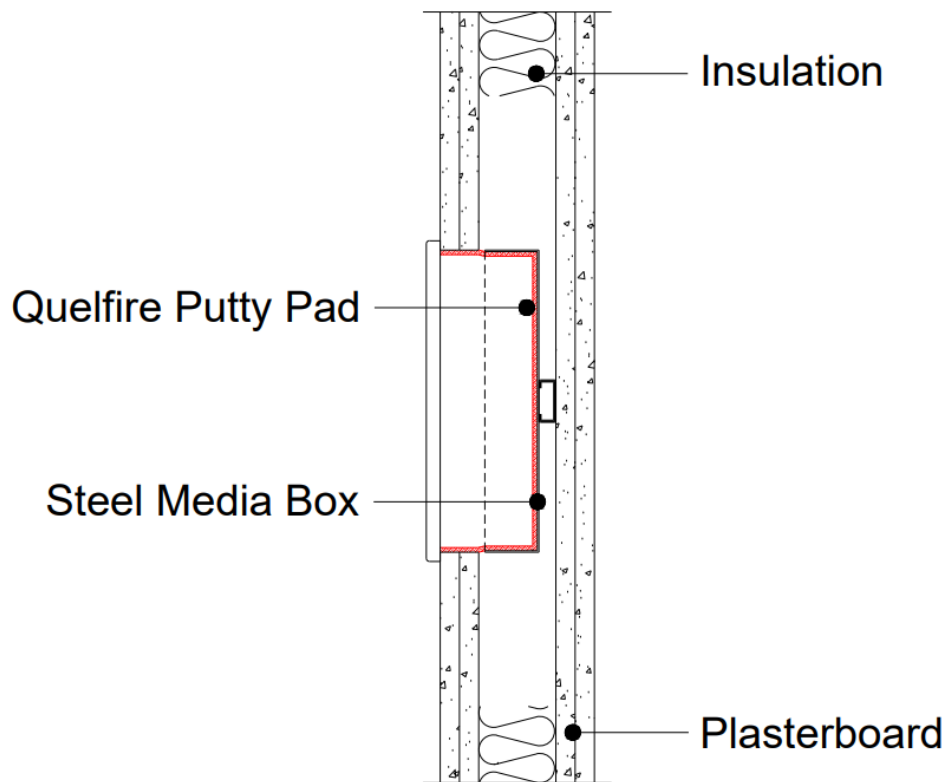
Flexible walls (Insulated or Uninsulated) to have a minimum 50mm wide metal or timber stud and minimum 2no. layer of 12.5mm Gypsum boards in accordance with EN 520 or Calcium Silicate boards which are CE Marked based on an ETA on both sides of the stud. For timber stud walls there shall be a minimum distance of 100mm from the penetration seal to any timber stud and the void between the stud and seal shall be filled with a minimum 100mm depth of Class A1 or A2 insulation.

The Metal Multimedia Panel should be installed in accordance with manufacturer's recommendations and secured to a proprietary support system.

Metal media panels with a depth $\leq 35\text{mm}$ are suitable, and steel extension frames can be used to extend the metal media panel to the front face of the wall, as long as the overall depth is no greater than 65mm from the front face of the plasterboard wall.

A gap $\leq 5\text{mm}$ between the electrical socket box and back of the fire rated plasterboard is tolerable. PVA glue is used on the exposed raw edges of the plasterboard layers before fitting the Quelfire Intumescent Acoustic Putty Pad. The Quelfire Intumescent Acoustic Putty Pad is extended (using additional material/offcuts) to sit flush with the front face of the plasterboard wall ensuring a $\geq 3\text{mm}$ thickness is maintained.

Follow the installation steps referenced in the [Quelfire Putty Pad Installation Instructions](#) guidance document.




Quelfire Products Required	
Product Code	Description
PUTPAD-S	Single Putty Pad
PUTPAD-D	Double Putty Pad

Socket Type	Page No.
Metal Caddy	1
Box Strap	2

***** Different media panels**

This detail is specifically tested with the specification listed in the table below. Quelfire cannot comment specifically on other media panels and combinations, we recommend speaking to a qualified fire engineer for other situations.

Service Type	Service Size**	Aperture Size	Wall Positions	Minimum distance between multiple sockets on same side	Classification
DB184 Metal Media Back Box with Deta S1987 Plastic Cover Plate *** 	$\leq 252\text{mm}$ high $\leq 192\text{mm}$ wide $\leq 40\text{mm}$ deep	255mm wide 196mm high	Offset	100mm	E120 EI 90

**As per BS EN 1366-3:2021 section 13.6.3 service can be circular shape equal to or less than the area tested.

To be read in conjunction with:	UL-EU-01308-EN Issue 2 pages 13,14 & 17
Test & Classification standard:	BS EN1366-3 & EN13501-2
Substrate minimum thickness:	100mm
Drawing Scale:	Not to Scale
Issue Number:	3
Date of Issue:	October 2024
Detail Reference:	PP-FW100-03

Important Information:

- The supporting construction must be installed in accordance with the manufacturer's guidelines and must be capable of achieving the required fire rating of the firestop.
- All Services should be adequately supported either side of the firestop to ensure that no load is transferred onto the firestop seal.

Scope and Liability:

- Any Information provided by or on behalf of Quelfire Limited is provided for general information only. It is not intended to amount to advice on which you should rely. You must obtain professional or specialist advice before taking, or refraining from, any recommendation or action.
- The summary is not exhaustive and does not consider all issues relevant to the enquiry. It is limited to the information and time available to us. We have not verified any information made available to us by you or any other source, nor have we carried out a physical inspection of any property. We make no representations, warranties or guarantees, whether expressed or implied, that any information is accurate, complete or up to date.
- We do not accept a duty of care to you or any other person in respect of the enquiry, nor do we accept any liability to you or any other person for any loss arising out of or in connection with the enquiry or any reply provided by us. Different limitations and exclusions of liability arising as a result of the supply of any products or services by us to you, and these will be set out in our terms and conditions of supply, a copy of which is available on request.
- Full terms and conditions of sale are available at <https://www.quelfire.co.uk/terms-conditions-of-sale/>

This standard detail is intended for general information only and all details should be checked against all relevant supporting test evidence, certification and installation guides. In line with the Company's policy of continual development, details are subject to change. Care should be taken to ensure this is the latest published detail and instructions.

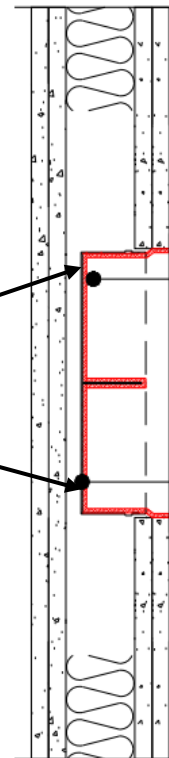
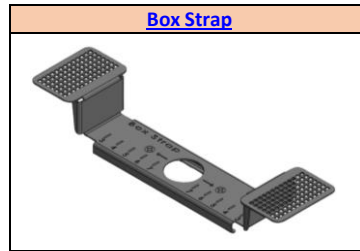
Additional Instructions

Flexible walls (Insulated or Uninsulated) to have a minimum 50mm wide metal or timber stud and minimum 2no. layer of 12.5mm Gypsum boards in accordance with EN 520 or Calcium Silicate boards which are CE Marked based on an ETA on both sides of the stud. For timber stud walls there shall be a minimum distance of 100mm from the penetration seal to any timber stud and the void between the stud and seal shall be filled with a minimum 100mm depth of Class A1 or A2 insulation.

The metal media panels are installed in accordance with manufacturers recommendations and secured to the Plasterboard using 2no. **Box Strap System** fixed diagonally in opposite corners of the media panel, using 60mm long x 3.5mm diameter jack-point screws. 1no. 12.5mm thick section of plasterboard 50x50mm is positioned between each fixing plate of the **Box Strap System** and plasterboard wall lining on the inside of the partition.

Metal media panels with a depth ≤ 47 mm are suitable.

Follow the installation steps referenced in the [Quelfire Putty Pad Installation Instructions](#) guidance document.



Quelfire Putty Pad

Plastic/Metal Media Panel

Steel Media Box

Quelfire Products Required	
Product Code	Description
PUTPAD-S	Single Putty Pad
PUTPAD-D	Double Putty Pad
Socket Type	Page No.
Metal Caddy	1
Box Strap	2

***** Different media panels**

This detail is specifically tested with the specification listed in the table below. Quelfire cannot comment specifically on other media panels and combinations, we recommend speaking to a qualified fire engineer for other situations.

Service Type	Service Size**	Aperture Size	Wall Positions	Minimum distance between multiple sockets on same side	Fire Rating
MP525 Metal Media Back bBox with CMA606 Plastic Media Cover	≤ 222 mm high ≤ 192 mm wide ≤ 47 mm deep	225mm wide 195mm high	Offset	100mm	EI 90
MP525 Metal Media Back Box with MP606SCBK Metal Media Cover	≤ 222 mm high ≤ 192 mm wide ≤ 47 mm deep	225mm wide 195mm high	Offset	100mm	E 120 EI 90

**As per BS EN 1366-3:2021 section 13.6.3, services can be a circular shape equal to or less than the area tested.

****** Test Evidence**

This detail will be included in a future update of the Quelfire Putty Pad Classification Report. The fire test report detailed is not for general distribution but can be requested by the projects qualified fire consultant / engineer by contacting the Quelfire Technical Team directly.

To be read in conjunction with:	WF 542145/R Specimens C1,C2,D1 & D2****
Test standard:	BS EN1366-3
Substrate minimum thickness:	100mm
Drawing Scale:	Not to Scale
Issue Number:	3
Date of Issue:	October 2024
Detail Reference:	PP-FW100-03

Important Information:

- The supporting construction must be installed in accordance with the manufacturer's guidelines and must be capable of achieving the required fire rating of the firestop.
- All Services should be adequately supported either side of the firestop to ensure that no load is transferred onto the firestop seal.

Scope and Liability:

- Any Information provided by or on behalf of Quelfire Limited is provided for general information only. It is not intended to amount to advice on which you should rely. You must obtain professional or specialist advice before taking, or refraining from, any recommendation or action.
- The summary is not exhaustive and does not consider all issues relevant to the enquiry. It is limited to the information and time available to us. We have not verified any information made available to us by you or any other source, nor have we carried out a physical inspection of any property. We make no representations, warranties or guarantees, whether expressed or implied, that any information is accurate, complete or up to date.
- We do not accept a duty of care to you or any other person in respect of the enquiry, nor do we accept any liability to you or any other person for any loss arising out of or in connection with the enquiry or any reply provided by us. Different limitations and exclusions of liability arising as a result of the supply of any products or services by us to you, and these will be set out in our terms and conditions of supply, a copy of which is available on request.
- Full terms and conditions of sale are available at <https://www.quelfire.co.uk/terms-conditions-of-sale/>