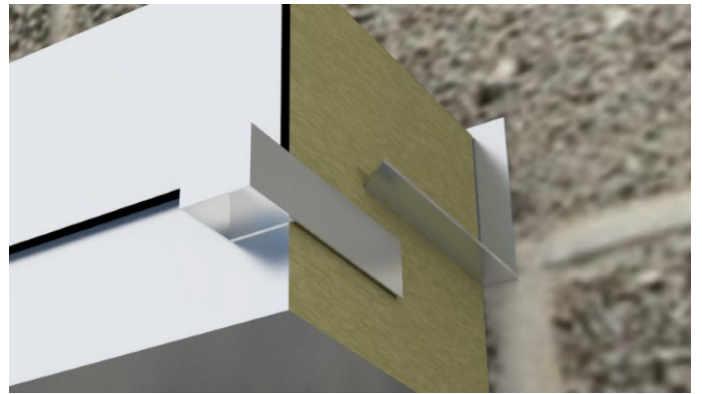
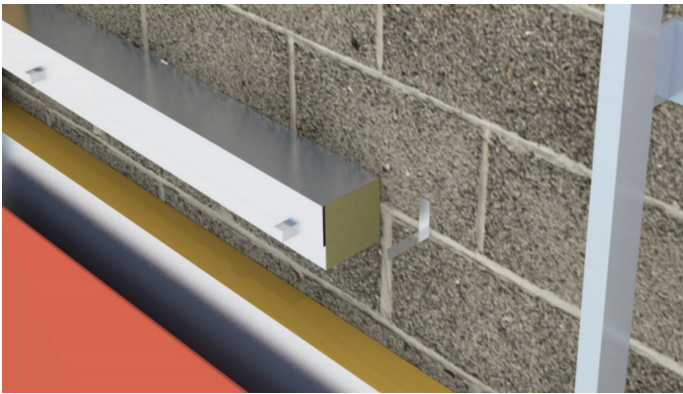


Cavity fire barrier for rainscreen cladding applications. Maintaining a ventilated cavity.



FEATURES & BENEFITS

- Up to 2 hours fire rating
- Tested in accordance with BS EN 1363-1: 1999
- Provides a 25mm airspace behind rainscreen cladding
- Foil faced to provide a smoke barrier
- Available to suit cavity widths from 75mm to 300mm

REGULATIONS

Quelfire Rainscreen Barrier has been fire tested at Chiltern International Fire, achieving up to two hours fire integrity when fitted between blockwork and rainscreen cladding. Tests were carried out in accordance with BS EN 1363-1:1999.

COMPOSITION

Quelfire Rainscreen Barrier is manufactured using rockfibre mineral wool which achieves a fire classification of Euroclass A1 as defined in BS EN 13501-1, and conforms to BS EN 13162 and EN16001 Energy Management Systems. Quelfire's rockfibre mineral wool insulation has a thermal conductivity of 0.035W/mK.

Quelfire Rainscreen Barriers are supplied in polythene packs which are designed for transporting and protecting the products. It is not recommended that the packs are stored in direct sunlight. When storing the barriers for longer periods of time it is recommended that the product should be stored indoors, or under cover.

No CFCs or HCFCs are involved in the manufacturing process of Quelfire's rockfibre mineral wool insulation. The material presents no known threat to the environment and is classed as ODP and GWP zero. Quelfire's Rainscreen Barrier has a Green Guide rating of A+.

DURABILITY

Quelfire Rainscreen Barrier is expected to last the lifetime of the building.

APPLICATION / INSTALLATION

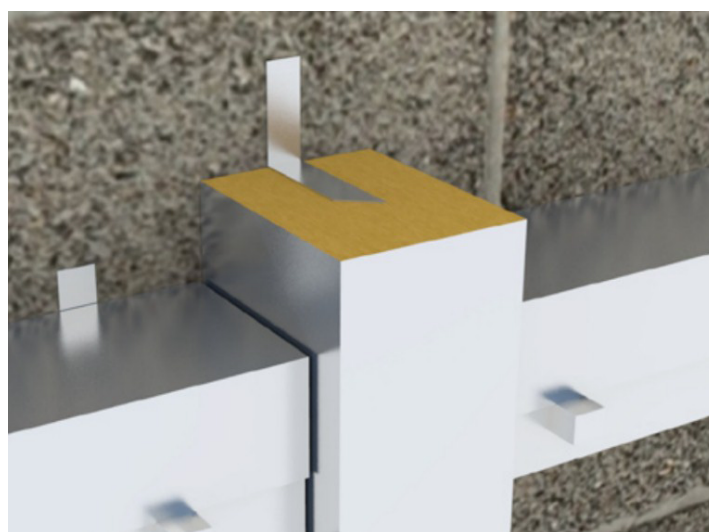
Quelfire Rainscreen Barrier has been designed to provide a two hour fire rating where continuous vertical airflow is required behind a rainscreen cladding system.

The Quelfire Fixing Spike is fitted to the external surface of the inner blockwork, onto which the Quelfire Rainscreen Barrier is then impaled. A Quelfire Spacer Spike is fitted to the external surface of the Rainscreen Barrier below the intumescent strip. The Spacer Spike ensures the 25mm airspace is maintained along the length of the fire break.

QUELFIRE QVB RAINSCREEN BARRIER

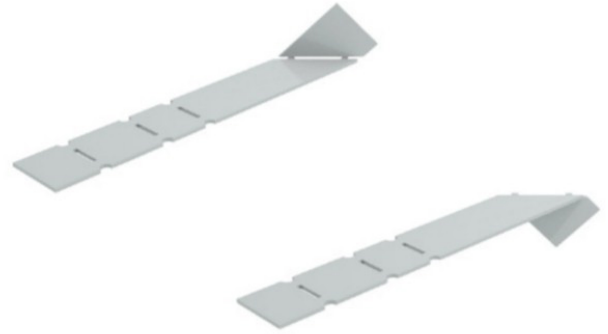
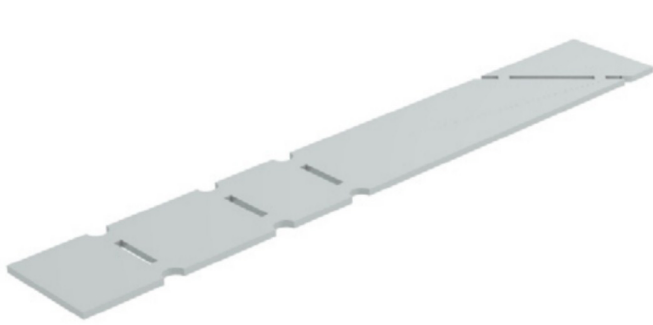
Product Code	Suitable for Cavity Width	Dimensions	Fire Rating
QVB75	75mm	50 x 100 x 1200mm	2 hours
QVB85	85mm	60 x 100 x 1200mm	2 hours
QVB100	100mm	75 x 100 x 1200mm	2 hours
QVB125	125mm	100 x 100 x 1200mm	2 hours
QVB150	150mm	125 x 100 x 1200mm	2 hours
QVB175	175mm	150 x 100 x 1200mm	2 hours
QVB200	200mm	175 x 100 x 1200mm	2 hours
QVB225	225mm	200 x 100 x 1200mm	2 hours
QVB250	250mm	225 x 100 x 1200mm	2 hours
QVB275	275mm	250 x 100 x 1200mm	2 hours
QVB300	300mm	275 x 100 x 1200mm	2 hours

Can't find your size? Quelfire Rainscreen Barrier can be manufactured to suit any cavity width between 75 and 300mm. Contact us for more information.



Quelfire Rainscreen Barrier can be used in conjunction with Quelfire Fire Stop Slab vertically. Vertical barriers fully fill the cavity while horizontal Rainscreen Barriers provide a fixed 25mm airspace. The provided Quelfire Spacer Spikes ensure the correct airspace is maintained during fitting.

SPACER SPIKE FITTING INSTRUCTIONS



1. The Quelfire Spacer Spike has been developed to provide a consistent 25mm breathing space between rainscreen cladding and the Quelfire Rainscreen Barrier.

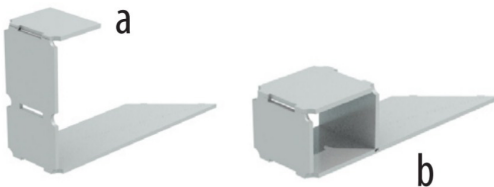
2. Simply bend the spike back and forth at the break-off point.



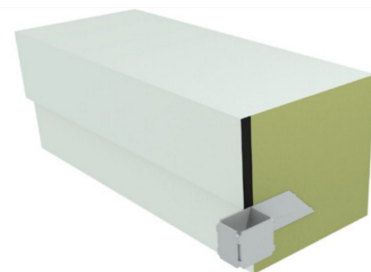
3. The spike will break and the unused part which has been removed can now be discarded.



4. Now bend the spike into an 'L' shape at the first bend point.



5. (a) Now bend the spike into a 'U' shape at the third bend point. Then complete the spike by bending at the second bend point as shown. (b)



6. Push the Spacer Spike into the Rainscreen Barrier so that it tucks in underneath the intumescent strip. The external cladding should butt up to the Space Spike providing the required breathing space.

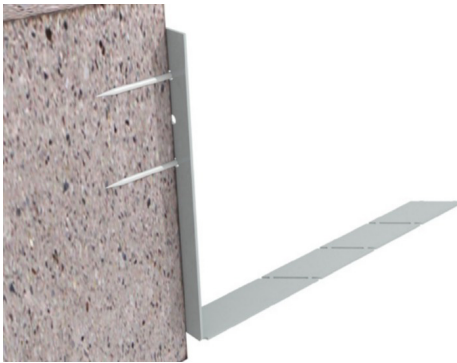
FIXING SPIKE FITTING INSTRUCTIONS



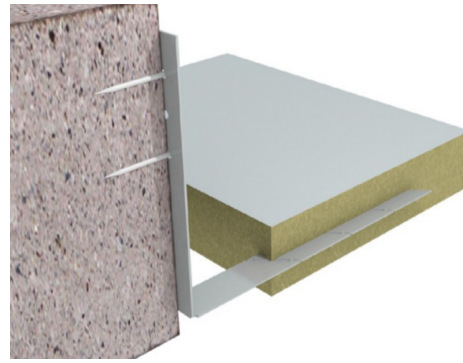
1. Two spikes are available: small for up to 160mm cavity and large for sizes above this



2. Now bend the spike into an 'L' shape at the fold point (a small 'U' shape cutout on each side).



3. Once folded the spike can be fixed to the block or slab, either to the top or face. It is recommended to use at least two fixing points to ensure strength.



4. Now impale the insulation onto the spike as can be seen in this cross-section. Please note two spikes should be used for each piece, approx. 150mm inwards from each end.

TECHNICAL SUPPORT & GUIDANCE

Should you require any further information regarding this product, please don't hesitate to contact Quelfire Ltd

Quelfire maintain a policy of constant improvement and reserve the right to alter or amend the specifications of their products without notice. Quelfire is a Registered Trademark.

WARRANTY The Company warrants its products to be free from defects in material and workmanship for a period of 12 months from the date of delivery. The Company's obligation under this warranty is limited, as its option, to the repair or replacement, free of charge, or refund of the net Invoiced price of any part found to be defective, and which, in the Company's opinion, has not been subject to undue wear and tear, accident, alteration, abuse or misuse. Consequent damages are expressly disclaimed. Technical advice from Quelfire whether verbal, in writing or by way of trials, is given in good faith but without warranty. The application, use and installation of the Company's products are beyond the control of the Company, and the purchaser is solely responsible that goods are fit for any particular purpose. In line with the Company's policy of continual research and development, product specifications and availability are subject to change or withdrawal without prior notice.